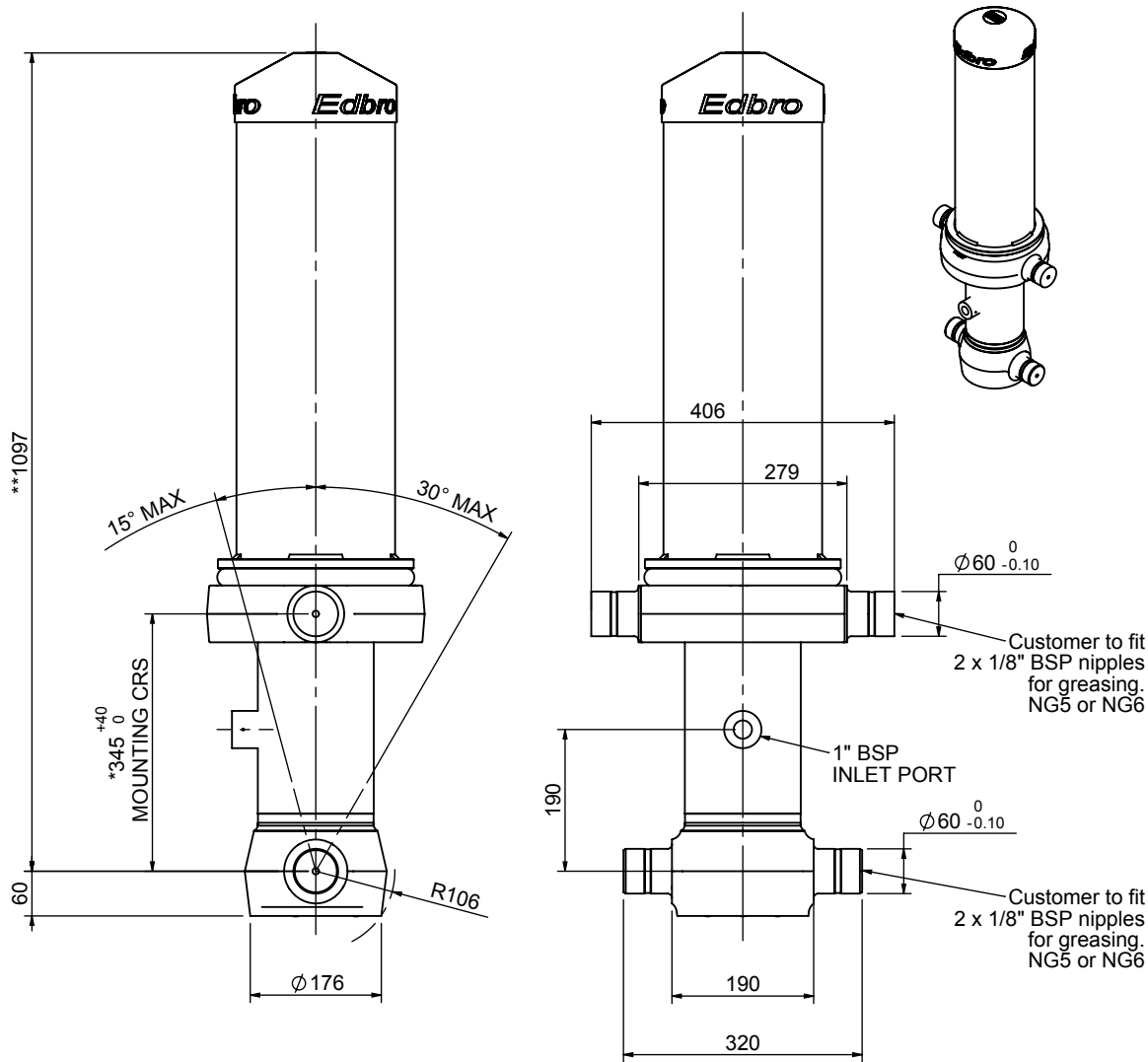


# Cylinder 5 stage front end with outer cover

**\*\*ALLOW 50mm TO REMOVE CAP FOR SERVICING**

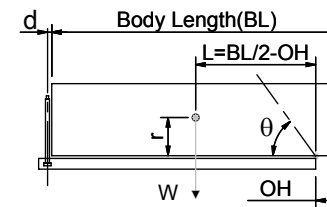


**\*Includes 14mm Pull Out.  
All Stages Chrome Plated**

# CS130054068B19A11C

SPECIFICATION		TIPPING CAPACITY : 17-28 TONNES***		
Stage	Diameter	Length	Stroke	Swept Volume
OUTER COVER	213	710	-	-
0	155	1025	-	-
1	136	990	783	11
2	117	990	812	9
3	98	990	817	6
4	79	990	822	4
5	63	990	827	3
Total (+5/-10)			4061	33
Final stroke reduced by	0	Priming Volume		9
Cylinder Mass (Kg)	144	Total Volume (Litres)		42
Maximum Pressure (Bar)	190	Max. first stage thrust		170 KN

## \*\*\*TIPPING CAPACITY AT WORKING PRESSURE



BODY LENGTH (BL)						OH
5000	5250	5500				
20	48°	18	46°	17	43°	150
24	51°	20	49°	20	46°	450
		28	52°	25	49°	750

$d = 178$ ;  $r = 750$ ; Working Pressure 175 bar

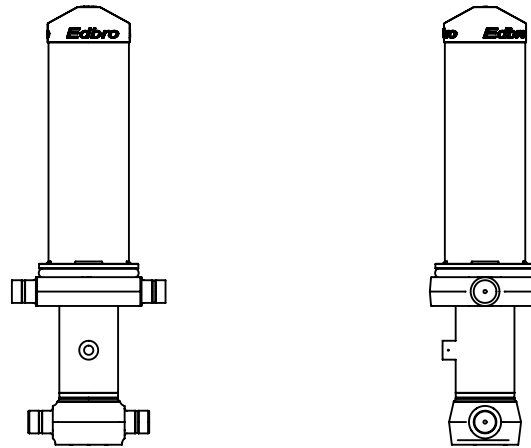
### For guidance only;

Higher working pressures and tipping capacities may be possible.

To check your application email - [applications@edbro.co.uk](mailto:applications@edbro.co.uk)

## NOTES

1. This cylinder is for lifting purposes only and side load conditions should be avoided
2. Cylinder is painted in primer paint to RAL5013
3. Refer to [www.edbro.com](http://www.edbro.com) for:-
  - Bracket details
  - Installation instructions that must be observed
  - Correct oil selection
  - An explanation of tipping capacity



CS130054068B19A11C