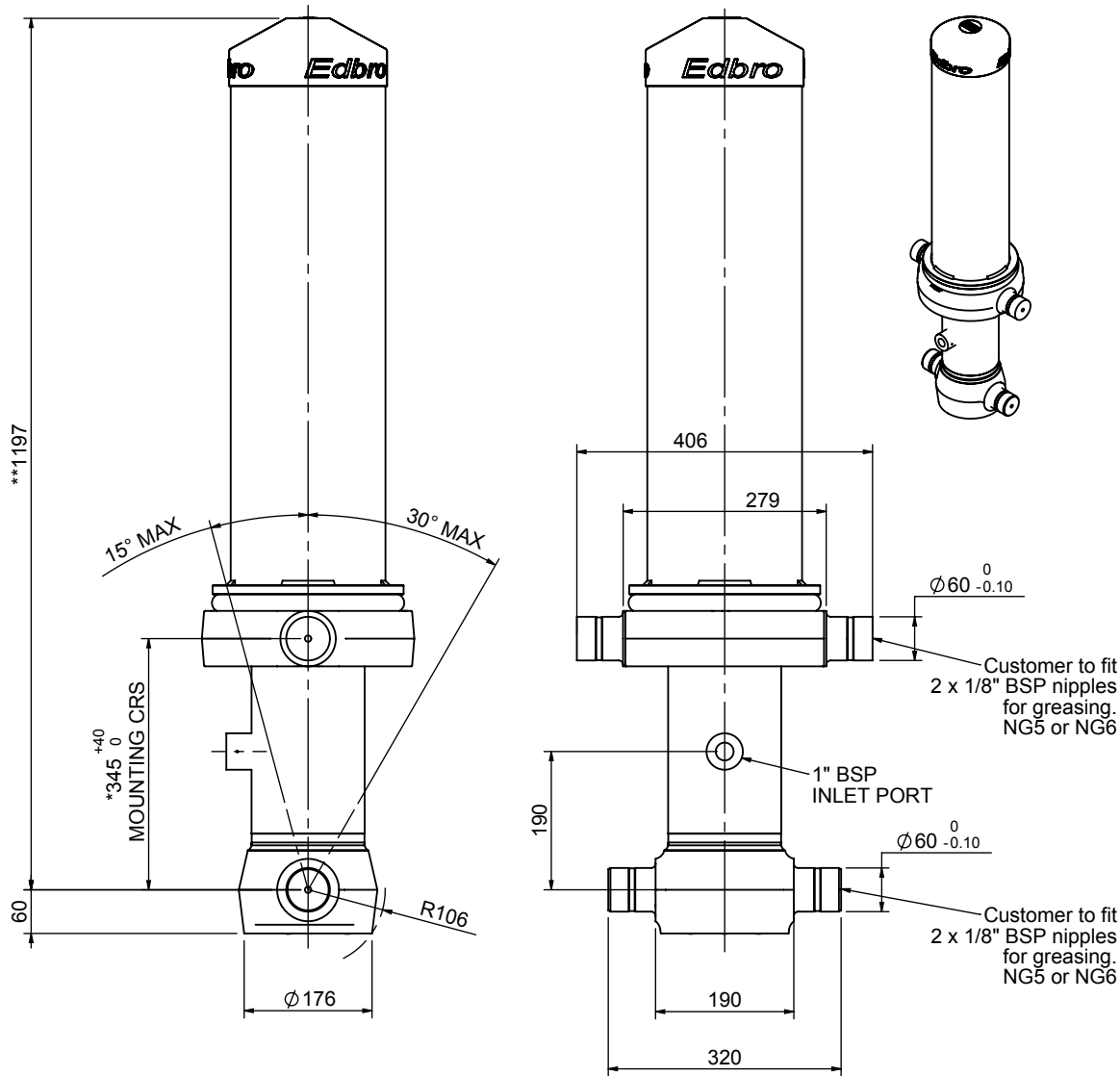


# Cylinder 5 stage front end with outer cover

**\*\*ALLOW 50mm TO REMOVE CAP FOR SERVICING**

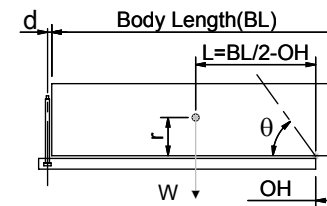


**\*Includes 14mm Pull Out. All Stages Chrome Plated**

# CS130054568B19A11C

SPECIFICATION		TIPPING CAPACITY : 17-25 TONNES***		
Stage	Diameter	Length	Stroke	Swept Volume
OUTER COVER	213	810	-	-
0	155	1125	-	-
1	136	1090	883	13
2	117	1090	912	10
3	98	1090	917	7
4	79	1090	922	5
5	63	1090	927	3
Total (+5/-10)			4561	38
Final stroke reduced by	0	Priming Volume		9
Cylinder Mass (Kg)	154	Total Volume (Litres)		47
Maximum Pressure (Bar)	190	Max. first stage thrust		170 KN

## \*\*\*TIPPING CAPACITY AT WORKING PRESSURE



BODY LENGTH (BL)						OH
5600	5850	6100				
19	48°	18	46°	17	44°	150
22	51°	20	49°	19	46°	450
		25	52°	23	49°	750

$d = 178$ ;  $r = 750$ ; Working Pressure 175 bar

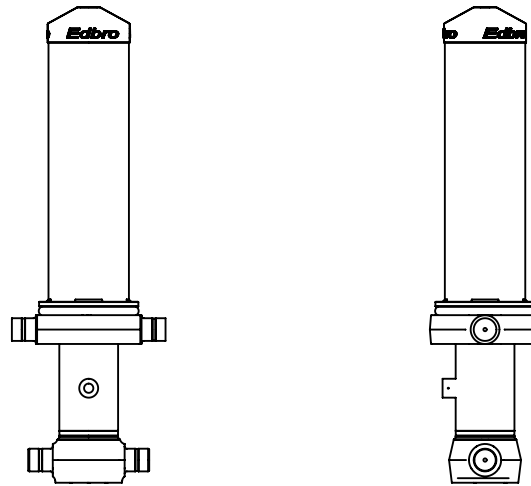
### For guidance only;

Higher working pressures and tipping capacities may be possible.

To check your application email - [applications@edbro.co.uk](mailto:applications@edbro.co.uk)

## NOTES

- This cylinder is for lifting purposes only and side load conditions should be avoided
- Cylinder is painted in primer paint to RAL5013
- Refer to [www.edbro.com](http://www.edbro.com) for:-
  - Bracket details
  - Installation instructions that must be observed
  - Correct oil selection
  - An explanation of tipping capacity



CS130054568B19A11C