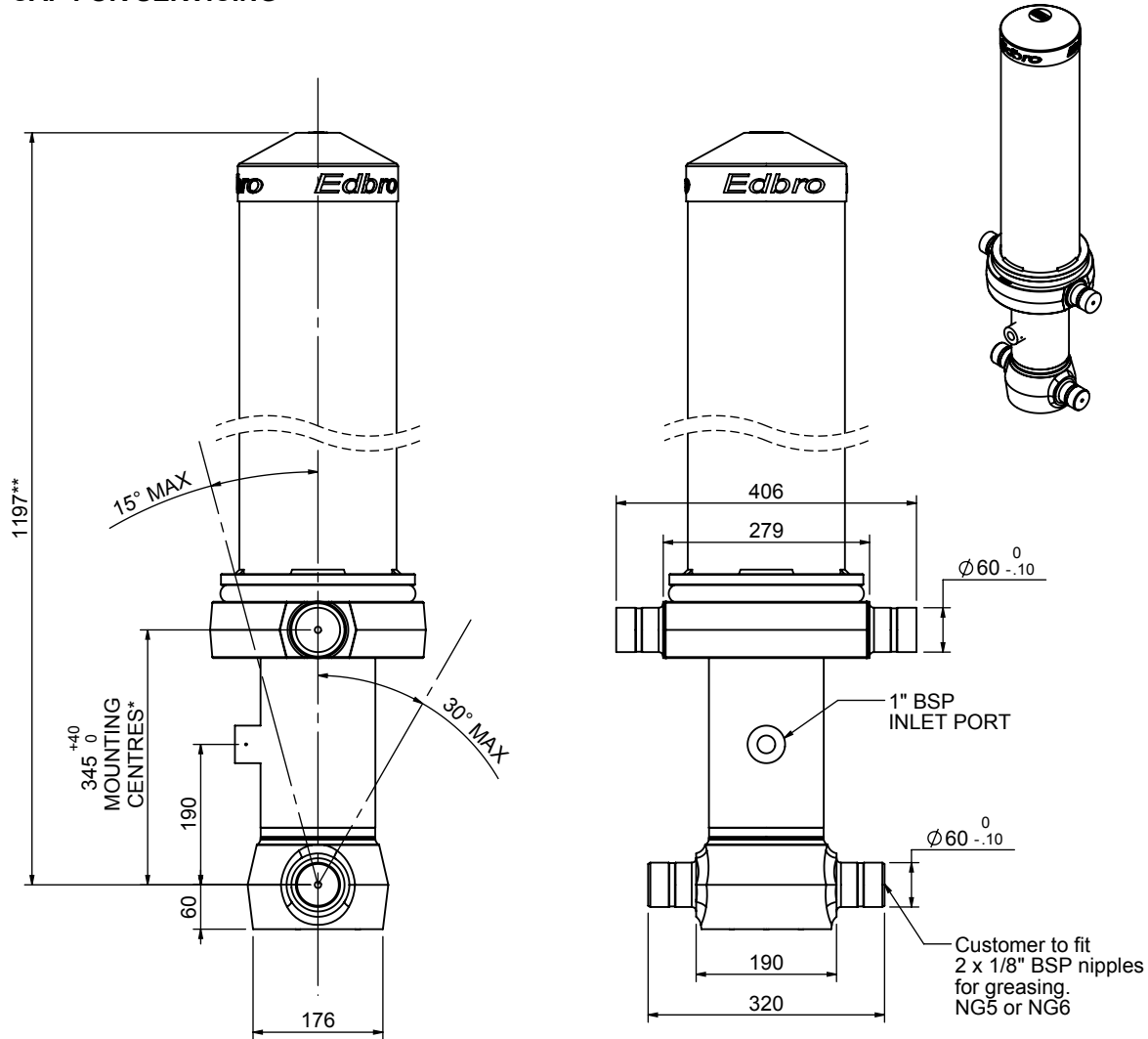


Cylinder 5 stage front end with Outer Cover

****ALLOW 50mm TO REMOVE CAP FOR SERVICING**

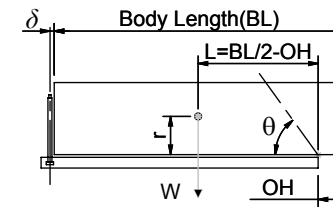


CS130054568B19A11C

SPECIFICATION		RATED CAPACITY : 17-26 TONNES***		
Stage	Diameter	Length	Stroke	Swept Volume
OUTER COVER	213	800	-	-
0	136	1125	-	-
1	136	1090	887	13
2	117	1090	912	10
3	98	1090	917	7
4	79	1090	922	5
5	63	1090	927	3
Final stroke reduced by	0	Total (+5/-10)	4565	38
Cylinder Mass (Kg)	154.00	Priming Volume	8.5	
Rated Pressure (Bar)	175	Total Volume (Litres)	46.5	
Maximum Pressure (Bar)	175	Max. first stage thrust	170 KN	

***TIPPING CAPACITY AT RATED PRESSURE

d = 178 ; r = 750



BODY LENGTH (BL)						OH
5750		6000		6250		
18	47°	17	45°	17	43°	150
21	50°	20	47°	19	45°	450
26	53°	23	50°	22	48°	750

For guidance only;

Higher Rated Pressures may be possible. To check your application, email Edbro plc at <applications@edbro.co.uk>

NOTES

- If hydraulic pressure is used to limit overloading, the system relief valve must be set to the Rated Pressure unless agreed otherwise by Edbro
- The system relief valve can be set to Maximum Pressure if the load is limited by other means. See RATINGS page for advice
- This cylinder is for lifting purposes only and sload conditions must be avoided
- Cylinder is painted in primer paint to RAL5013
- See bracket options page BRKT01, BRKT02
- See installation instructions INSTALL01
- Use oil according to specification OIL01

***Include 10mm Pull Out
All Stages Chrome Plated**



Edbro plc
Nelson Street, Bolton, Lancashire BL3 2JJ UK
Tel +44 (0) 1204 528888 Fax +44 (0) 1204 531957
Email: postmaster@edbro.com Web: www.edbro.com

Technical Specifications are subject to change without notice
Date Created/Updated: 23 December 2009 08:18:23
Refer www.edbro.com to confirm latest specification
All dimensions are in 'mm', unless otherwise stated