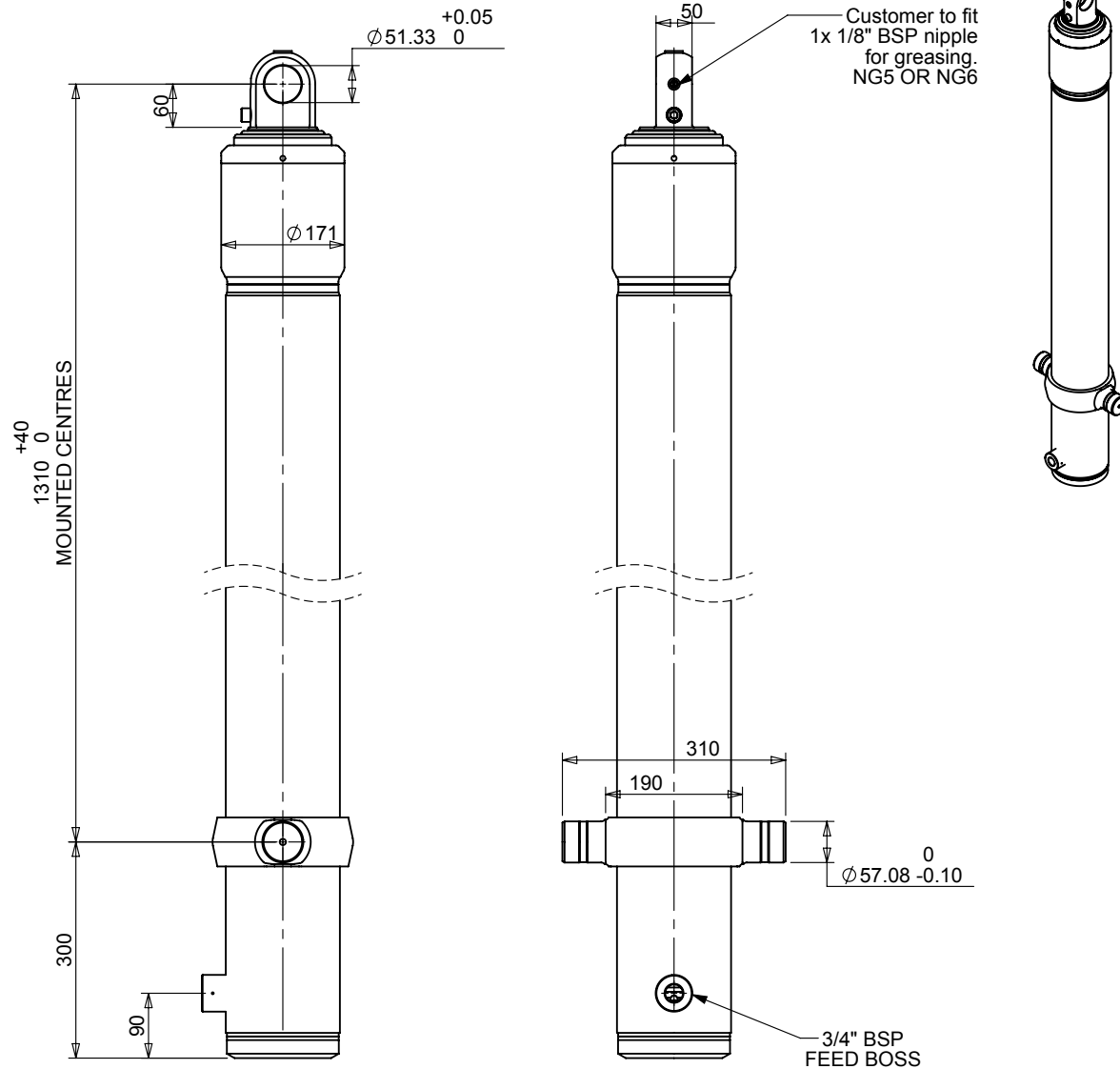


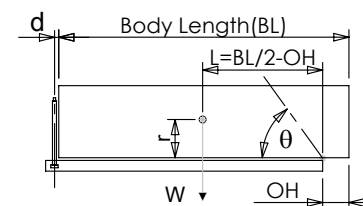
Cylinder 3 stage front end with plain eye



CS130E303919A487

SPECIFICATION		TIPPING CAPACITY : SEE BELOW***		
Stage	Diameter	Length	Stroke	Swept Volume
-	-	-	-	
-	-	-	-	
-	-	-	-	
0	158	1500	-	-
1	136	1490	1290	19
2	117	1490	1312	14
3	98	1490	1317	10
Total (+5/-10)			3919	43
Final stroke reduced by	0	Priming Volume		12.8
Cylinder Mass (kg)	126	Total Volume (Litres)		55.8
Maximum Pressure (Bar)	200	Max. first stage thrust		225 kN

***TIPPING CAPACITY AT WORKING PRESSURE



BODY LENGTH (BL)						OH
8500		9000		9500		
51	50°	48	47°	46	44°	150
55	52°	52	49°	49	46°	450
61	54°	56	51°	53	48°	750

$d = 0$; $r = 900$; Working Pressure 200 bar

For guidance only;

Higher working pressures and tipping capacities may be possible.

To check your application email - applications@edbro.co.uk

NOTES

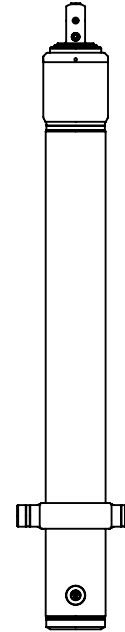
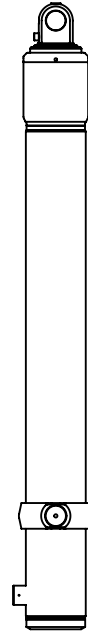
1. This cylinder is for lifting purposes only and side load conditions should be avoided
2. Cylinder is painted in primer paint to RAL5013
3. Refer to www.edbro.com for;-
 - Bracket details
 - Installation instructions that must be observed
 - Correct oil selection
 - An explanation of tipping capacity

*Includes 10mm Pull Out. All Stages Chrome Plated



JOST UK Ltd
 Edbro House, Nelson Street, Bolton, England, BL3 2JJ
 Tel +44 (0) 1204 528888 Fax +44 (0) 1204 531957
 Email: sales@edbro.com Web: www.edbro.com

Technical Specifications are subject to change without notice
 Date Created/Updated: 01 April 2016
 Refer www.edbro.com to confirm latest specification
 All dimensions are in 'mm', unless otherwise stated



CS130E303919A487