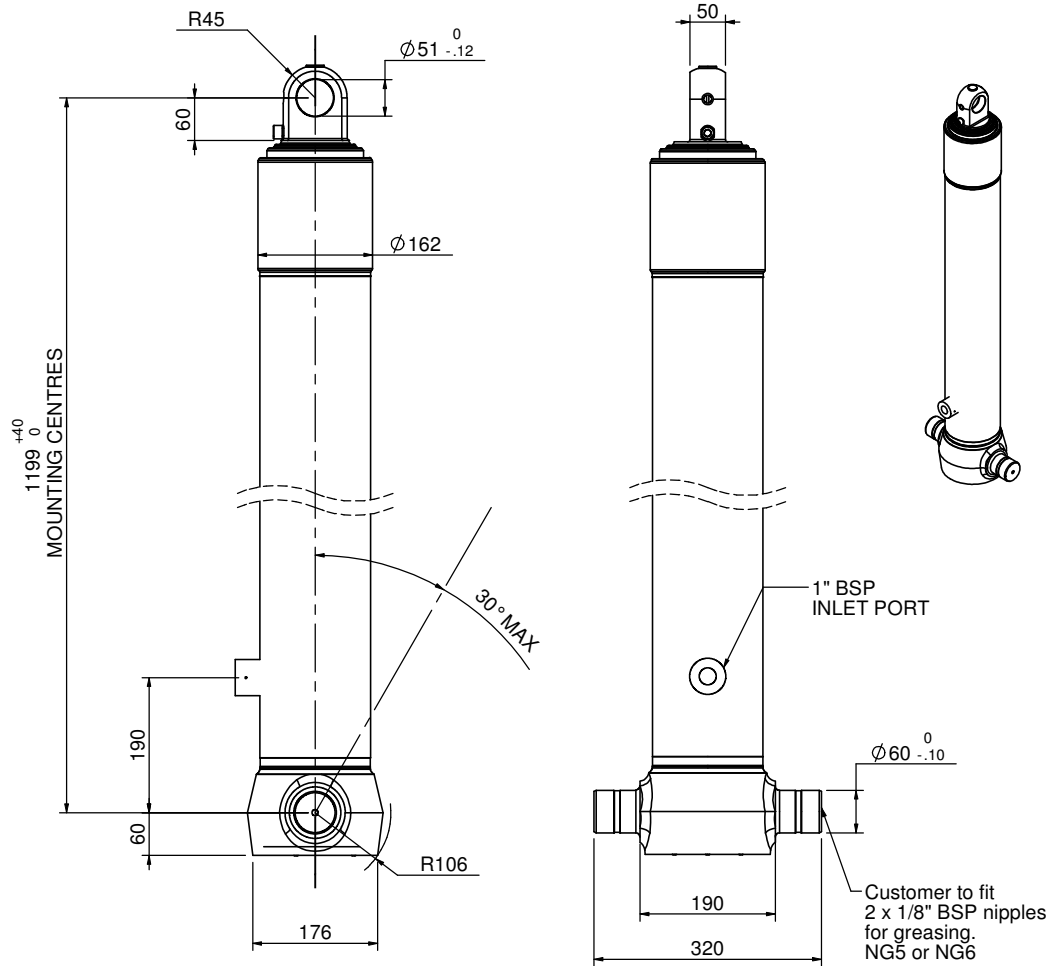


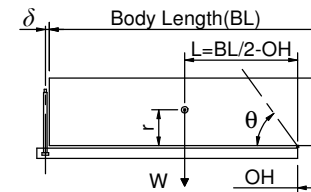
Cylinder 3 stage front end with plain eye

CS130E32869B19A01



Stage	Diameter	Length	Stroke	Swept Volume
-	-	-	-	-
-	-	-	-	-
-	-	-	-	-
0	155	1175	-	-
1	136	1140	938	14
2	117	1140	962	10
3	98	1140	967	7
Final stroke reduced by	0	Total (+5/-10)	2867	31
Cylinder Mass (Kg)	99.42	Priming Volume		10.7
Rated Pressure (Bar)	135	Total Volume (Litres)		41.7
Maximum Pressure (Bar)	175	Max. first stage thrust		200 KN

$d = 0 ; r = 750$



BODY LENGTH (BL)						OH
4100		4225		4350		
30	44°	30	42°	29	41°	150
37	47°	36	46°	34	44°	450
52	52°	48	50°	44	48°	750

Tipping angle (θ)
Body + payload mass, W (tonne)

For guidance only;

Higher Rated Pressures may be possible. To check your application, email Edbro plc at <applications@edbro.co.uk>

- If hydraulic pressure is used to limit overloading, the system relief valve must be set to the Rated Pressure unless agreed otherwise by Edbro
- The system relief valve can be set to Maximum Pressure if the load is limited by other means. See RATINGS page for advice
- This cylinder is for lifting purposes only and sideload conditions must be avoided
- Cylinder is painted in primer paint to RAL5013
- See bracket options page BRKT01, BRKT02
- See installation instructions INSTALL01
- Use oil according to specification OIL01

*Include 9mm Pull Out Last Stage Chrome Plated

Edbro
SETTING THE INDUSTRY STANDARD

Edbro plc
Nelson Street, Bolton, Lancashire BL3 2JJ UK
Tel +44 (0) 1204 528888 Fax +44 (0) 1204 531957
Email: postmaster@edbro.com Web: www.edbro.com

Technical Specifications are subject to change without notice
Date Created/Updated: 22 December 2009 12:10:38
Refer www.edbro.com to confirm latest specification
All dimensions are in 'mm', unless otherwise stated