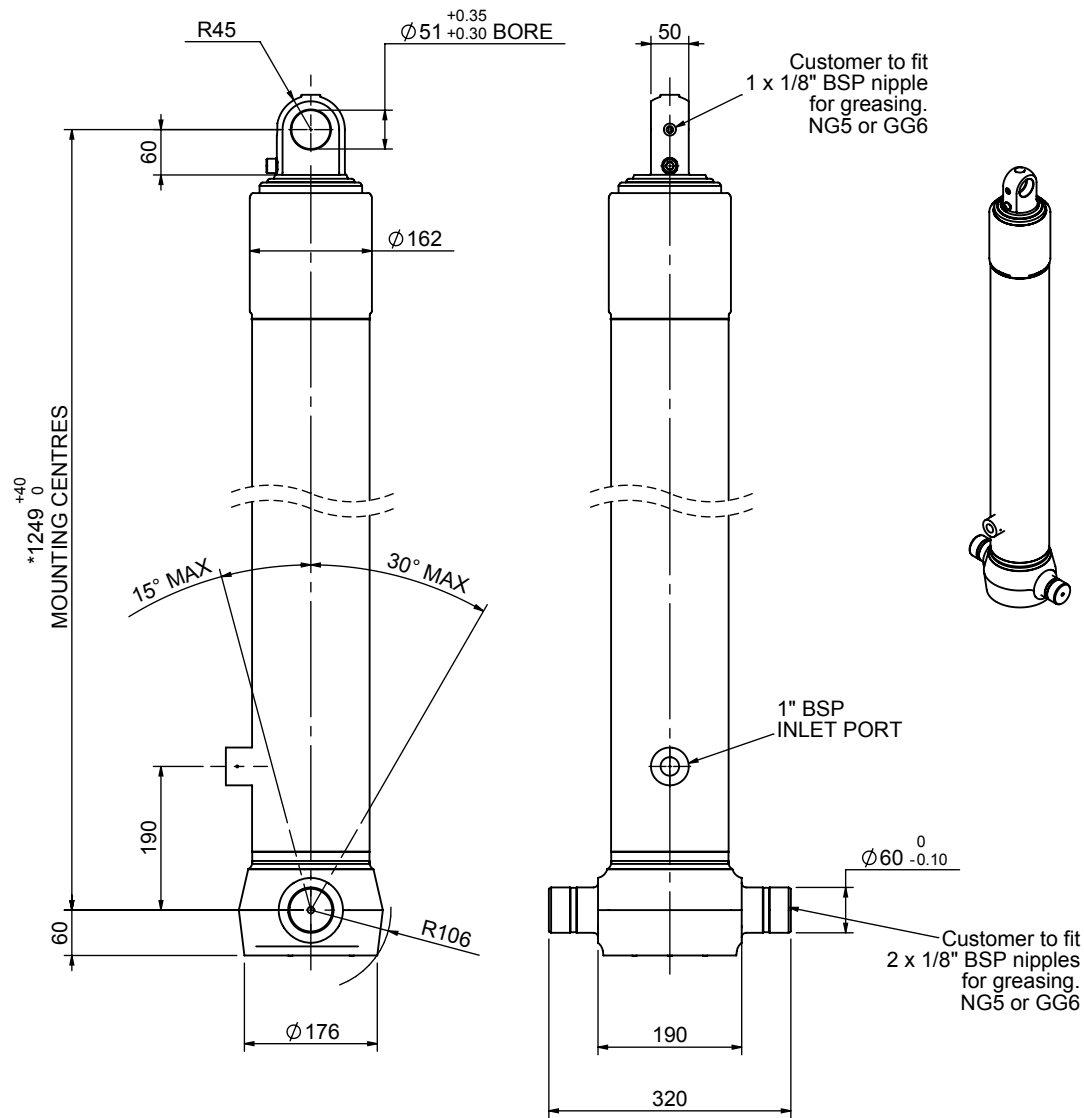


Cylinder 3 stage front end with plain eye

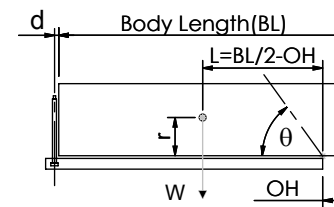


*Includes 9mm Pull Out.
Last Stage Chrome Plated

CS130E33019B19A01

SPECIFICATION		TIPPING CAPACITY : 29-52 TONNES***		
Stage	Diameter	Length	Stroke	Swept Volume
-	-	-	-	-
-	-	-	-	-
-	-	-	-	-
0	155	1225	-	-
1	136	1190	988	14
2	117	1190	1012	11
3	98	1190	1017	8
Total (+5/-10)			3017	33
Final stroke reduced by	0	Priming Volume		11
Cylinder Mass (Kg)	101	Total Volume (Litres)		43
Maximum Pressure (Bar)	190	Max. first stage thrust		200 KN

***TIPPING CAPACITY AT WORKING PRESSURE



BODY LENGTH (BL)						OH
4200	4325	4450				
31	45°	30	43°	29	42°	150
37	49°	36	47°	34	45°	450
52	54°	47	52°	44	50°	750

d = 0; r = 750; Working Pressure 135 bar

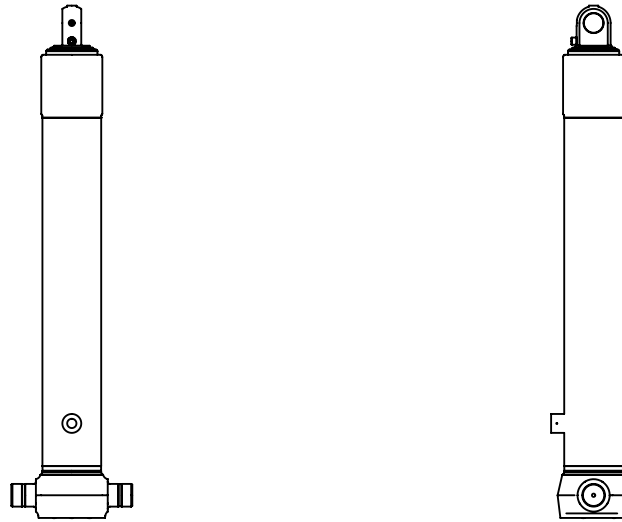
For guidance only;

Higher working pressures and tipping capacities may be possible.

To check your application email - applications@edbro.co.uk

NOTES

1. This cylinder is for lifting purposes only and side load conditions should be avoided
2. Cylinder is painted in primer paint to RAL5013
3. Refer to www.edbro.com for:-
 - Bracket details
 - Installation instructions that must be observed
 - Correct oil selection
 - An explanation of tipping capacity



CS130E33019B19A01