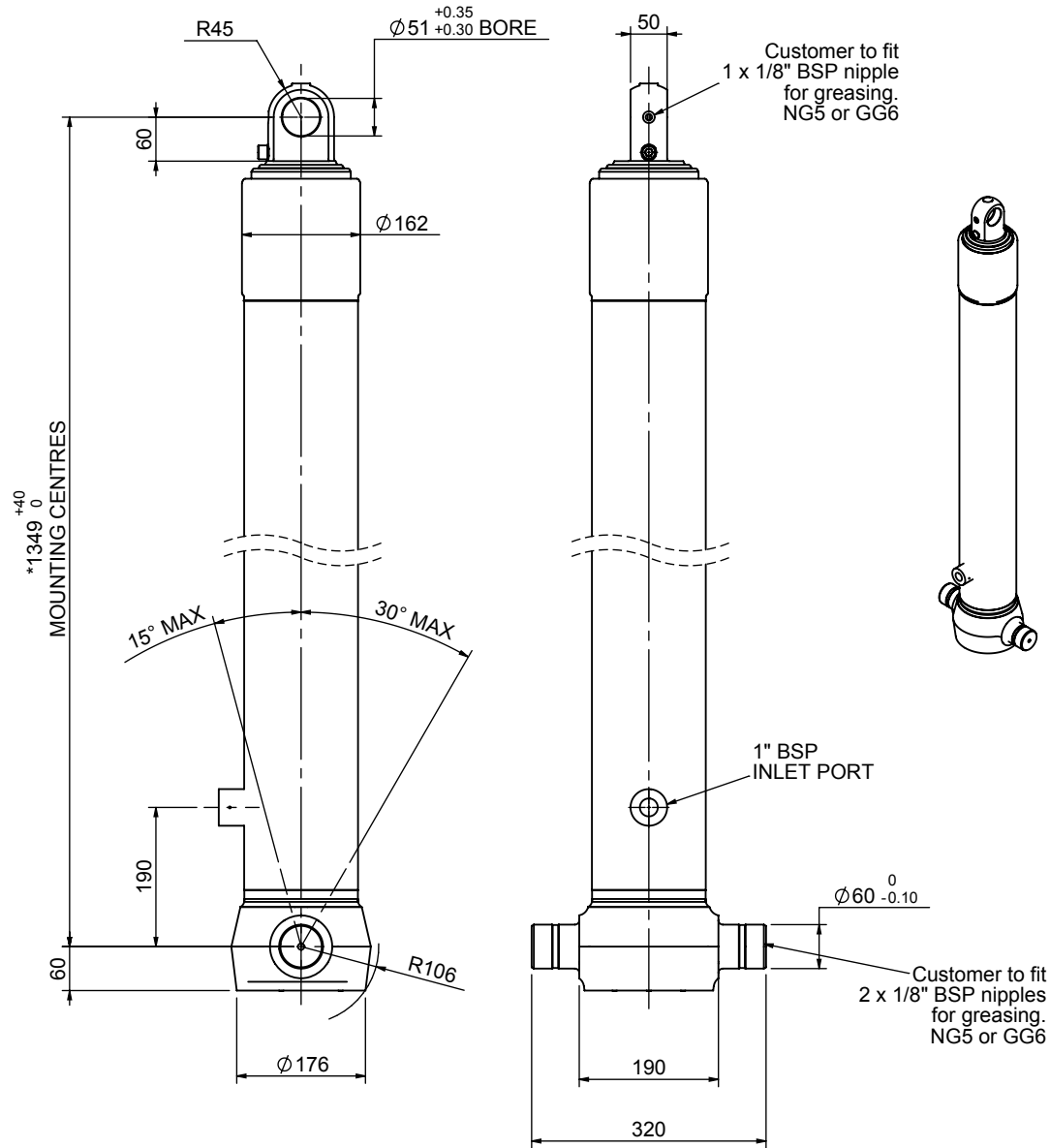


Cylinder 3 stage front end with plain eye

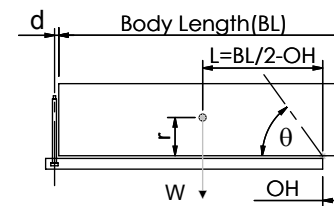


*Includes 9mm Pull Out.
Last Stage Chrome Plated

CS130E33319B19A01

SPECIFICATION		TIPPING CAPACITY : 29-49 TONNES***		
Stage	Diameter	Length	Stroke	Swept Volume
-	-	-	-	-
-	-	-	-	-
-	-	-	-	-
0	155	1325	-	-
1	136	1290	1088	16
2	117	1290	1112	12
3	98	1290	1117	8
Total (+5/-10)			3317	36
Final stroke reduced by	0	Priming Volume		12
Cylinder Mass (Kg)	108	Total Volume (Litres)		46
Maximum Pressure (Bar)	190	Max. first stage thrust		200 KN

***TIPPING CAPACITY AT WORKING PRESSURE



BODY LENGTH (BL)						OH
4450	4650	4850				
30	47°	29	44°	28	42°	150
37	50°	35	48°	33	45°	450
49	55°	44	52°	40	49°	750

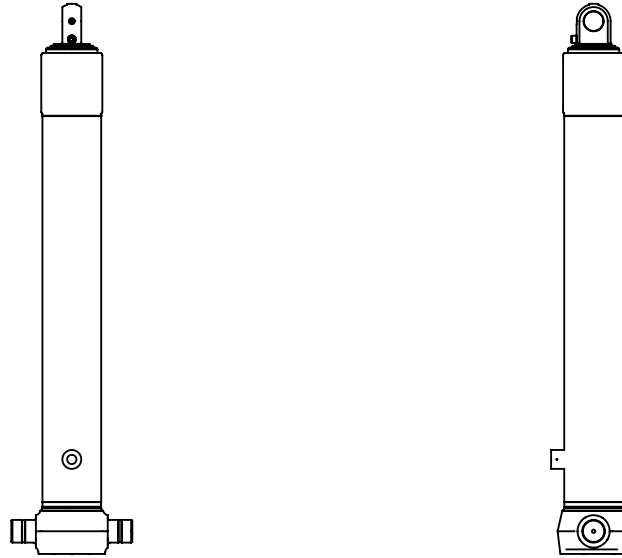
d = 0; r = 750; Working Pressure 135 bar

For guidance only;

Higher working pressures and tipping capacities may be possible.
To check your application email - applications@edbro.co.uk

NOTES

- This cylinder is for lifting purposes only and side load conditions should be avoided
- Cylinder is painted in primer paint to RAL5013
- Refer to www.edbro.com for:-
 - Bracket details
 - Installation instructions that must be observed
 - Correct oil selection
 - An explanation of tipping capacity



CS130E33319B19A01