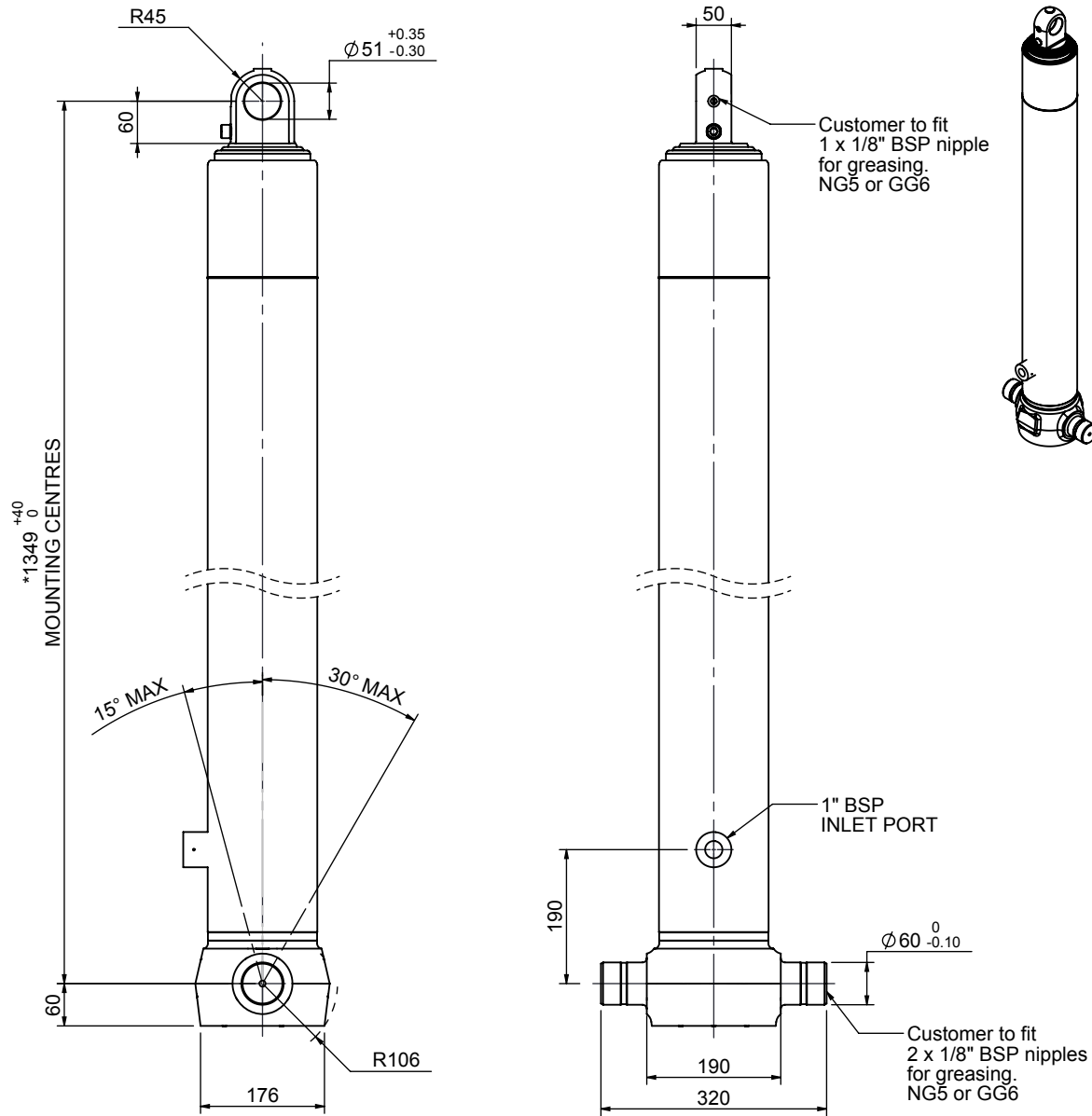


Cylinder 3 stage front end with plain eye

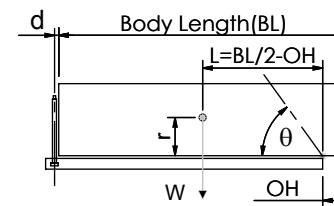


*Includes 9mm Pull Out. All Stages Chrome Plated

CS130E33319B19A01C

| SPECIFICATION | | TIPPING CAPACITY : 30-56 TONNES*** | | |
|-------------------------|----------|------------------------------------|--------|--------------|
| Stage | Diameter | Length | Stroke | Swept Volume |
| - | - | - | - | - |
| - | - | - | - | - |
| - | - | - | - | - |
| 0 | 155 | 1325 | - | - |
| 1 | 136 | 1290 | 1088 | 16 |
| 2 | 117 | 1290 | 1112 | 12 |
| 3 | 98 | 1290 | 1117 | 8 |
| Total (+5/-10) | | | 3317 | 36 |
| Final stroke reduced by | 0 | Priming Volume | | 9 |
| Cylinder Mass (Kg) | 106 | Total Volume (Litres) | | 45 |
| Maximum Pressure (Bar) | 190 | Max. first stage thrust | | 200 KN |

***TIPPING CAPACITY AT WORKING PRESSURE



| BODY LENGTH (BL) | | | | | | OH |
|------------------|-----|------|-----|------|-----|-----|
| 4450 | | 4650 | | 4850 | | |
| 32 | 47° | 31 | 44° | 30 | 42° | 150 |
| 40 | 50° | 37 | 48° | 35 | 45° | 450 |
| 56 | 55° | 49 | 52° | 44 | 49° | 750 |

d = 0; r = 750; Working Pressure 135 bar

For guidance only;

Higher working pressures and tipping capacities may be possible.

To check your application email - applications@edbro.co.uk

NOTES

1. This cylinder is for lifting purposes only and side load conditions should be avoided
2. Cylinder is painted in primer paint to RAL5013
3. Refer to www.edbro.com for:-
 - Bracket details
 - Installation instructions that must be observed
 - Correct oil selection
 - An explanation of tipping capacity