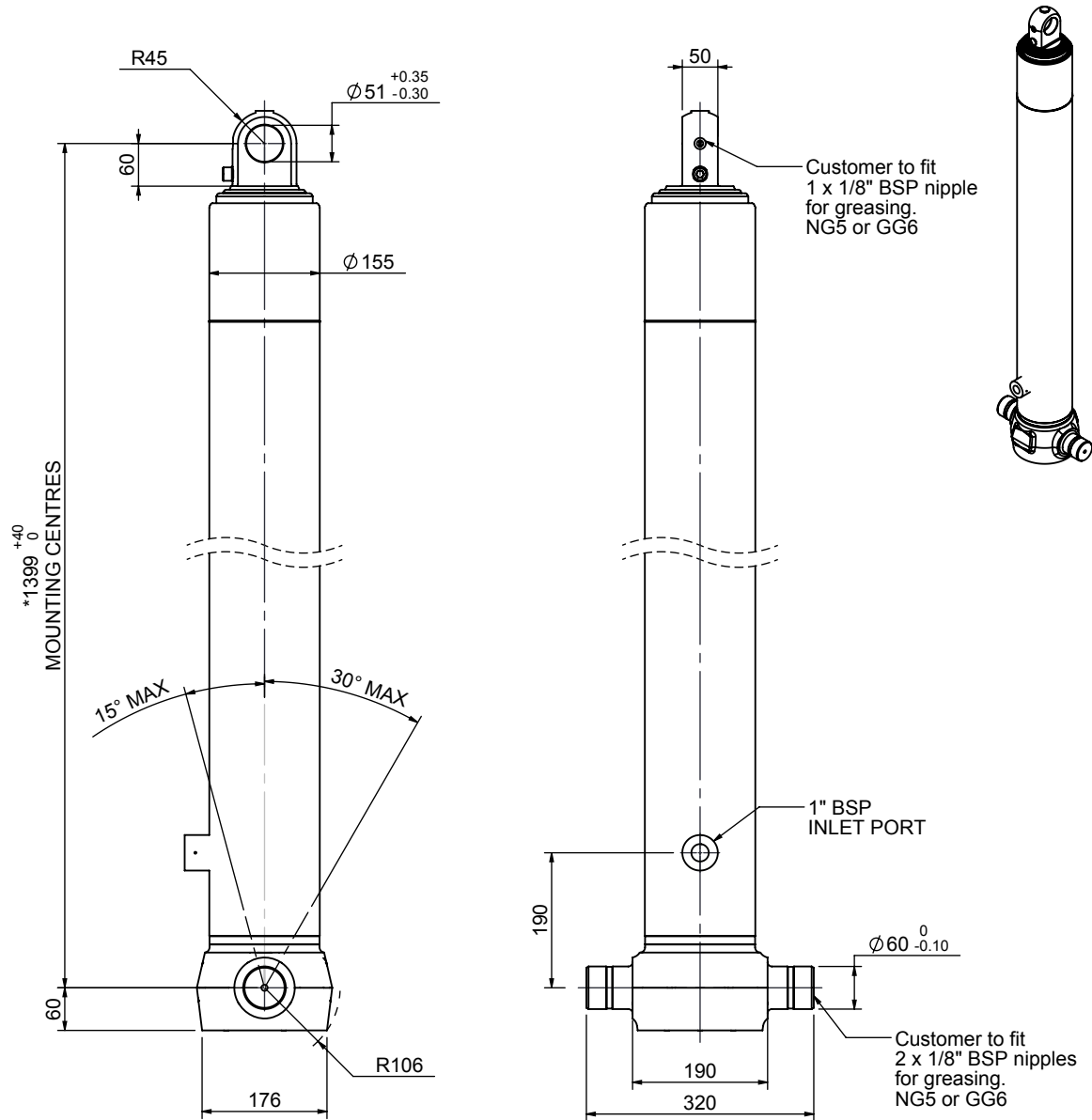


Cylinder 3 stage front end with plain eye

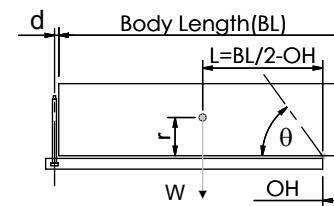


*Includes 9mm Pull Out. Last Stage Chrome Plated

CS130E33469B19A01

SPECIFICATION		TIPPING CAPACITY : 28-47 TONNES***		
Stage	Diameter	Length	Stroke	Swept Volume
-	-	-	-	-
-	-	-	-	-
-	-	-	-	-
0	155	1375	-	-
1	136	1340	1138	17
2	117	1340	1162	12
3	98	1340	1167	9
Total (+5/-10)			3467	38
Final stroke reduced by	0	Priming Volume		13
Cylinder Mass (Kg)	109	Total Volume (Litres)		51
Maximum Pressure (Bar)	190	Max. first stage thrust		200 KN

***TIPPING CAPACITY AT WORKING PRESSURE



BODY LENGTH (BL)					OH	
4600	4700	4800	4900	5000		
30	47°	29	45°	28	43°	150
36	51°	34	48°	33	46°	450
47	56°	43	52°	39	50°	750

d = 0; r = 750; Working Pressure 135 bar

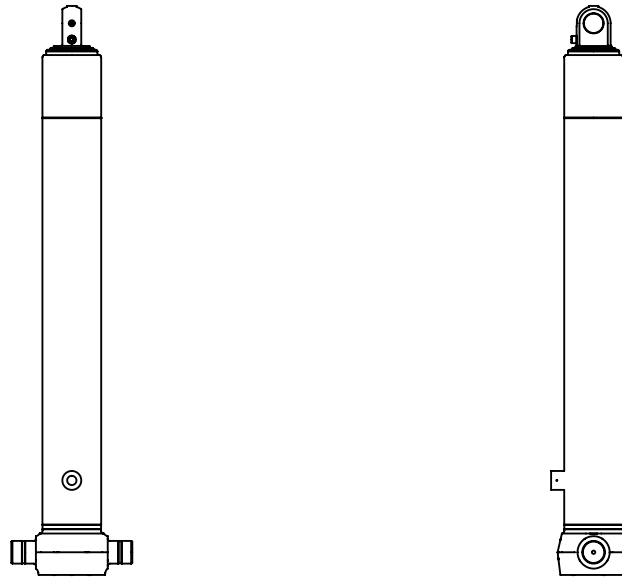
For guidance only;

Higher working pressures and tipping capacities may be possible.

To check your application email - applications@edbro.co.uk

NOTES

1. This cylinder is for lifting purposes only and side load conditions should be avoided
2. Cylinder is painted in primer paint to RAL5013
3. Refer to www.edbro.com for:-
 - Bracket details
 - Installation instructions that must be observed
 - Correct oil selection
 - An explanation of tipping capacity



CS130E33469B19A01