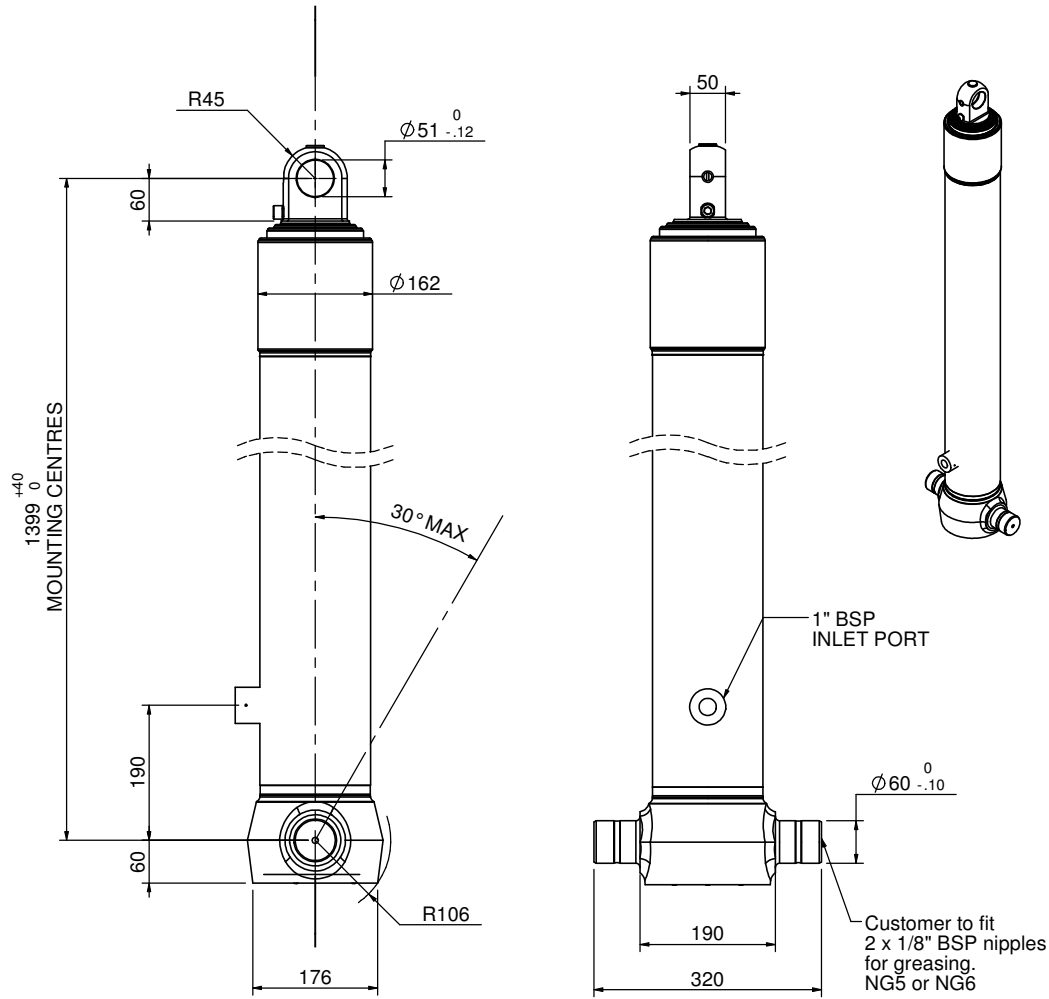


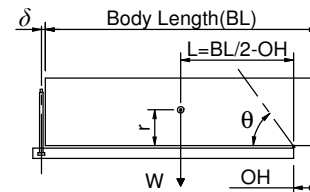
Cylinder 3 stage front end with plain eye



CS130E33469B19A01C

Stage	Diameter	Length	Stroke	Swept Volume
-	-	-	-	-
-	-	-	-	-
-	-	-	-	-
0	155	1375	-	-
1	136	1340	1138	17
2	117	1340	1162	12
3	98	1340	1167	9
Final stroke reduced by	0	Total (+5/-10)	3467	38
Cylinder Mass (Kg)	112.64	Priming Volume		12.8
Rated Pressure (Bar)	135	Total Volume (Litres)		50.8
Maximum Pressure (Bar)	175	Max. first stage thrust		200 KN

$d = 0 ; r = 750$



BODY LENGTH (BL)						OH
4600		4800		5000		
30	47°	29	45°	28	43°	150
36	51°	34	48°	33	46°	450
47	55°	43	52°	39	50°	750

Tipping angle (θ)
Body + payload mass, W (tonne)

For guidance only;

Higher Rated Pressures may be possible. To check your application, email Edbro plc at <applications@edbro.co.uk>

- If hydraulic pressure is used to limit overloading, the system relief valve must be set to the Rated Pressure unless agreed otherwise by Edbro
- The system relief valve can be set to Maximum Pressure if the load is limited by other means. See RATINGS page for advice
- This cylinder is for lifting purposes only and sideload conditions must be avoided
- Cylinder is painted in primer paint to RAL5013
- See bracket options page BRKT01, BRKT02
- See installation instructions INSTALL01
- Use oil according to specification OIL01

*Include 9mm Pull Out
All Stages Chrome Plated

Edbro
SETTING THE INDUSTRY STANDARD

Edbro plc
Nelson Street, Bolton, Lancashire BL3 2JJ UK
Tel +44 (0) 1204 528888 Fax +44 (0) 1204 531957
Email: postmaster@edbro.com Web: www.edbro.com

Technical Specifications are subject to change without notice
Date Created/Updated: 22 December 2009 14:36:33
Refer www.edbro.com to confirm latest specification
All dimensions are in 'mm', unless otherwise stated