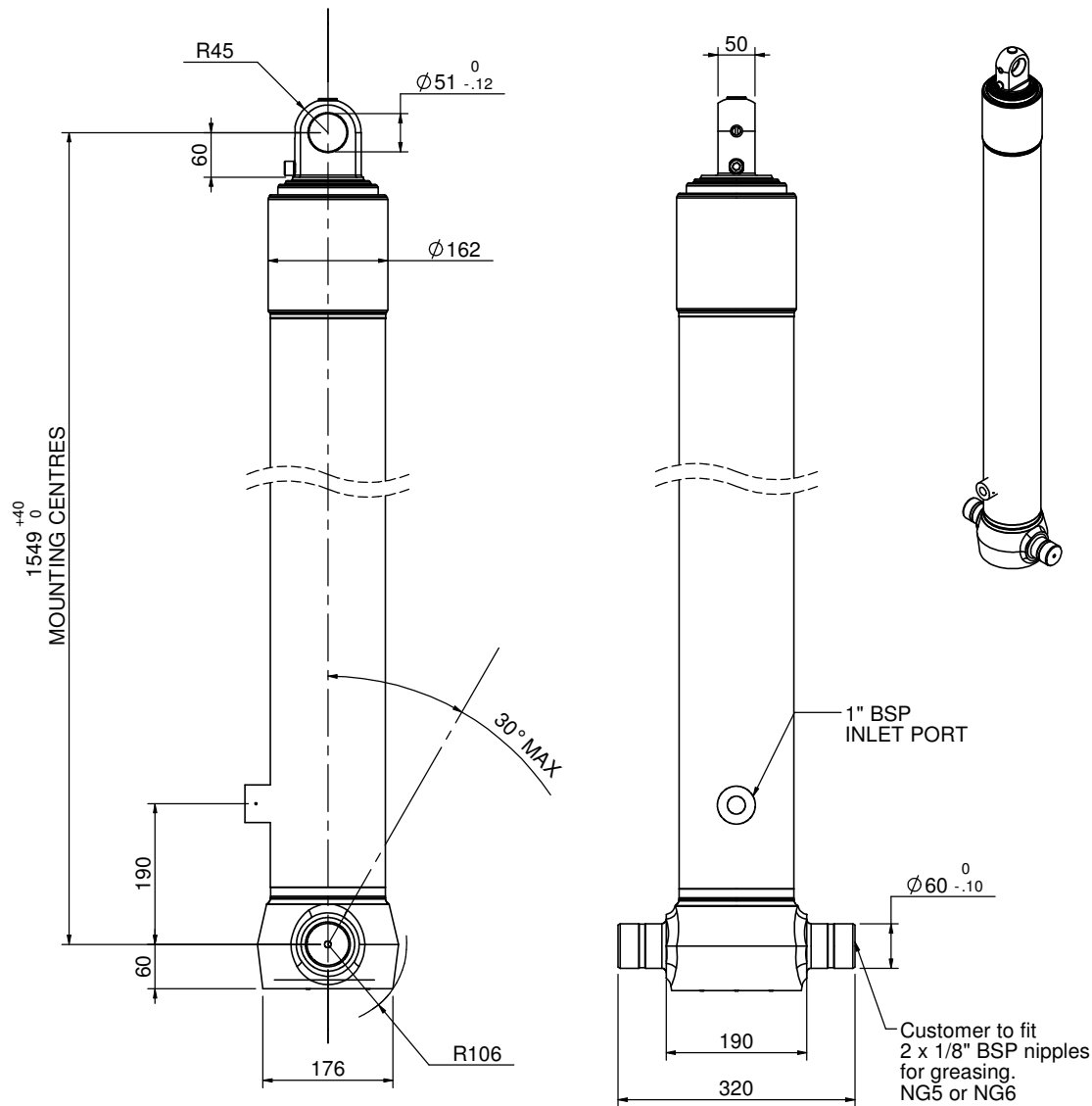


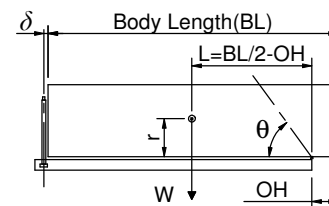
# Cylinder 3 stage front end with plain eye

CS130E33919B19A01



Stage	Diameter	Length	Stroke	Swept Volume
-	-	-	-	-
-	-	-	-	-
-	-	-	-	-
0	155	1525	-	-
1	136	1490	1288	19
2	117	1490	1312	14
3	98	1490	1317	10
Final stroke reduced by	0	Total (+5/-10)	3917	43
Cylinder Mass (Kg)	120.73	Priming Volume		14.4
Rated Pressure (Bar)	135	Total Volume (Litres)		57.4
Maximum Pressure (Bar)	175	Max. first stage thrust		200 KN

$d = 0 ; r = 750$



BODY LENGTH (BL)					OH	
5100	5350	5600				
30	48°	28	45°	27	43°	150
34	51	32	48°	31	46°	450
42	55°	39	52°	36	49°	750

— Tipping angle ( $\theta$ )  
— Body + payload mass, W (tonne)

**For guidance only;**

Higher Rated Pressures may be possible. To check your application, email Edbro plc at <applications@edbro.co.uk>

- If hydraulic pressure is used to limit overloading, the system relief valve must be set to the Rated Pressure unless agreed otherwise by Edbro
- The system relief valve can be set to Maximum Pressure if the load is limited by other means. See RATINGS page for advice
- This cylinder is for lifting purposes only and sload conditions must be avoided
- Cylinder is painted in primer paint to RAL5013
- See bracket options page BRKT01, BRKT02
- See installation instructions INSTALL01
- Use oil according to specification OIL01

**\*Include 9mm Pull Out Last Stage Chrome Plated**



**Edbro plc**  
Nelson Street, Bolton, Lancashire BL3 2JJ UK  
Tel +44 (0) 1204 528888 Fax +44 (0) 1204 531957  
Email: postmaster@edbro.com Web: www.edbro.com

Technical Specifications are subject to change without notice  
Date Created/Updated: 22 December 2009 11:46:59  
Refer www.edbro.com to confirm latest specification  
All dimensions are in 'mm', unless otherwise stated