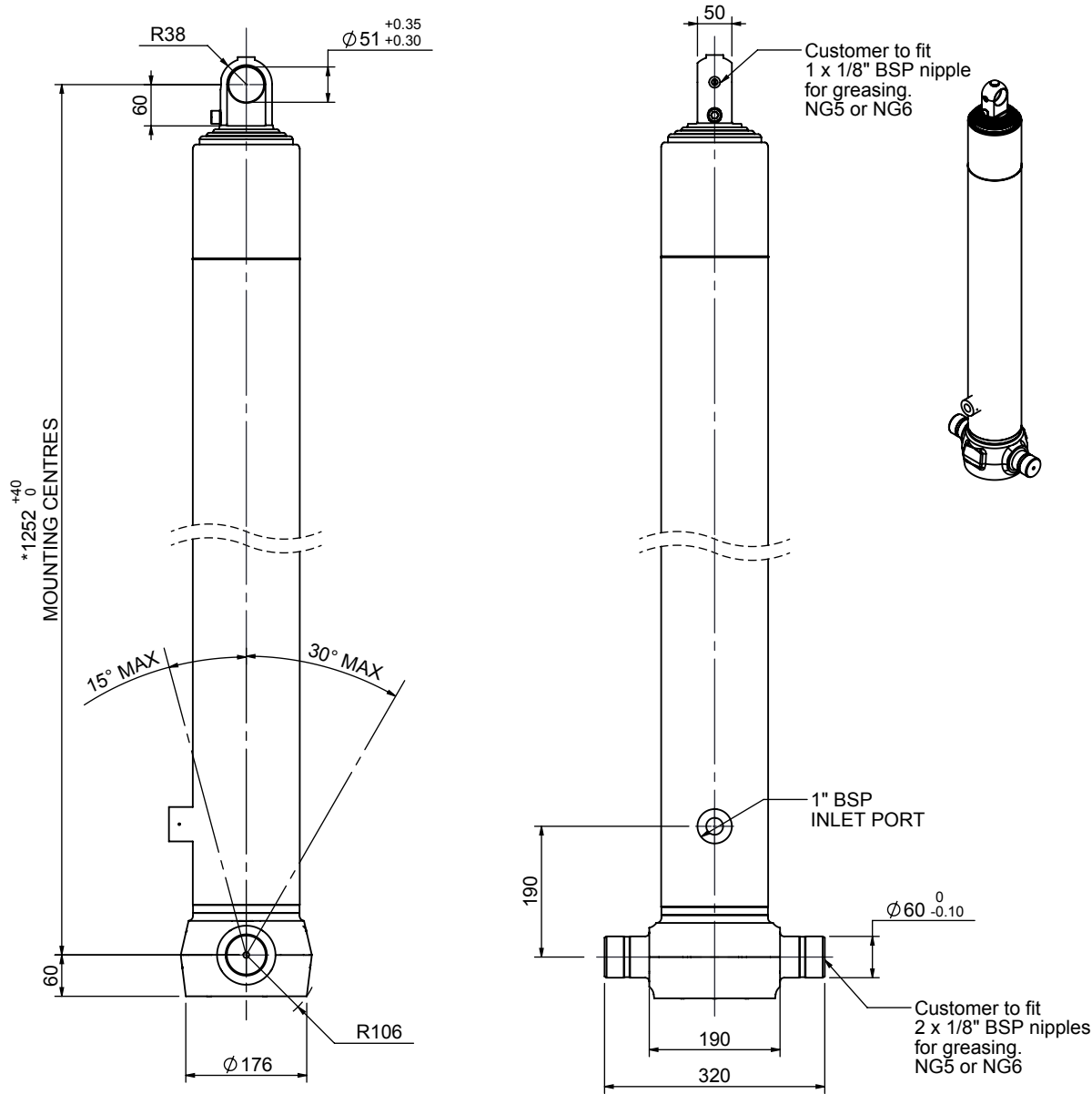


# Cylinder 4 stage front end with plain eye

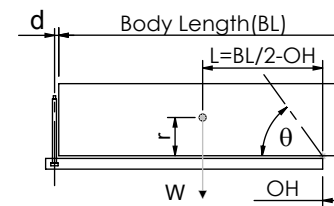


\*Includes 7mm Pull Out. Last Stage Chrome Plated

## CS130E43591B19K01

SPECIFICATION		TIPPING CAPACITY : 22-49 TONNES***		
Stage	Diameter	Length	Stroke	Swept Volume
-	-	-	-	-
-	-	-	-	-
0	155	1225	-	-
1	136	1190	990	14
2	117	1190	1012	11
3	98	1190	1017	8
4	79	1190	572	3
Total (+5/-10)			3591	36
Final stroke reduced by	450	Priming Volume		9
Cylinder Mass (Kg)	108	Total Volume (Litres)		45
Maximum Pressure (Bar)	190	Max. first stage thrust		200 KN

### \*\*\*TIPPING CAPACITY AT WORKING PRESSURE



BODY LENGTH (BL)						OH
4850	5100		5350			
25	46°	23	43°	22	41°	150
32	49°	28	46°	26	44°	450
49	54°	39	50°	33	47°	750

d = 0; r = 750; Working Pressure 135 bar

### For guidance only;

Higher working pressures and tipping capacities may be possible.

To check your application email - [applications@edbro.co.uk](mailto:applications@edbro.co.uk)

### NOTES

1. This cylinder is for lifting purposes only and side load conditions should be avoided
2. Cylinder is painted in primer paint to RAL5013
3. Refer to [www.edbro.com](http://www.edbro.com) for:-
  - Bracket details
  - Installation instructions that must be observed
  - Correct oil selection
  - An explanation of tipping capacity