

# Cylinder 4 stage front end with plain eye

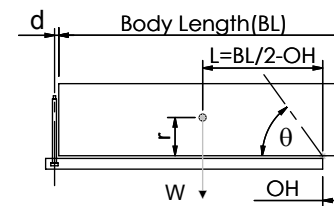
CS130E44441B19A01

**SPECIFICATION**

**TIPPING CAPACITY : 24-35 TONNES\*\*\***

Stage	Diameter	Length	Stroke	Swept Volume
-	-	-	-	-
-	-	-	-	-
0	155	1325	-	-
1	136	1290	1088	16
2	117	1290	1112	12
3	98	1290	1117	8
4	79	1290	1122	6
Total (+5/-10)			4439	42
Final stroke reduced by	0	Priming Volume		11
Cylinder Mass (Kg)	117	Total Volume (Litres)		51
Maximum Pressure (Bar)	190	Max. first stage thrust		200 KN

**\*\*\*TIPPING CAPACITY AT WORKING PRESSURE**



BODY LENGTH (BL)						OH
5850		6100		6350		
25	47°	25	45°	24	43°	150
29	50°	28	47°	26	45°	450
35	53°	32	50°	30	48°	750

d = 0; r = 750; Working Pressure 175 bar

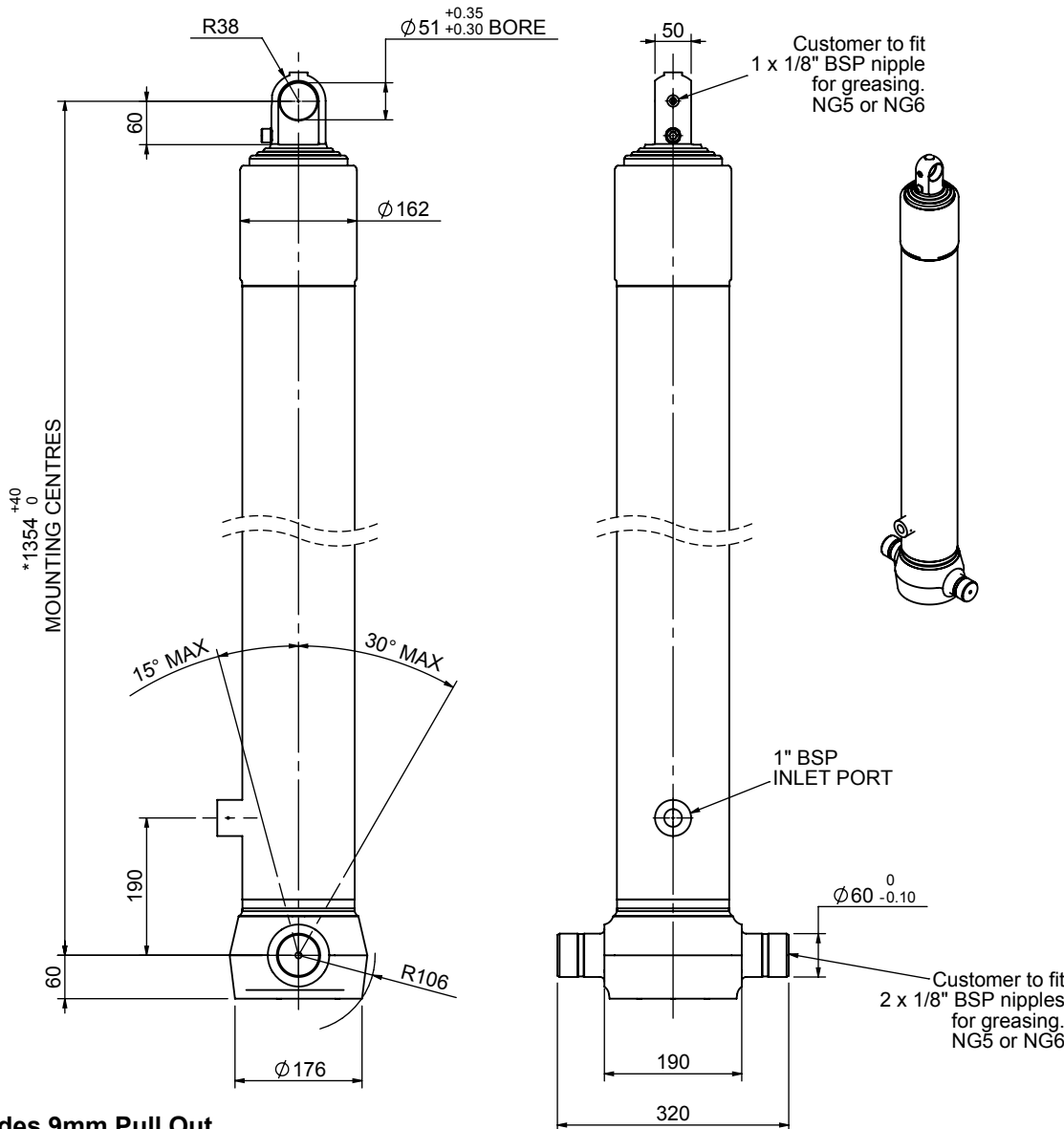
**For guidance only;**

Higher working pressures and tipping capacities may be possible.

To check your application email - [applications@edbro.co.uk](mailto:applications@edbro.co.uk)

**NOTES**

1. This cylinder is for lifting purposes only and side load conditions should be avoided
2. Cylinder is painted in primer paint to RAL5013
3. Refer to [www.edbro.com](http://www.edbro.com) for:-
  - Bracket details
  - Installation instructions that must be observed
  - Correct oil selection
  - An explanation of tipping capacity

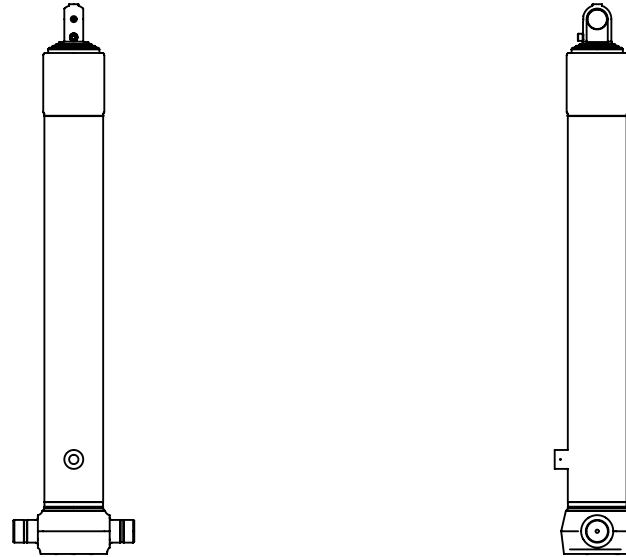


**\*Includes 9mm Pull Out. Last Stage Chrome Plated**



**Edbro plc**  
 Nelson Street, Bolton, England, BL3 2JJ  
 Tel +44 (0) 1204 528888 Fax +44 (0) 1204 531957  
 Email: [postmaster@edbro.com](mailto:postmaster@edbro.com) Web: [www.edbro.com](http://www.edbro.com)

Technical Specifications are subject to change without notice  
 Date Created/Updated: 10 September 2012  
 Refer [www.edbro.com](http://www.edbro.com) to confirm latest specification  
 All dimensions are in 'mm', unless otherwise stated



CS130E44441B19A01