

Cylinder 4 stage front end with plain eye

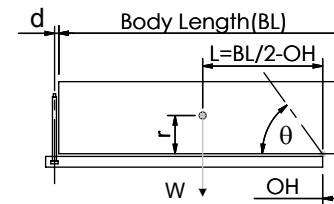
CS130E44841B19A01

SPECIFICATION

TIPPING CAPACITY : 20-28 TONNES***

Stage	Diameter	Length	Stroke	Swept Volume
-	-	-	-	-
-	-	-	-	-
0	155	1425	-	-
1	136	1390	1188	17
2	117	1390	1212	13
3	98	1390	1217	9
4	79	1390	1222	6
Total (+5/-10)			4839	45
Final stroke reduced by	0	Priming Volume		12
Cylinder Mass (Kg)	124	Total Volume (Litres)		54
Maximum Pressure (Bar)	190	Max. first stage thrust		200 KN

*****TIPPING CAPACITY AT WORKING PRESSURE**



BODY LENGTH (BL)						OH
6350	6600	6850				
21	47°	21	45°	20	43°	150
24	50°	23	47°	22	45°	450
28	53°	26	50°	25	48°	750

d = 0; r = 750; Working Pressure 150 bar

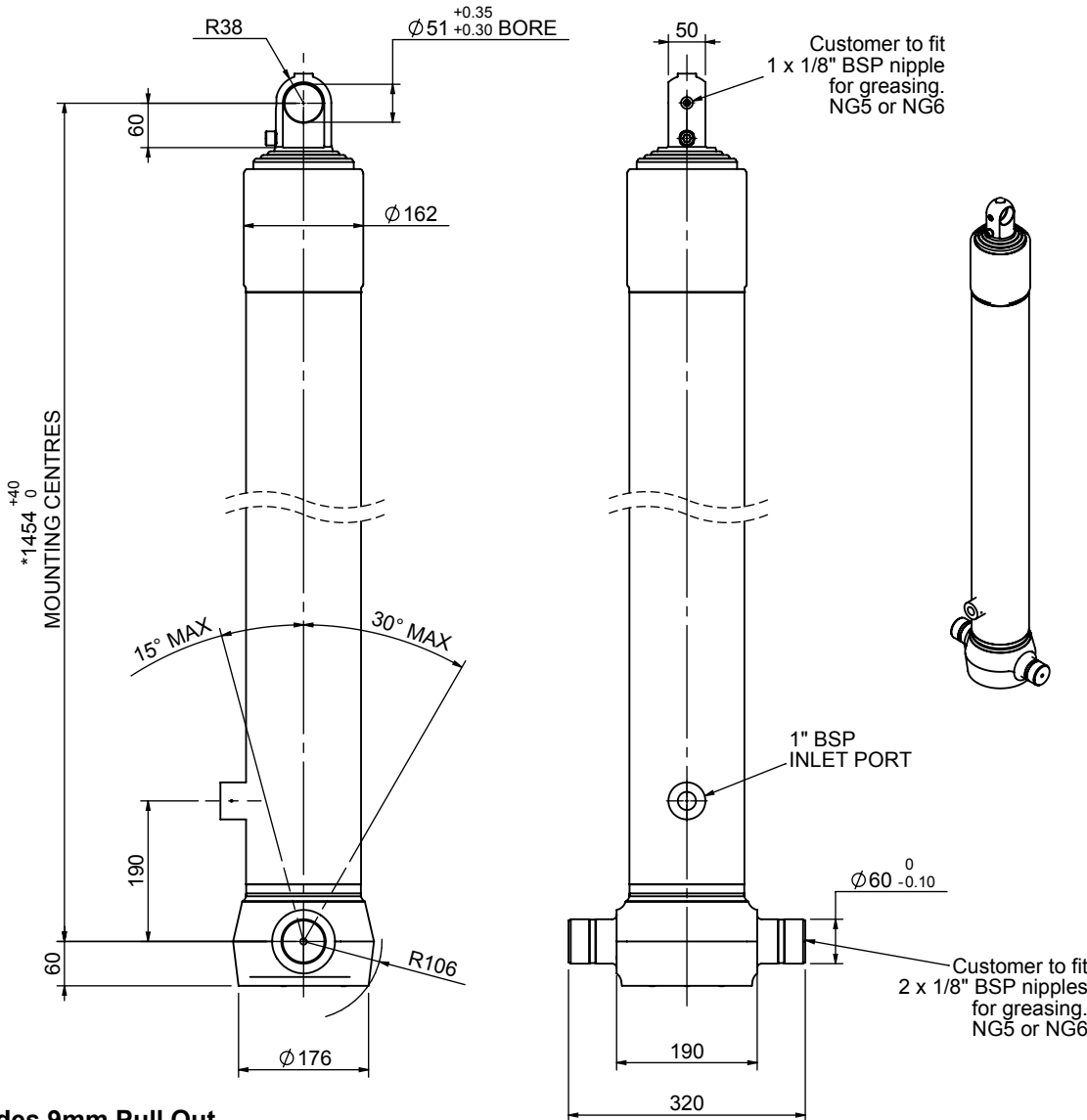
For guidance only;

Higher working pressures and tipping capacities may be possible.

To check your application email - applications@edbro.co.uk

NOTES

1. This cylinder is for lifting purposes only and side load conditions should be avoided
2. Cylinder is painted in primer paint to RAL5013
3. Refer to www.edbro.com for:-
 - Bracket details
 - Installation instructions that must be observed
 - Correct oil selection
 - An explanation of tipping capacity

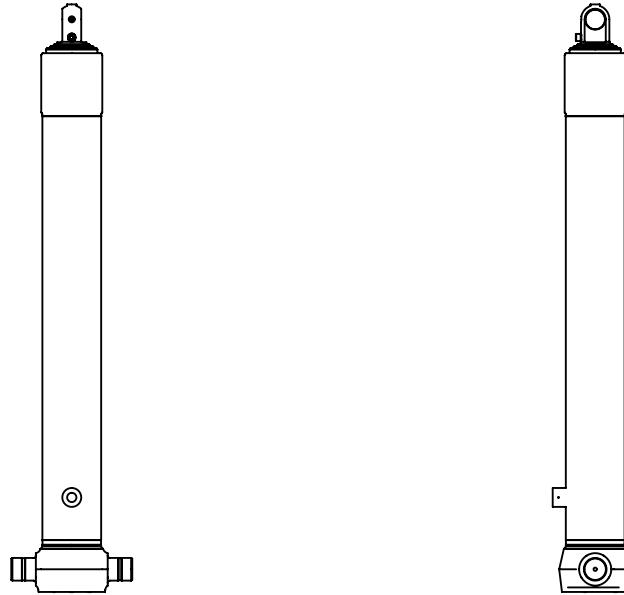


*Includes 9mm Pull Out.
Last Stage Chrome Plated



Edbro plc
Nelson Street, Bolton, England, BL3 2JJ
Tel +44 (0) 1204 528888 Fax +44 (0) 1204 531957
Email: postmaster@edbro.com Web: www.edbro.com

Technical Specifications are subject to change without notice
Date Created/Updated: 10 September 2012
Refer www.edbro.com to confirm latest specification
All dimensions are in 'mm', unless otherwise stated



CS130E44841B19A01