

# Cylinder 3 stage front end with spherical eye

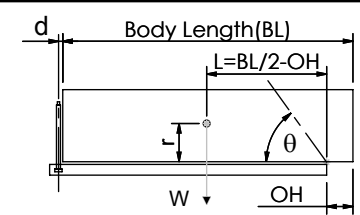
## CS130S32569B19A01

### SPECIFICATION

TIPPING CAPACITY : 30-53 TONNES\*\*\*

Stage	Diameter	Length	Stroke	Swept Volume
-	-	-	-	-
-	-	-	-	-
-	-	-	-	-
0	155	1075	-	-
1	136	1040	838	12
2	117	1040	862	9
3	98	1040	867	7
Total (+5/-10)			3707	38
Final stroke reduced by	0	Priming Volume		10
Cylinder Mass (Kg)	94	Total Volume (Litres)		48
Maximum Pressure (Bar)	190	Max. first stage thrust		200 KN

### \*\*\*TIPPING CAPACITY AT WORKING PRESSURE

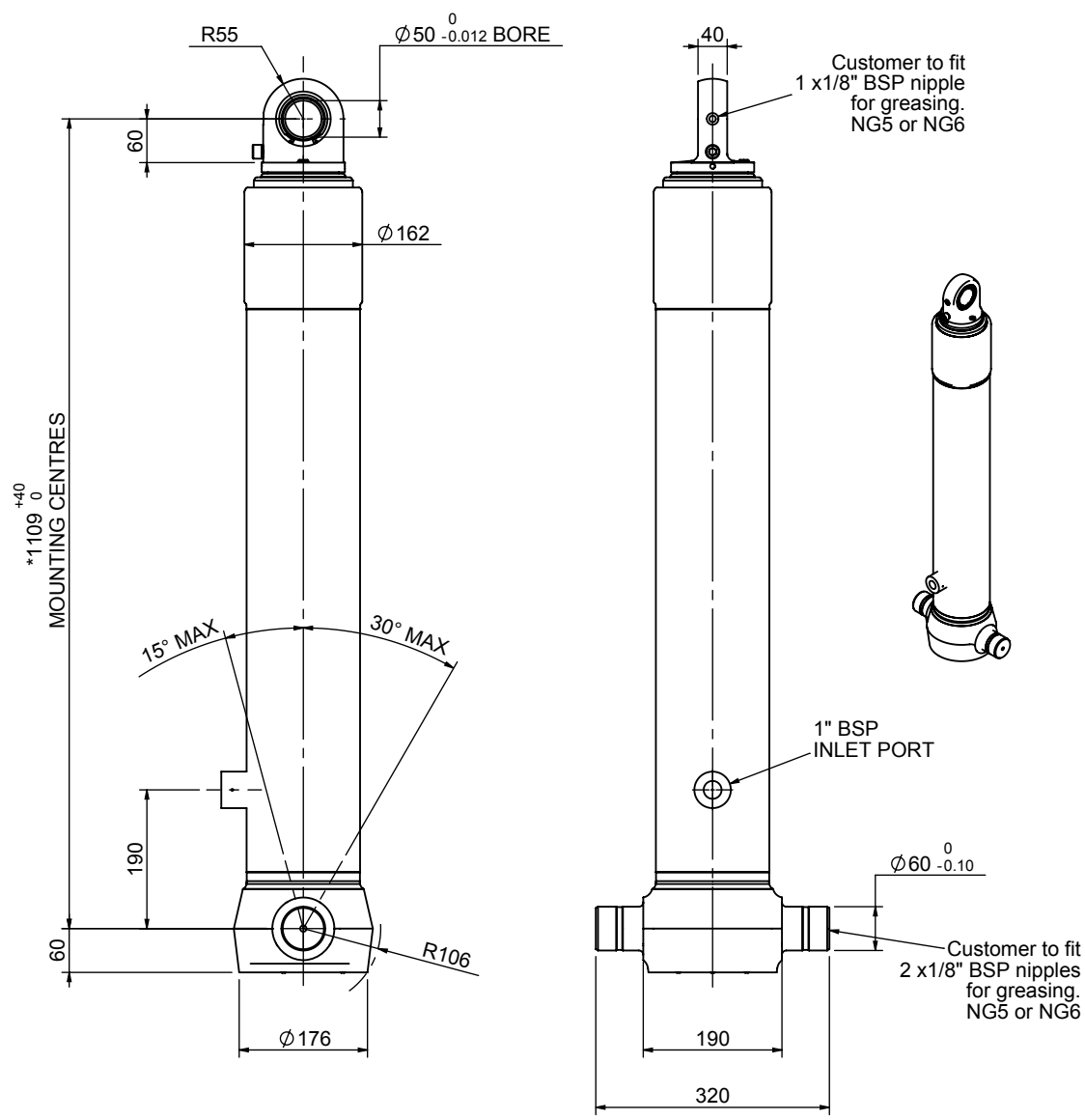


BODY LENGTH (BL)						OH
3900		4000		4100		
30	41°					150
37	45°	36	43°	35	42°	450
53	50°	49	48°	46	46°	750

$d = 0$ ;  $r = 750$ ; Working Pressure 135 bar  
 For guidance only;  
 Higher working pressures and tipping capacities may be possible.  
 To check your application email - [applications@edbro.co.uk](mailto:applications@edbro.co.uk)

### NOTES

- This cylinder is for lifting purposes only and side load conditions should be avoided
- Cylinder is painted in primer paint to RAL5013
- Refer to [www.edbro.com](http://www.edbro.com) for:-
  - Bracket details
  - Installation instructions that must be observed
  - Correct oil selection
  - An explanation of tipping capacity

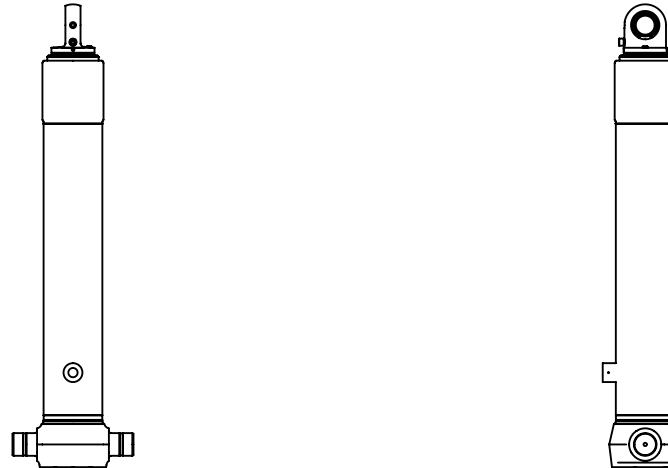


\*Includes 9mm Pull Out.  
 Last Stage Chrome Plated



**Edbro plc**  
 Nelson Street, Bolton, England, BL3 2JJ  
 Tel +44 (0) 1204 528888 Fax +44 (0) 1204 531957  
 Email: [postmaster@edbro.com](mailto:postmaster@edbro.com) Web: [www.edbro.com](http://www.edbro.com)

Technical Specifications are subject to change without notice  
 Date Created/Updated: 12 September 2012  
 Refer [www.edbro.com](http://www.edbro.com) to confirm latest specification  
 All dimensions are in 'mm', unless otherwise stated



CS130S32569B19A01