

CS130S33919B40A03

Cylinder 3 stage front end with spherical eye

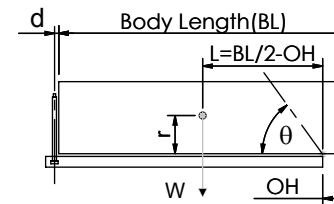
CS130S33919B40A03

SPECIFICATION

TIPPING CAPACITY : 26-41 TONNES***

Stage	Diameter	Length	Stroke	Swept Volume
-	-	-	-	-
-	-	-	-	-
-	-	-	-	-
0	155	1525	-	-
1	136	1490	1288	19
2	117	1490	1312	14
3	98	1540	1317	10
Total (+5/-10)			3917	43
Final stroke reduced by	0	Priming Volume		14
Cylinder Mass (Kg)	122	Total Volume (Litres)		57
Maximum Pressure (Bar)	190	Max. first stage thrust		200 KN

*****TIPPING CAPACITY AT WORKING PRESSURE**



BODY LENGTH (BL)					OH	
5100	5300	5500				
28	48°	27	46°	26	44°	150
33	51°	31	49°	29	47°	450
41	56°	38	53°	35	50°	750

d = 0; r = 750; Working Pressure 120 bar

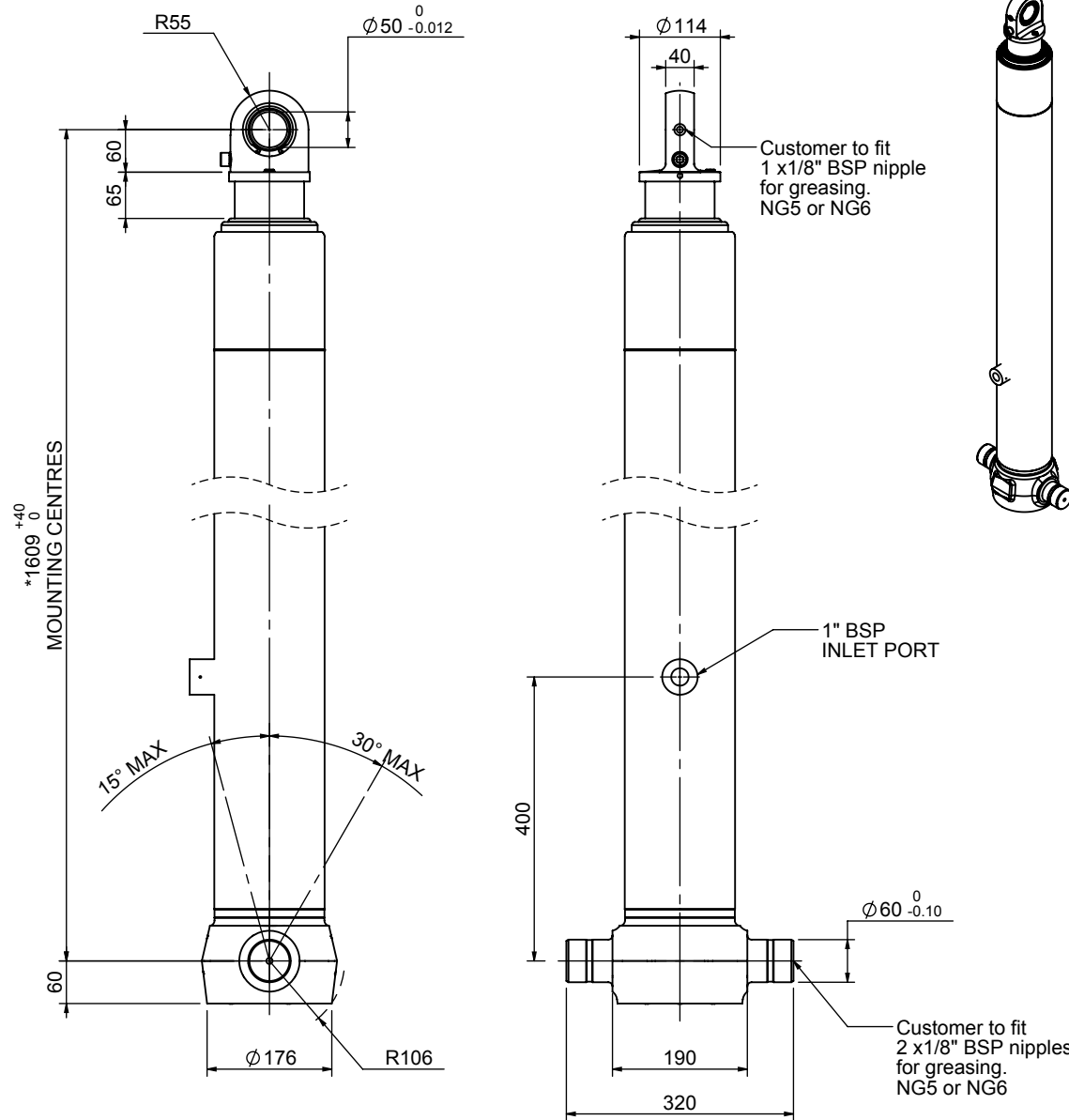
For guidance only;

Higher working pressures and tipping capacities may be possible.

To check your application email - applications@edbro.co.uk

NOTES

1. This cylinder is for lifting purposes only and side load conditions should be avoided
2. Cylinder is painted in primer paint to RAL5013
3. Refer to www.edbro.com for:-
 - Bracket details
 - Installation instructions that must be observed
 - Correct oil selection
 - An explanation of tipping capacity



Customer to fit 1 x 1/8" BSP nipple for greasing. NG5 or NG6

1" BSP INLET PORT

Customer to fit 2 x 1/8" BSP nipples for greasing. NG5 or NG6

*Includes 9mm Pull Out. Last Stage Chrome Plated



Edbro plc
 Nelson Street, Bolton, England, BL3 2JJ
 Tel +44 (0) 1204 528888 Fax +44 (0) 1204 531957
 Email: postmaster@edbro.com Web: www.edbro.com

Technical Specifications are subject to change without notice
 Date Created/Updated: 17 October 2014
 Refer www.edbro.com to confirm latest specification
 All dimensions are in 'mm', unless otherwise stated