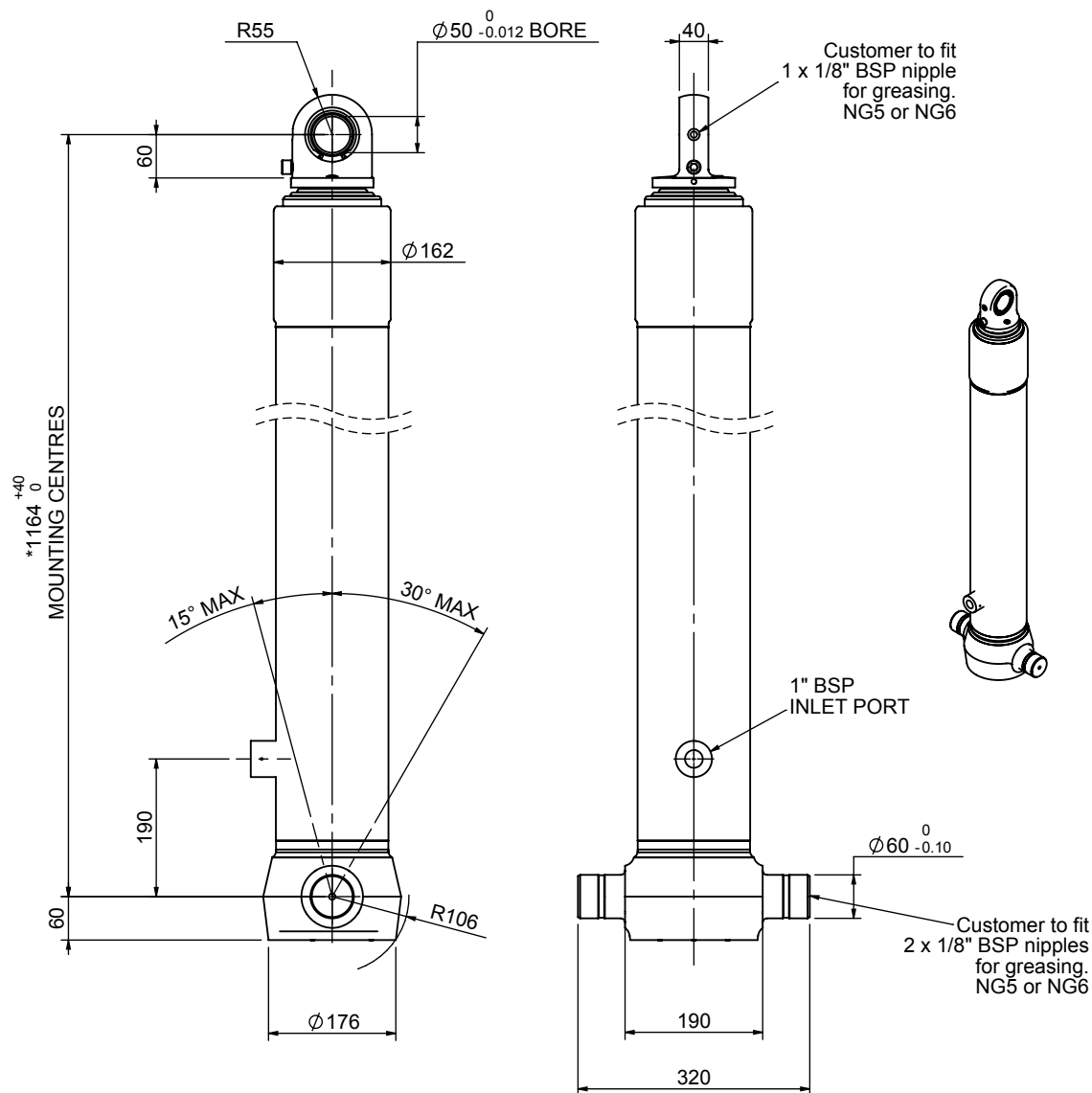


Cylinder 4 stage front end with spherical eye

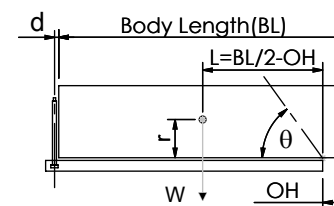
CS130S43641B19A01



*Includes 9mm Pull Out.
Last Stage Chrome Plated

SPECIFICATION		TIPPING CAPACITY : 25-43 TONNES***		
Stage	Diameter	Length	Stroke	Swept Volume
-	-	-	-	-
-	-	-	-	-
0	155	1125	-	-
1	136	1090	888	13
2	117	1090	912	10
3	98	1090	917	7
4	79	1090	922	5
Total (+5/-10)			3639	35
Final stroke reduced by	0	Priming Volume		9
Cylinder Mass (Kg)	105	Total Volume (Litres)		35
Maximum Pressure (Bar)	190	Max. first stage thrust		200 KN

***TIPPING CAPACITY AT WORKING PRESSURE



BODY LENGTH (BL)					OH	
4850	5050	5250				
27	47°	26	44°	25	43°	150
33	50°	31	48°	29	45°	450
43	54°	38	51°	35	49°	750

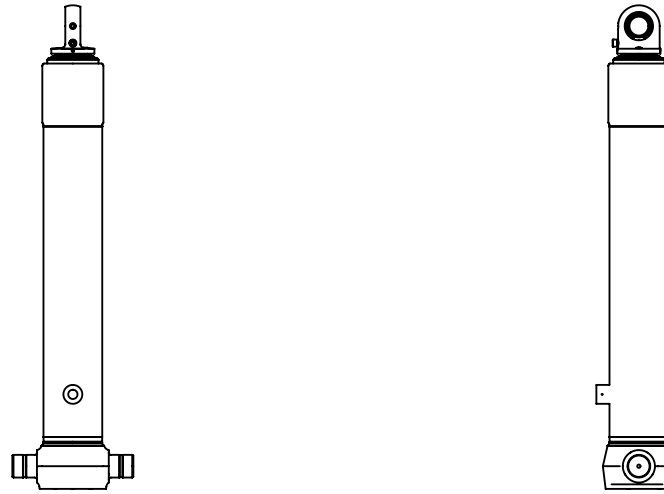
d = 0; r = 750; Working Pressure 175 bar

For guidance only;

Higher working pressures and tipping capacities may be possible.
To check your application email - applications@edbro.co.uk

NOTES

1. This cylinder is for lifting purposes only and side load conditions should be avoided
2. Cylinder is painted in primer paint to RAL5013
3. Refer to www.edbro.com for:-
 - Bracket details
 - Installation instructions that must be observed
 - Correct oil selection
 - An explanation of tipping capacity



CS130S43641B19A01