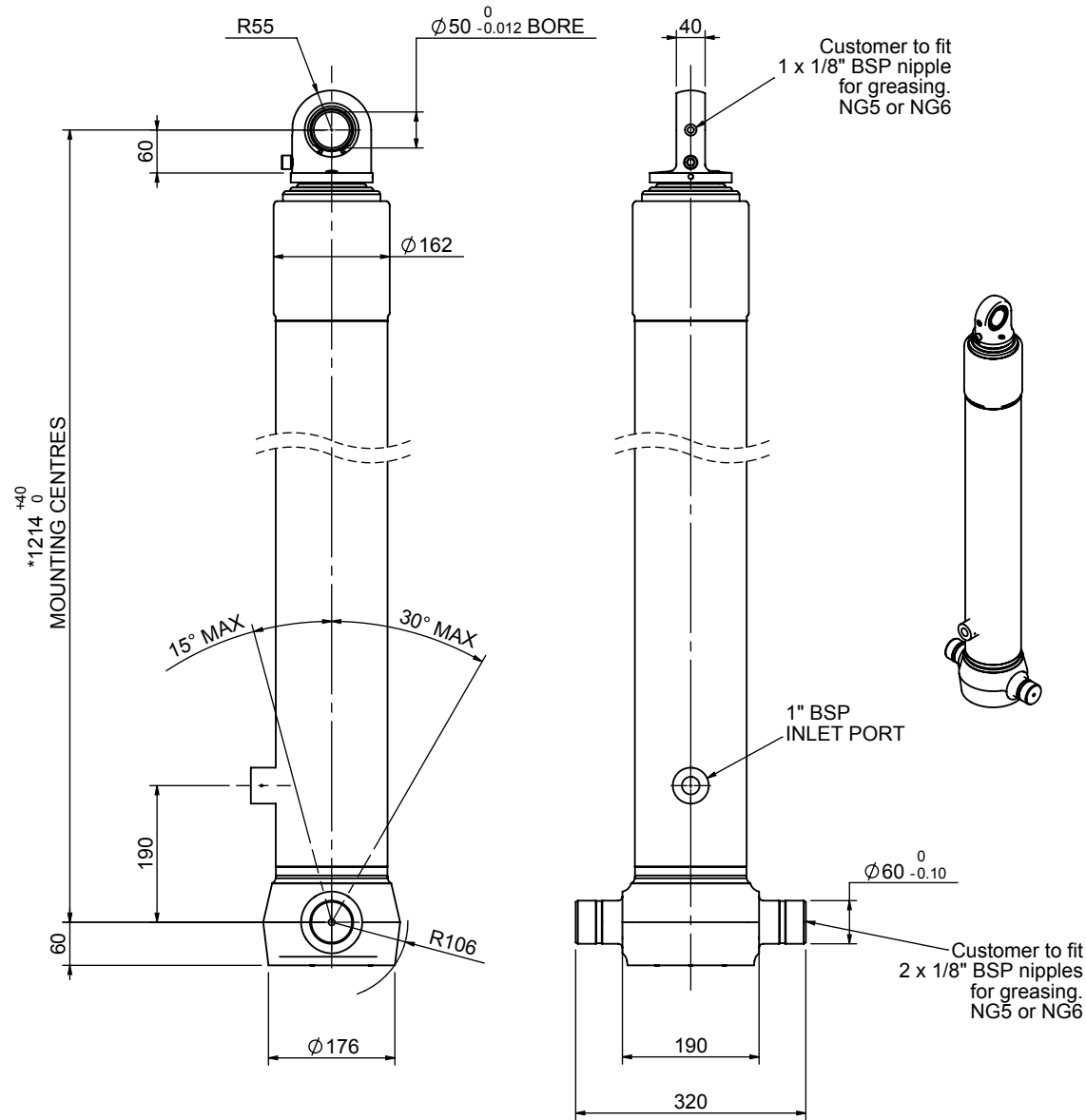


Cylinder 4 stage front end with spherical eye

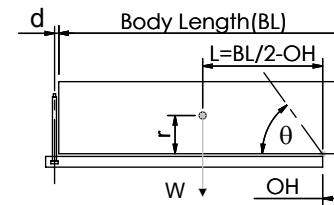


*Includes 9mm Pull Out.
Last Stage Chrome Plated

CS130S43841B19A01

SPECIFICATION		TIPPING CAPACITY : 25-40 TONNES***		
Stage	Diameter	Length	Stroke	Swept Volume
-	-	-	-	-
-	-	-	-	-
0	155	1175	-	-
1	136	1140	938	14
2	117	1140	962	10
3	98	1140	967	7
4	79	1140	972	5
Total (+5/-10)			3839	36
Final stroke reduced by	0	Priming Volume		10
Cylinder Mass (Kg)	109	Total Volume (Litres)		46
Maximum Pressure (Bar)	190	Max. first stage thrust		200 KN

***TIPPING CAPACITY AT WORKING PRESSURE



BODY LENGTH (BL)						OH
5100		5300		5500		
27	47°	26	45°	25	43°	150
32	50°	30	48°	28	46°	450
40	54°	37	51°	34	49°	750

d = 0; r = 750; Working Pressure 175 bar

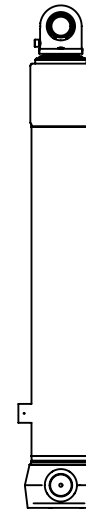
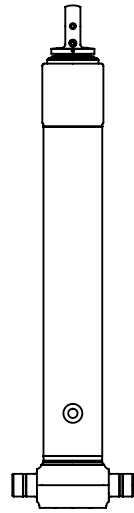
For guidance only;

Higher working pressures and tipping capacities may be possible.

To check your application email - applications@edbro.co.uk

NOTES

1. This cylinder is for lifting purposes only and side load conditions should be avoided
2. Cylinder is painted in primer paint to RAL5013
3. Refer to www.edbro.com for:-
 - Bracket details
 - Installation instructions that must be observed
 - Correct oil selection
 - An explanation of tipping capacity



CS130S43841B19A01