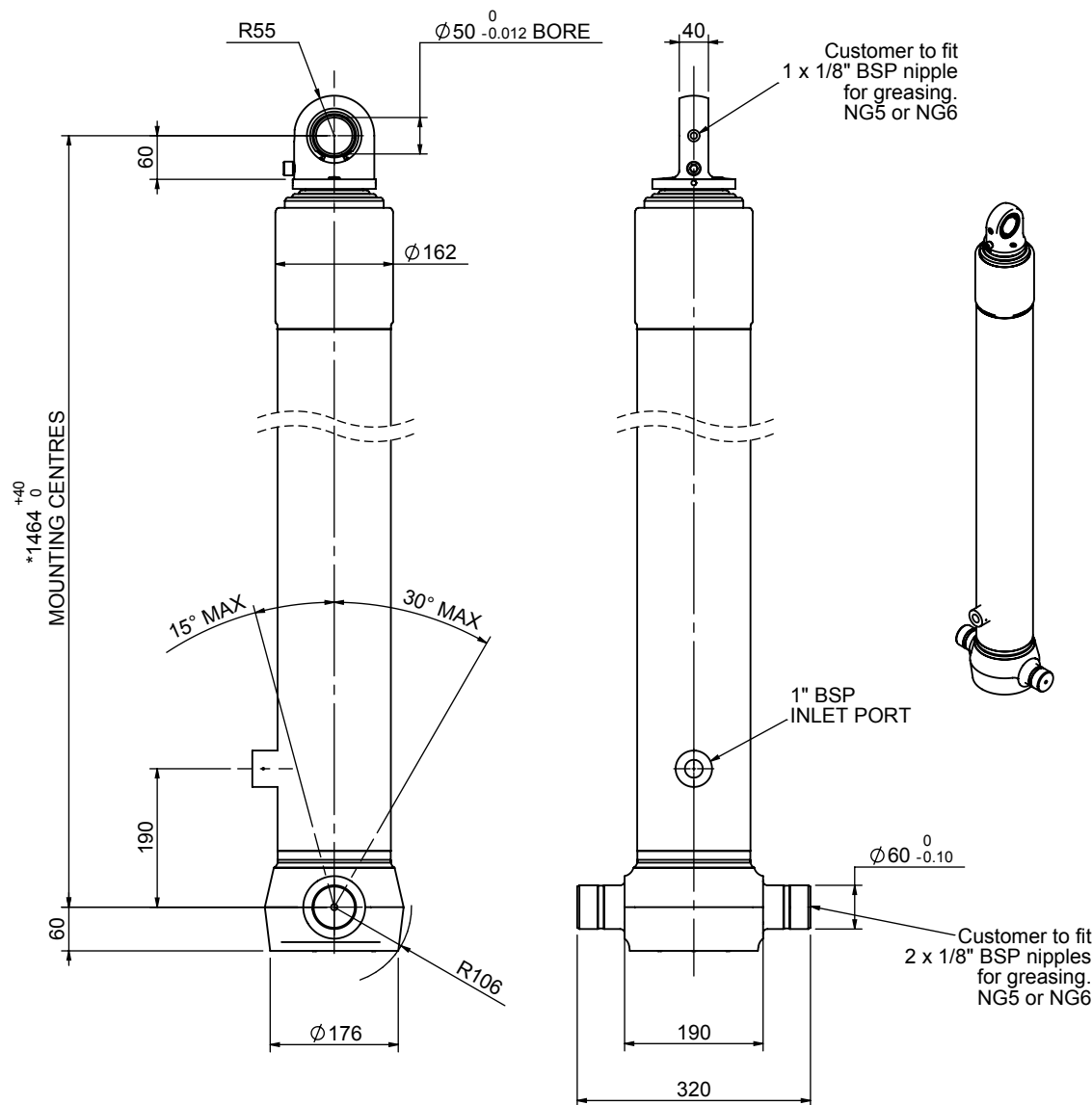


Cylinder 4 stage front end with spherical eye

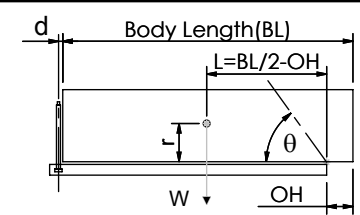
CS130S44841B19A01



SPECIFICATION

SPECIFICATION		TIPPING CAPACITY : 20-28 TONNES***		
Stage	Diameter	Length	Stroke	Swept Volume
-	-	-	-	-
-	-	-	-	-
0	155	1425	-	-
1	136	1390	1188	17
2	117	1390	1212	13
3	98	1390	1217	9
4	79	1390	1222	6
Total (+5/-10)			4839	1614
Final stroke reduced by	0	Priming Volume		12
Cylinder Mass (Kg)	127	Total Volume (Litres)		1626
Maximum Pressure (Bar)	190	Max. first stage thrust		200 KN

***TIPPING CAPACITY AT WORKING PRESSURE



BODY LENGTH (BL)						OH
6350		6600		6850		
21	47°	21	45°	20	43°	150
24	50°	23	47°	22	45°	450
28	53°	26	50°	25	48°	750

$d = 0$; $r = 750$; Working Pressure 150 bar
 For guidance only;
 Higher working pressures and tipping capacities may be possible.
 To check your application email - applications@edbro.co.uk

NOTES

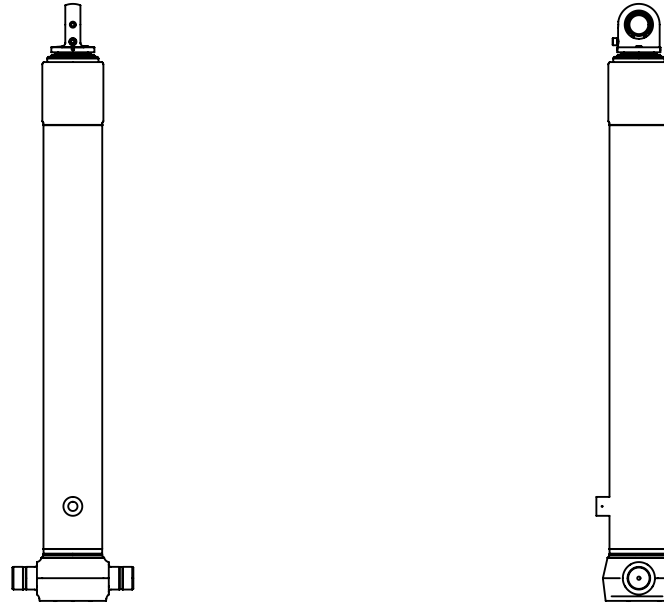
1. This cylinder is for lifting purposes only and side load conditions should be avoided
2. Cylinder is painted in primer paint to RAL5013
3. Refer to www.edbro.com for:-
 - Bracket details
 - Installation instructions that must be observed
 - Correct oil selection
 - An explanation of tipping capacity

*Includes 9mm Pull Out.



Edbro plc
 Nelson Street, Bolton, England, BL3 2JJ
 Tel +44 (0) 1204 528888 Fax +44 (0) 1204 531957
 Email: postmaster@edbro.com Web: www.edbro.com

Technical Specifications are subject to change without notice
 Date Created/Updated: 18 July 2012
 Refer www.edbro.com to confirm latest specification
 All dimensions are in 'mm', unless otherwise stated



CS130S44841B19A01