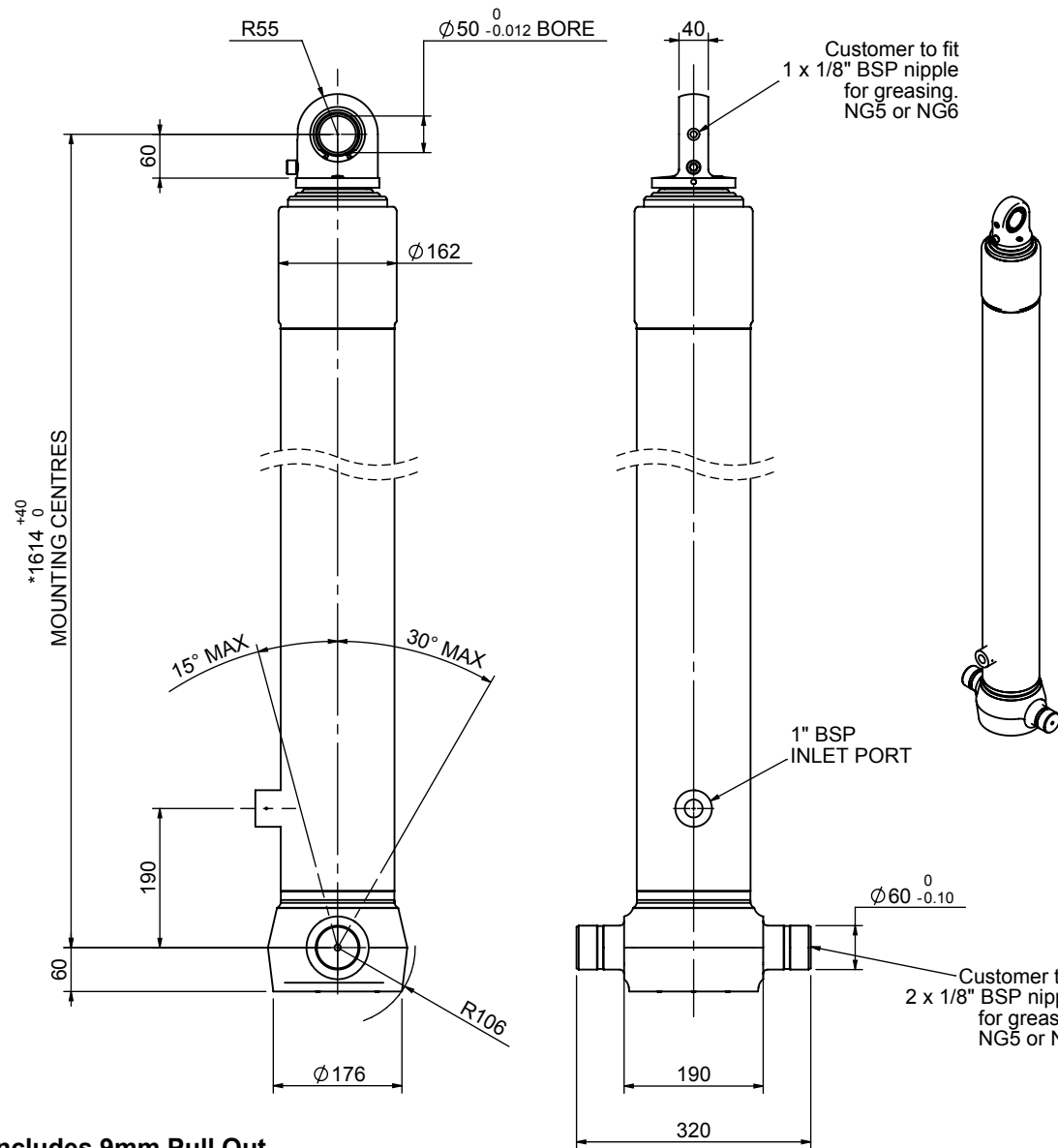


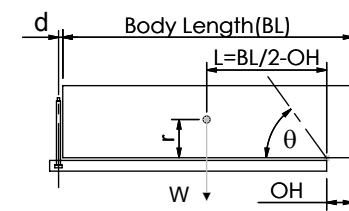
Cylinder 4 stage front end with spherical eye

CS130S45441B19A01



SPECIFICATION		TIPPING CAPACITY : 16-21 TONNES***		
Stage	Diameter	Length	Stroke	Swept Volume
-	-	-	-	-
-	-	-	-	-
0	155	1575	-	-
1	136	1540	1338	19
2	117	1540	1362	15
3	98	1540	1367	10
4	79	1540	1372	7
Total (+5/-10)			5439	51
Final stroke reduced by	0	Priming Volume		14
Cylinder Mass (Kg)	138	Total Volume (Litres)		65
Maximum Pressure (Bar)	190	Max. first stage thrust		200 KN

***TIPPING CAPACITY AT WORKING PRESSURE



BODY LENGTH (BL)					OH	
7100	7350	7600				
17	47°	16	45°	16	44°	150
18	49°	18	47°	17	46°	450
21	52°	20	50°	19	48°	750

d = 0; r = 750; Working Pressure 120 bar

For guidance only;
Higher working pressures and tipping capacities may be possible.
To check your application email - applications@edbro.co.uk

NOTES

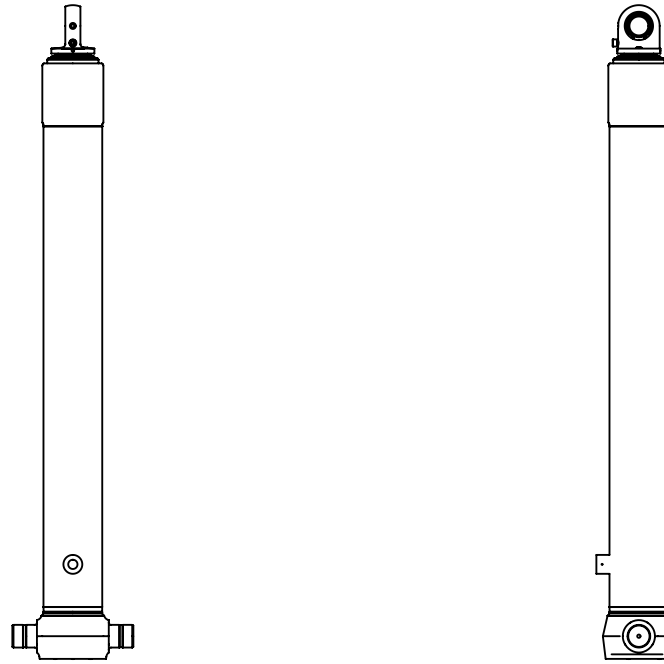
1. This cylinder is for lifting purposes only and side load conditions should be avoided
2. Cylinder is painted in primer paint to RAL5013
3. Refer to www.edbro.com for;-
 - Bracket details
 - Installation instructions that must be observed
 - Correct oil selection
 - An explanation of tipping capacity

*Includes 9mm Pull Out.
Last Stage Chrome Plated



Edbro plc
Nelson Street, Bolton, England, BL3 2JJ
Tel +44 (0) 1204 528888 Fax +44 (0) 1204 531957
Email: postmaster@edbro.com Web: www.edbro.com

Technical Specifications are subject to change without notice
Date Created/Updated: 18 July 2012
Refer www.edbro.com to confirm latest specification
All dimensions are in 'mm', unless otherwise stated



CS130S45441B19A01