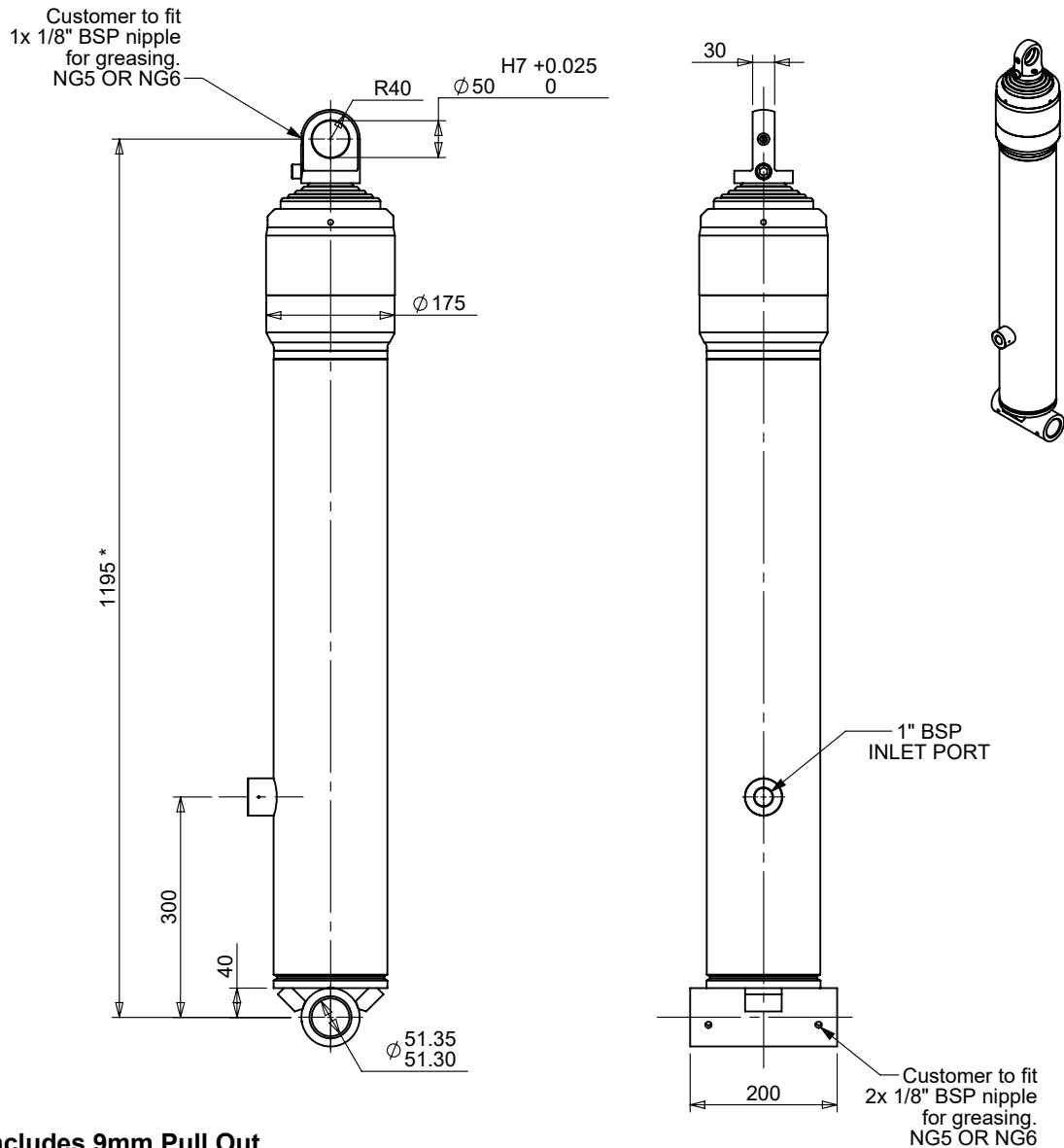


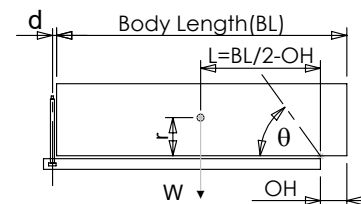
# Cylinder 5 stage with plain eye & spherical rod end

## CS13EE504218B523



| SPECIFICATION           |          | TIPPING CAPACITY : SEE BELOW*** |        |              |
|-------------------------|----------|---------------------------------|--------|--------------|
| Stage                   | Diameter | Length                          | Stroke | Swept Volume |
| 0                       | 155      | 1019                            | -      | -            |
| 1                       | 136      | 1040                            | 840    | 12           |
| 2                       | 117      | 1040                            | 862    | 9            |
| 3                       | 98       | 1040                            | 867    | 7            |
| 4                       | 79       | 1040                            | 872    | 4            |
| 5                       | 63       | 1040                            | 777    | 2            |
| Total (+5/-10)          |          |                                 | 4218   | 34           |
| Final stroke reduced by | 0        | Priming Volume                  |        | 11           |
| Cylinder Mass (kg)      | 100      | Total Volume (Litres)           |        | 45           |
| Maximum Pressure (Bar)  | 200      | Max. first stage thrust         |        | 225 kN       |

### \*\*\*TIPPING CAPACITY AT WORKING PRESSURE



| BODY LENGTH (BL) |     |      |     |      |     | OH  |
|------------------|-----|------|-----|------|-----|-----|
| 5450             |     | 5723 |     | 5995 |     |     |
| 21               | 48° | 20   | 45° | 19   | 43° | 150 |
| 26               | 51° | 24   | 48° | 22   | 46° | 450 |
| 35               | 55° | 30   | 51° | 26   | 48° | 750 |

d = 0; r = 900; Working Pressure 194 bar

### For guidance only;

Higher working pressures and tipping capacities may be possible.  
To check your application email - [applications@edbro.co.uk](mailto:applications@edbro.co.uk)

### NOTES

1. This cylinder is for lifting purposes only and side load conditions should be avoided
2. Cylinder is painted in primer paint to RAL5013
3. Refer to [www.edbro.com](http://www.edbro.com) for:-
  - Bracket details
  - Installation instructions that must be observed
  - Correct oil selection
  - An explanation of tipping capacity

**\*Includes 9mm Pull Out.  
All Stages Chrome Plated**



**JOST UK Ltd**  
Edbro House, Nelson Street, Bolton, BL3 2JJ, UK  
Tel +44 (0) 1204 528888 Fax +44 (0) 1204 531957  
Email: [sales@jost-world.com](mailto:sales@jost-world.com) Web: [www.edbro.com](http://www.edbro.com)

Technical Specifications are subject to change without notice  
Date Created/Updated: Monday, November 23, 2020  
Refer [www.edbro.com](http://www.edbro.com) to confirm latest specification  
All dimensions are in 'mm', unless otherwise stated