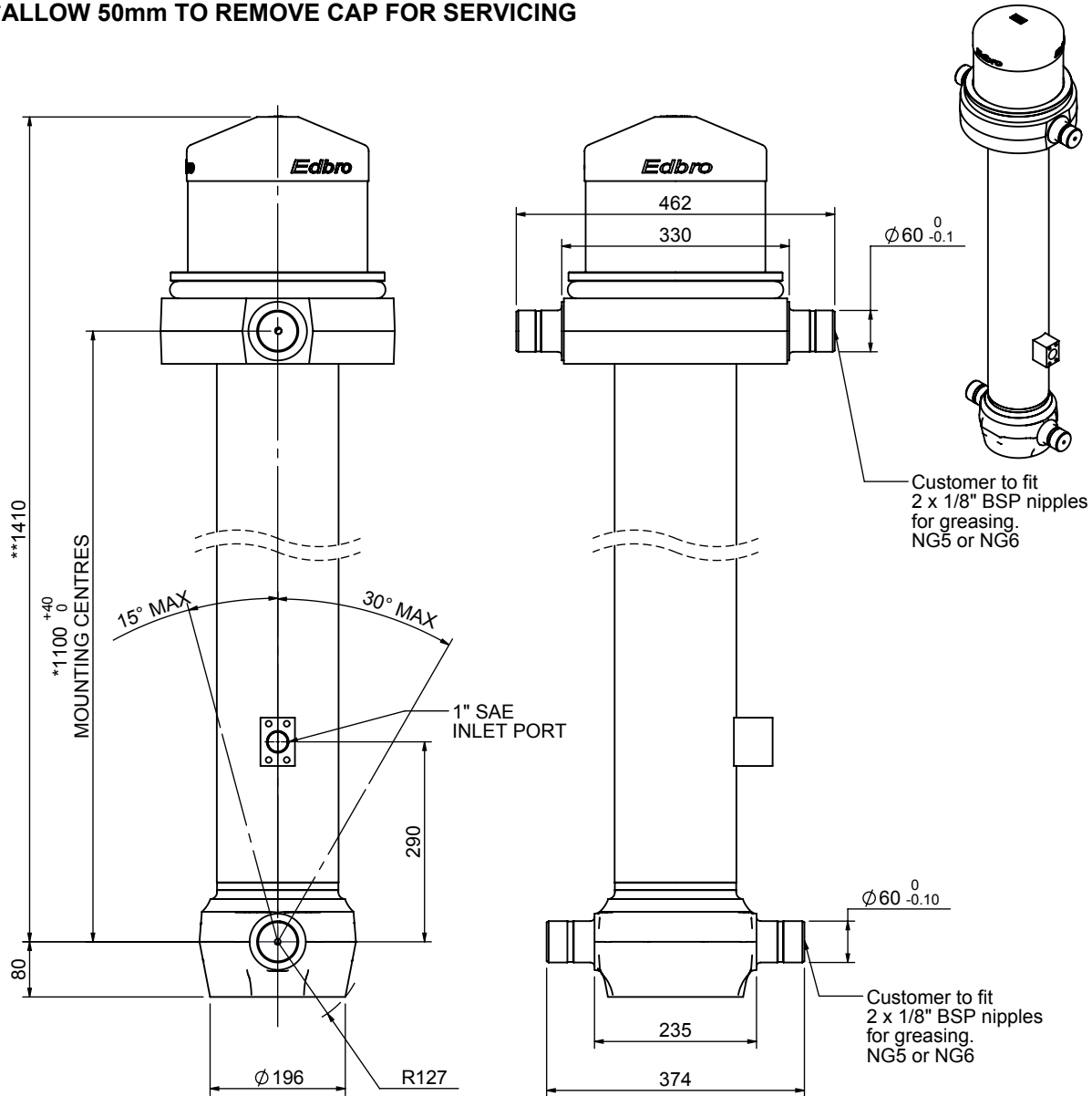


Cylinder 2 stage front end with outer cover

****ALLOW 50mm TO REMOVE CAP FOR SERVICING**



***Includes 11mm Pull Out. All Stages Hard Chromed**

CS150022272S29AANC

Stage	Diameter	Length	Stroke	Swept Volume
-	-	-	-	-
-	-	-	-	-
-	-	-	-	-
OUTER COVER		261	275	-
0	177	1375	-	-
1	155	1340	1125	21
2	136	1340	1147	17
			Total (+5/-10)	2272
Final stroke reduced by		0	Priming Volume	4.8
Cylinder Mass (Kg)		174	Total Volume (Litres)	42.8
Maximum Pressure (Bar)		190	Max. first stage thrust	230 KN

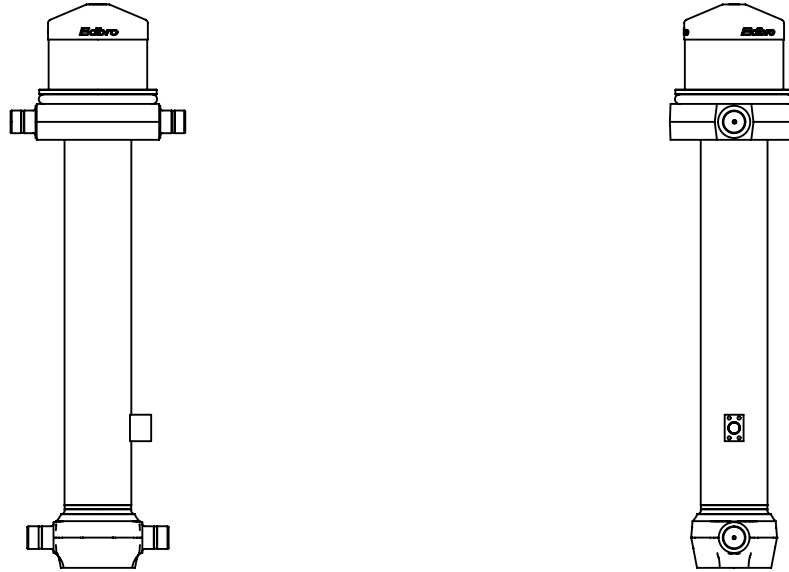
NOTES

1. This cylinder is for lifting purposes only and side load conditions should be avoided
2. Cylinder is painted in primer paint to RAL5013
3. Refer to www.edbro.com for:-
 - Bracket details
 - Installation instructions that must be observed
 - Correct oil selection
 - An explanation of tipping capacity

Edbro
SETTING THE INDUSTRY STANDARD

Edbro plc
Nelson Street, Bolton, England, BL3 2JJ
Tel +44 (0) 1204 528888 Fax +44 (0) 1204 531957
Email: postmaster@edbro.com Web: www.edbro.com

Technical Specifications are subject to change without notice
Date Created/Updated: 05 April 2013
Refer www.edbro.com to confirm latest specification
All dimensions are in 'mm', unless otherwise stated



CS150022272S29AANC