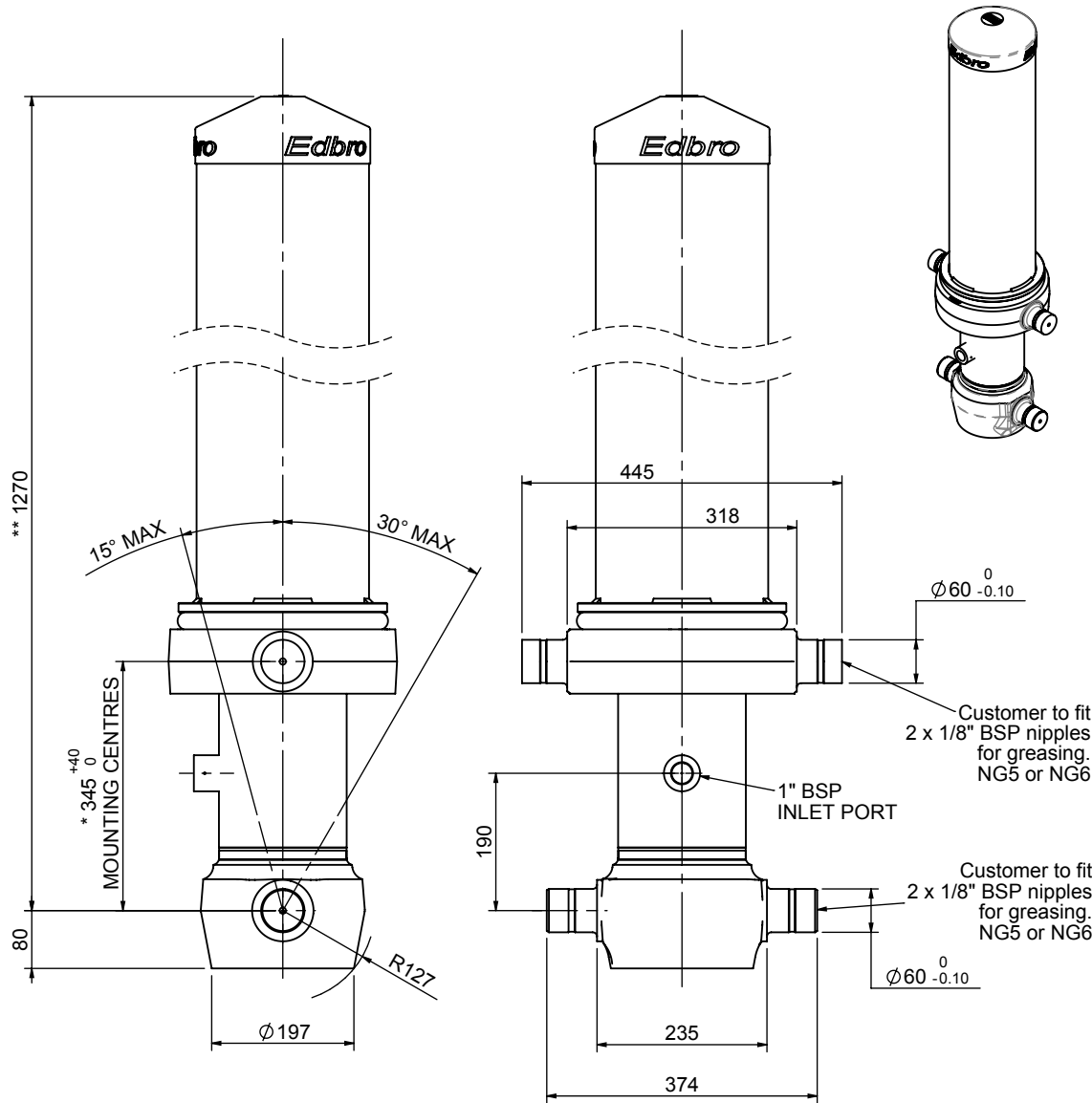


# Cylinder 4 stage front end with outer cover

**\*\*ALLOW 50mm TO REMOVE CAP FOR SERVICING**

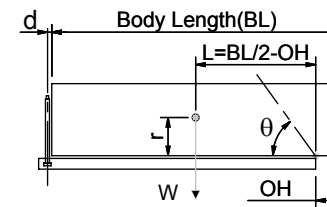


\*Includes 11mm Pull Out.

# CS150044006B19A11

| SPECIFICATION           |          | TIPPING CAPACITY : 37-57 TONNES*** |        |              |
|-------------------------|----------|------------------------------------|--------|--------------|
| Stage                   | Diameter | Length                             | Stroke | Swept Volume |
| -                       | -        | -                                  | -      | -            |
| OUTER COVER             | 239      | 890                                | -      | -            |
| 0                       | 177      | 1225                               | -      | -            |
| 1                       | 155      | 1190                               | 975    | 18           |
| 2                       | 136      | 1190                               | 997    | 14           |
| 3                       | 117      | 1190                               | 1012   | 11           |
| 4                       | 98       | 1190                               | 1017   | 8            |
| Total (+5/-10)          |          |                                    | 5068   | 51           |
| Final stroke reduced by | 0        | Priming Volume                     |        | 13           |
| Cylinder Mass (Kg)      | 200      | Total Volume (Litres)              |        | 64           |
| Maximum Pressure (Bar)  | 190      | Max. first stage thrust            |        | 225 KN       |

### \*\*\*TIPPING CAPACITY AT WORKING PRESSURE



| BODY LENGTH (BL) |      |      |     |    |     | OH  |
|------------------|------|------|-----|----|-----|-----|
| 5250             | 5500 | 5750 |     |    |     |     |
| 40               | 44°  | 38   | 42° | 37 | 40° | 150 |
| 46               | 47°  | 43   | 45° | 41 | 43° | 450 |
| 57               | 51°  | 52   | 48° | 48 | 45° | 750 |

$d = 229$ ;  $r = 750$ ; Working Pressure 165 bar

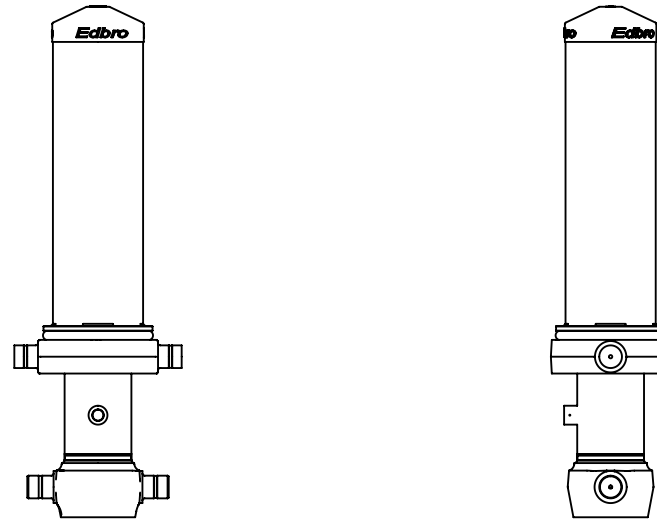
### For guidance only;

Higher working pressures and tipping capacities may be possible.

To check your application email - [applications@edbro.co.uk](mailto:applications@edbro.co.uk)

### NOTES

1. This cylinder is for lifting purposes only and side load conditions should be avoided
2. Cylinder is painted in primer paint to RAL5013
3. Refer to [www.edbro.com](http://www.edbro.com) for:-
  - Bracket details
  - Installation instructions that must be observed
  - Correct oil selection
  - An explanation of tipping capacity



CS150044006B19A11