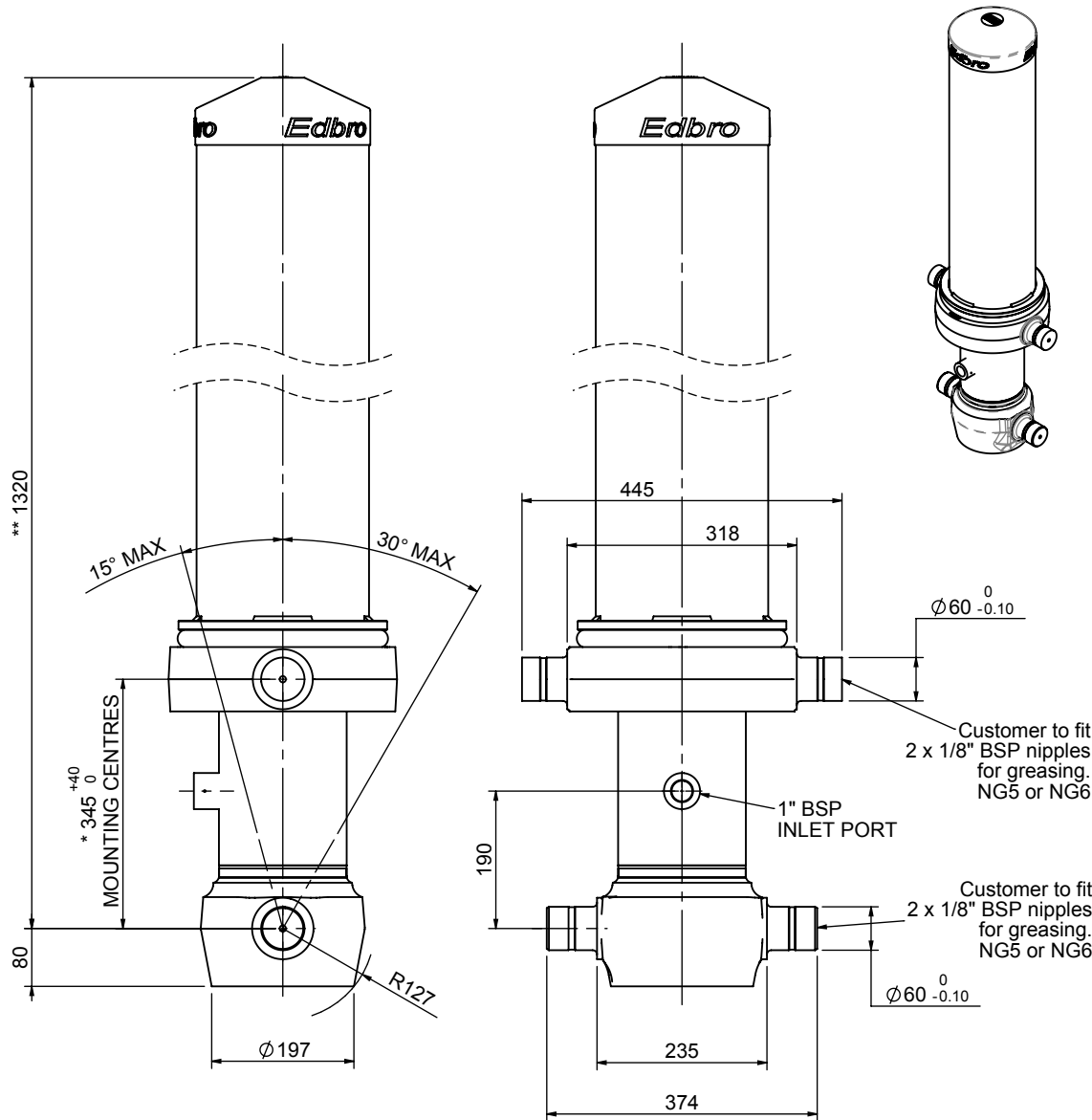


# Cylinder 4 stage front end with outer cover

**\*\*ALLOW 50mm TO REMOVE CAP FOR SERVICING**

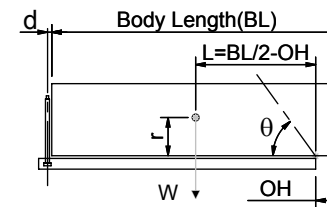


\*Includes 11mm Pull Out.

# CS150044206B19A11

SPECIFICATION		TIPPING CAPACITY : 37-57 TONNES***		
Stage	Diameter	Length	Stroke	Swept Volume
-	-	-	-	-
OUTER COVER	239	940	-	-
0	177	1275	-	-
1	155	1240	1025	19
2	136	1240	1047	15
3	117	1240	1062	11
4	98	1240	1067	8
Total (+5/-10)			5268	53
Final stroke reduced by	0	Priming Volume		14
Cylinder Mass (Kg)	206	Total Volume (Litres)		67
Maximum Pressure (Bar)	190	Max. first stage thrust		225 KN

## \*\*\*TIPPING CAPACITY AT WORKING PRESSURE



BODY LENGTH (BL)						OH
5400	5650	5900				
40	45°	38	43°	37	41°	150
46	48°	43	46°	41	44°	450
57	51°	52	49°	48	46°	750

d = 229; r = 750; Working Pressure 165 bar

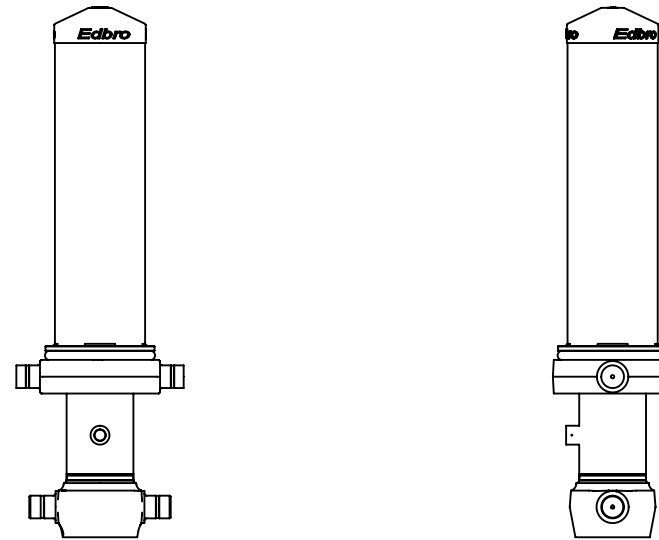
Tipping angle ( $\theta$ )  
Body + payload mass, W (tonne)

### For guidance only;

Higher working pressures and tipping capacities may be possible.  
To check your application email - [applications@edbro.co.uk](mailto:applications@edbro.co.uk)

## NOTES

1. This cylinder is for lifting purposes only and side load conditions should be avoided
2. Cylinder is painted in primer paint to RAL5013
3. Refer to [www.edbro.com](http://www.edbro.com) for:-
  - Bracket details
  - Installation instructions that must be observed
  - Correct oil selection
  - An explanation of tipping capacity



CS150044206B19A11