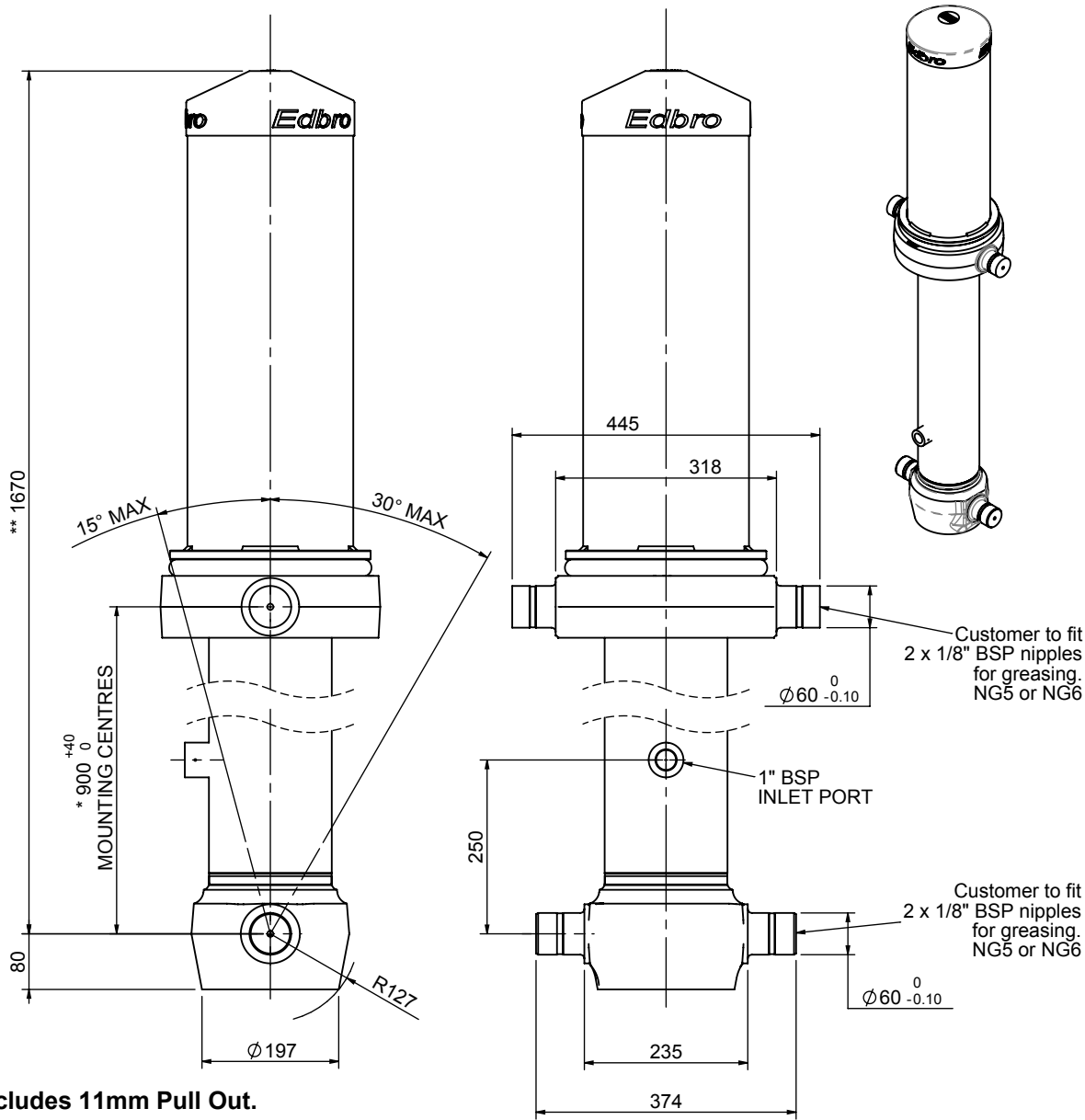


# Cylinder 4 stage front end with outer cover

**\*\*ALLOW 50mm TO REMOVE CAP FOR SERVICING**

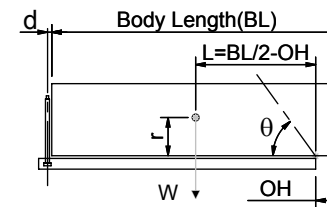


\*Includes 11mm Pull Out.

# CS150045606B25A14

SPECIFICATION		TIPPING CAPACITY : 36-52 TONNES***		
Stage	Diameter	Length	Stroke	Swept Volume
-	-	-	-	-
OUTER COVER	239	735	-	-
0	177	1625	-	-
1	155	1590	1375	26
2	136	1590	1397	20
3	117	1590	1412	15
4	98	1590	1417	11
Total (+5/-10)			7068	72
Final stroke reduced by	0	Priming Volume		18
Cylinder Mass (Kg)	233	Total Volume (Litres)		90
Maximum Pressure (Bar)	190	Max. first stage thrust		225 KN

## \*\*\*TIPPING CAPACITY AT WORKING PRESSURE



BODY LENGTH (BL)						OH
6750		7250		7750		
41	49°	38	45°	36	42°	150
45	52°	42	48°	39	44°	450
52	54°	47	50°	43	46°	750

d = 229; r = 750; Working Pressure 175 bar

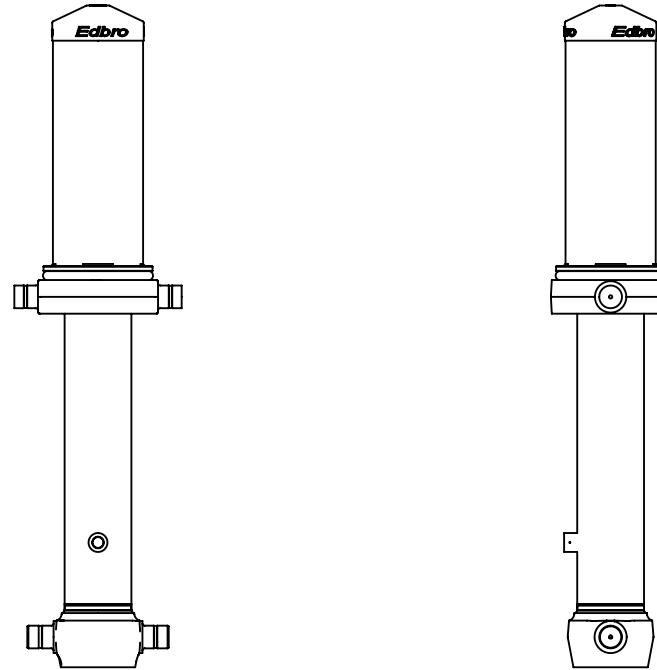
Tipping angle ( $\theta$ )  
Body + payload mass, W (tonne)

### For guidance only;

Higher working pressures and tipping capacities may be possible.  
To check your application email - [applications@edbro.co.uk](mailto:applications@edbro.co.uk)

### NOTES

1. This cylinder is for lifting purposes only and side load conditions should be avoided
2. Cylinder is painted in primer paint to RAL5013
3. Refer to [www.edbro.com](http://www.edbro.com) for;-
  - Bracket details
  - Installation instructions that must be observed
  - Correct oil selection
  - An explanation of tipping capacity



CS150045606B25A14