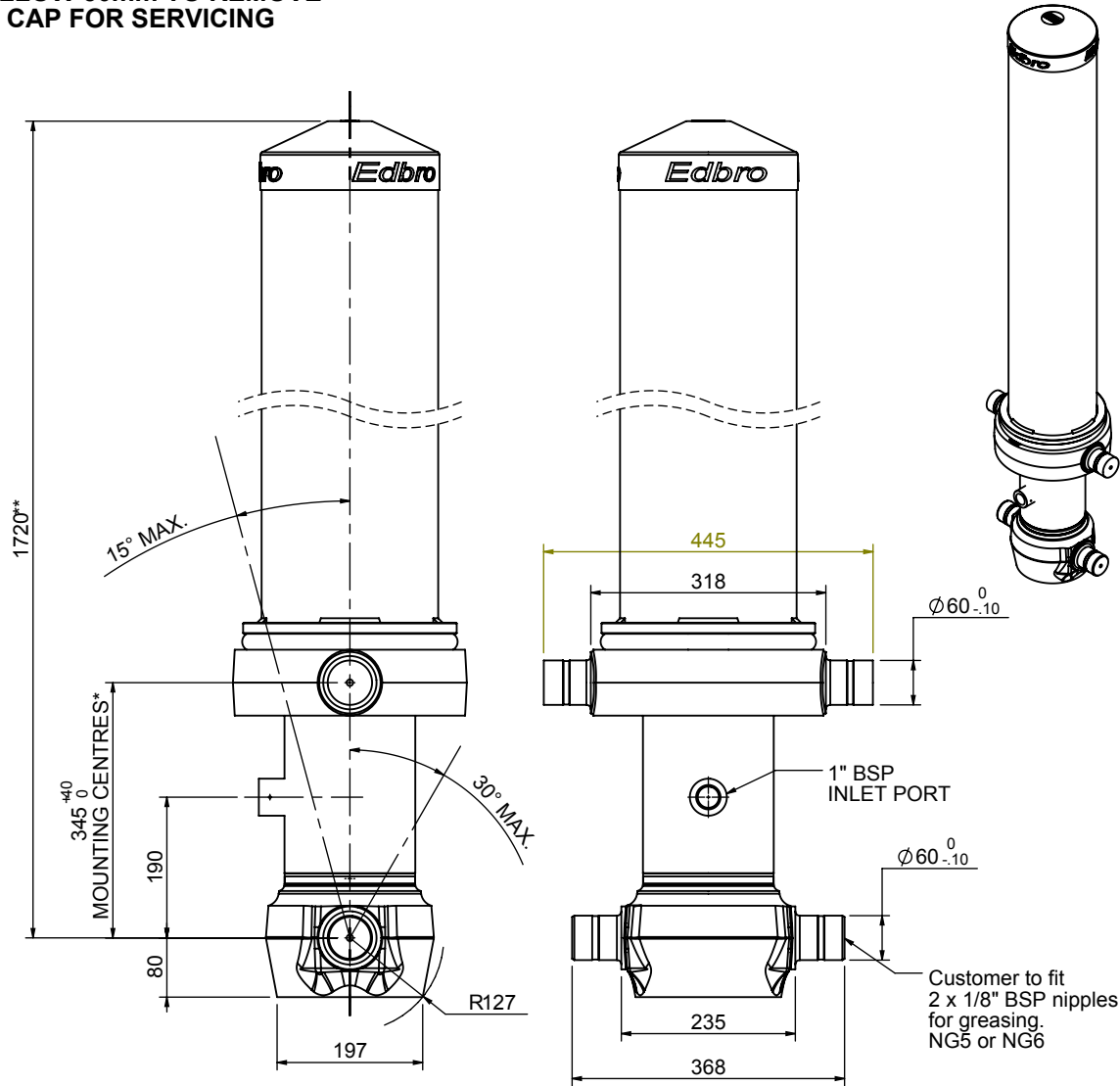


Cylinder 4 stage front end with Outer Cover

****ALLOW 50mm TO REMOVE CAP FOR SERVICING**



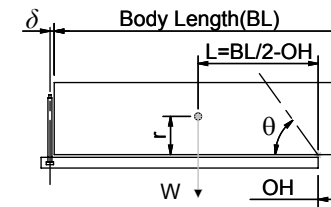
***Include 11mm Pull Out
All Stages Chrome Plated**

CS150045806B19A11C

SPECIFICATION		RATED CAPACITY : 36-51 TONNES***		
Stage	Diameter	Length	Stroke	Swept Volume
-	-	-	-	-
OUTER COVER	239	1340	-	-
0	177	1675	-	-
1	155	1640	1425	27
2	136	1640	1447	21
3	117	1640	1462	16
4	98	1640	1467	11
Final stroke reduced by	0	Total (+5/-10)	5801	75
Cylinder Mass (Kg)	254.69	Priming Volume	18.8	
Rated Pressure (Bar)	175	Total Volume (Litres)	93.8	
Maximum Pressure (Bar)	175	Max. first stage thrust	230 KN	

***TIPPING CAPACITY AT RATED PRESSURE

d = 229 ; r = 750



		BODY LENGTH (BL)				OH
		7000	7500	8000		
40	49°	38	45°	36	42°	150
45	51°	42	47°	39	44°	175
51	54°	46	49°	43	46°	200

Tipping angle (θ)
 Body + payload mass, W (tonne)

For guidance only;

Higher Rated Pressures may be possible. To check your application, email Edbro plc at <applications@edbro.co.uk>

NOTES

- If hydraulic pressure is used to limit overloading, the system relief valve must be set to the Rated Pressure unless agreed otherwise by Edbro
- The system relief valve can be set to Maximum Pressure if the load is limited by other means. See RATINGS page for advice
- This cylinder is for lifting purposes only and sload conditions must be avoided
- Cylinder is painted in primer paint to RAL5013
- See bracket options page BRKT01, BRKT02
- See installation instructions INSTALL01
- Use oil according to specification OIL01