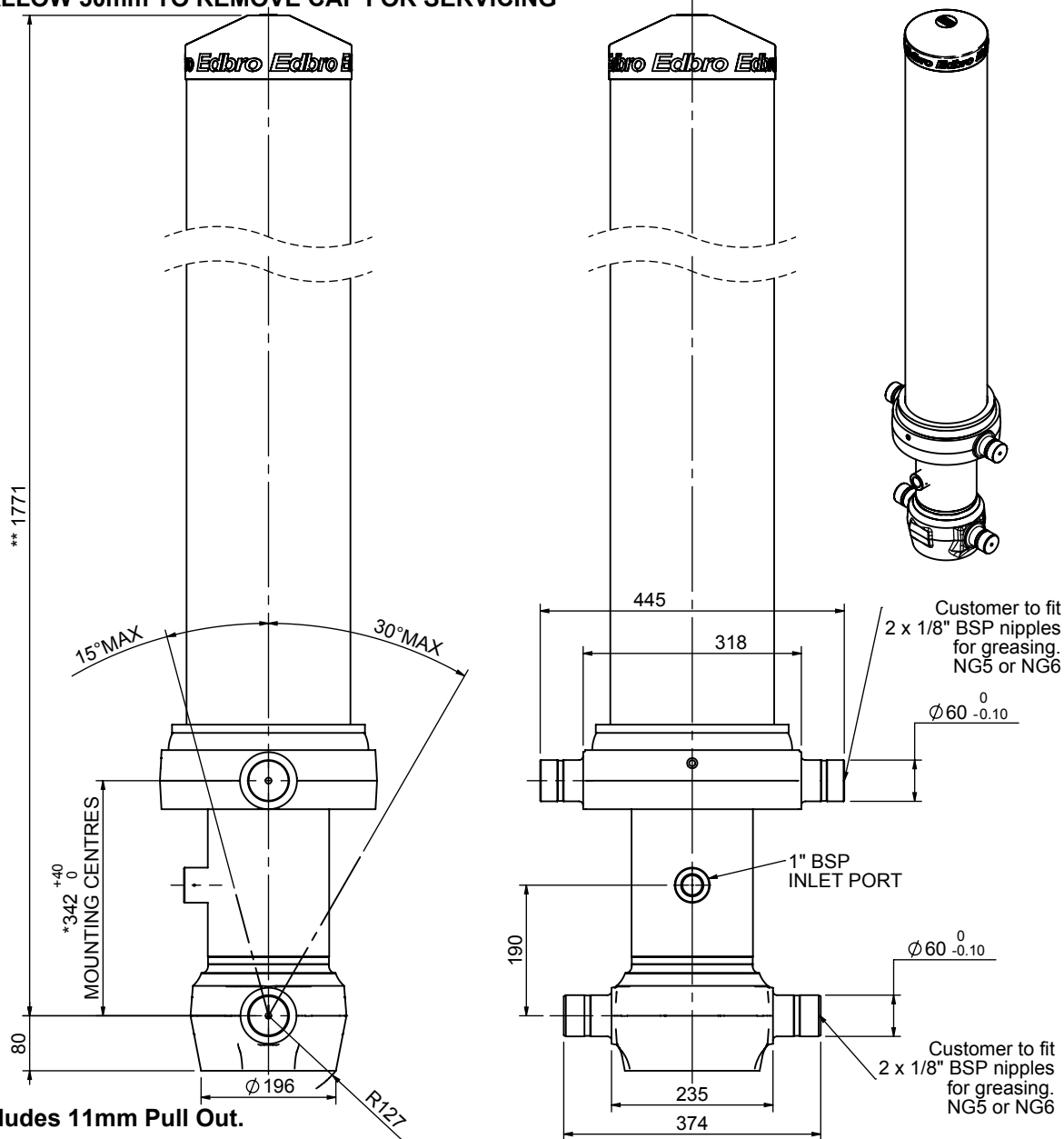


Cylinder 4 stage front end with outer cover

****ALLOW 50mm TO REMOVE CAP FOR SERVICING**

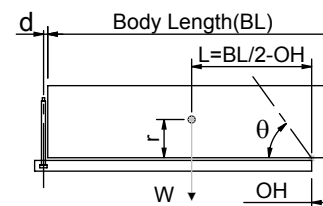


*Includes 11mm Pull Out.

CS150046006B19A11

SPECIFICATION		TIPPING CAPACITY : 36-50 TONNES***		
Stage	Diameter	Length	Stroke	Swept Volume
-	-	-	-	-
OUTER COVER	239	1390	-	-
0	177	1725	-	-
1	155	1690	1480	28
2	136	1690	1497	22
3	117	1690	1512	16
4	98	1690	1517	11
Total (+5/-10)			6006	77
Final stroke reduced by	0	Priming Volume		20
Cylinder Mass (Kg)	254	Total Volume (Litres)		97
Maximum Pressure (Bar)	190	Max. first stage thrust		225 KN

***TIPPING CAPACITY AT WORKING PRESSURE



BODY LENGTH (BL)						OH
7250	7750	8250				
40	49°	38	45°	36	42°	150
44	51°	41	47°	39	44°	450
50	53°	46	49°	42	46°	750

d = 229; r = 750; Working Pressure 175 bar

Tipping angle (θ)

Body + payload mass, W (tonne)

For guidance only;

Higher working pressures and tipping capacities may be possible.

To check your application email - applications@edbro.co.uk

NOTES

1. This cylinder is for lifting purposes only and side load conditions should be avoided
2. Cylinder is painted in primer paint to RAL5013
3. Refer to www.edbro.com for:-
 - Bracket details
 - Installation instructions that must be observed
 - Correct oil selection
 - An explanation of tipping capacity



JOST UK LTD

EDBRO Hse, Nelson Street, Bolton, England, BL3 2JJ
 Tel +44 (0) 1204 528888 Fax +44 (0) 1204 531957
 Email: sales@internet-world.com Web: www.edbro.com

Technical Specifications are subject to change without notice

Date Created/Updated: 17 November 2016

Refer www.edbro.com to confirm latest specification

All dimensions are in 'mm', unless otherwise stated