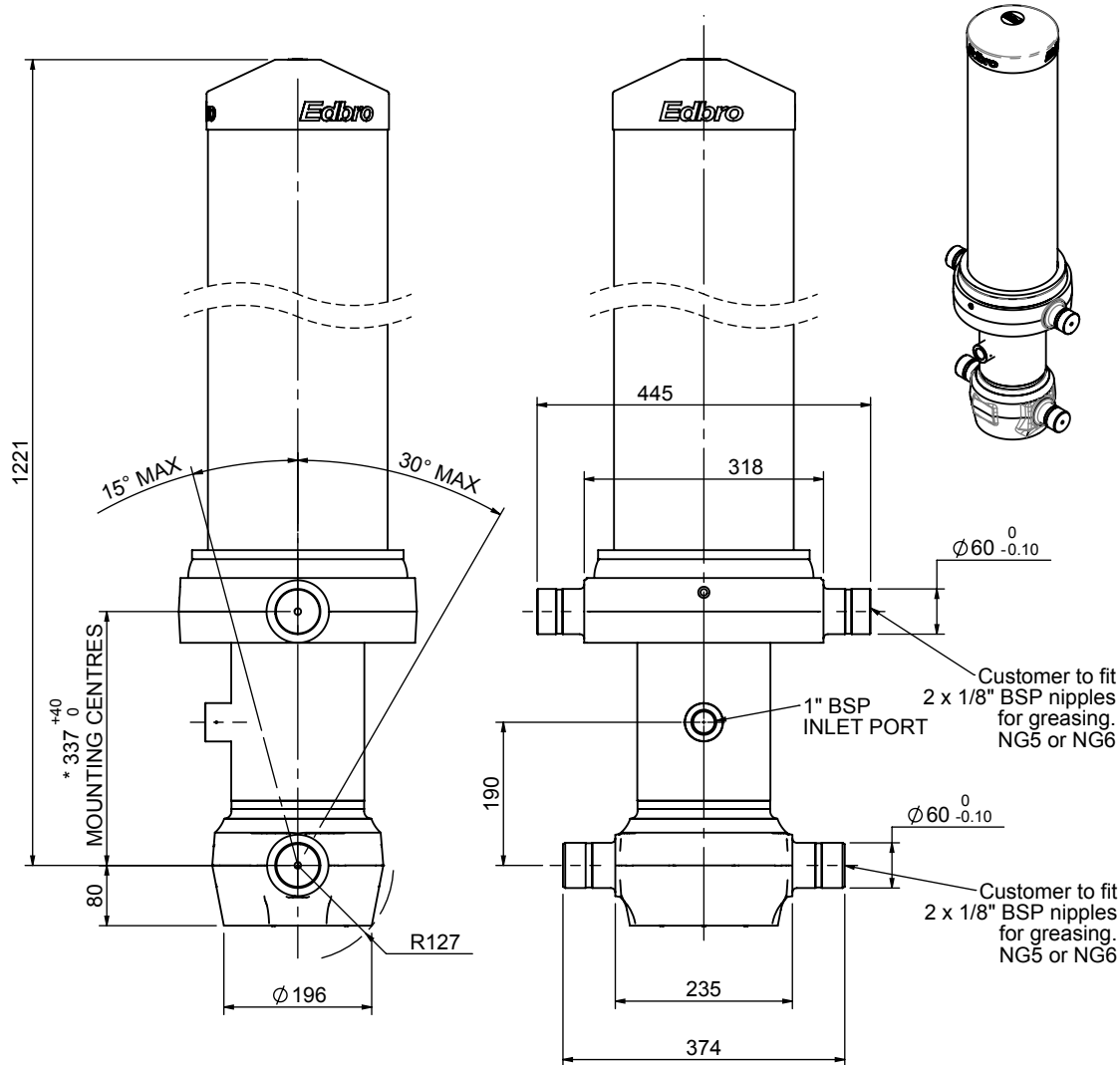


Cylinder 5 stage front end with outer cover

****ALLOW 50mm TO REMOVE CAP FOR SERVICING**

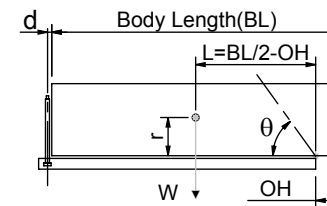


***Includes 7mm Pull Out. All Stages Chrome Plated**

CS150054778B19A31C

SPECIFICATION		TIPPING CAPACITY : 28-43 TONNES***		
Stage	Diameter	Length	Stroke	Swept Volume
OUTER COVER	239	845	-	-
0	177	1175	-	-
1	155	1140	930	18
2	136	1140	947	14
3	117	1140	962	10
4	98	1140	967	7
5	79	1140	972	5
Total (+5/-10)			4778	54
Final stroke reduced by	0	Priming Volume		12
Cylinder Mass (Kg)	200	Total Volume (Litres)		66
Maximum Pressure (Bar)	190	Max. first stage thrust		225 KN

***TIPPING CAPACITY AT WORKING PRESSURE



BODY LENGTH (BL)						OH
5970	6269	6567				
31	47°	30	44°	28	42°	150
36	49°	33	47°	31	44°	450
43	52°	39	49°	36	47°	750

$d = 229$; $r = 750$; Working Pressure 190 bar

Tipping angle (θ)

Body + payload mass, W (tonne)

For guidance only;

Higher working pressures and tipping capacities may be possible.

To check your application email - applications@edbro.co.uk

NOTES

1. This cylinder is for lifting purposes only and side load conditions should be avoided
2. Cylinder is painted in primer paint to RAL5013
3. Refer to www.edbro.com for;-
 - Bracket details
 - Installation instructions that must be observed
 - Correct oil selection
 - An explanation of tipping capacity



JOST UK Ltd
 Edbro House, Nelson Street, Bolton, England, BL3 2JJ
 Tel +44 (0) 1204 528888 Fax +44 (0) 1204 531957
 Email: sales@jost-world.com Web: www.edbro.com

Technical Specifications are subject to change without notice
 Date Created/Updated: 08 October 2020
 Refer www.edbro.com to confirm latest specification
 All dimensions are in 'mm', unless otherwise stated