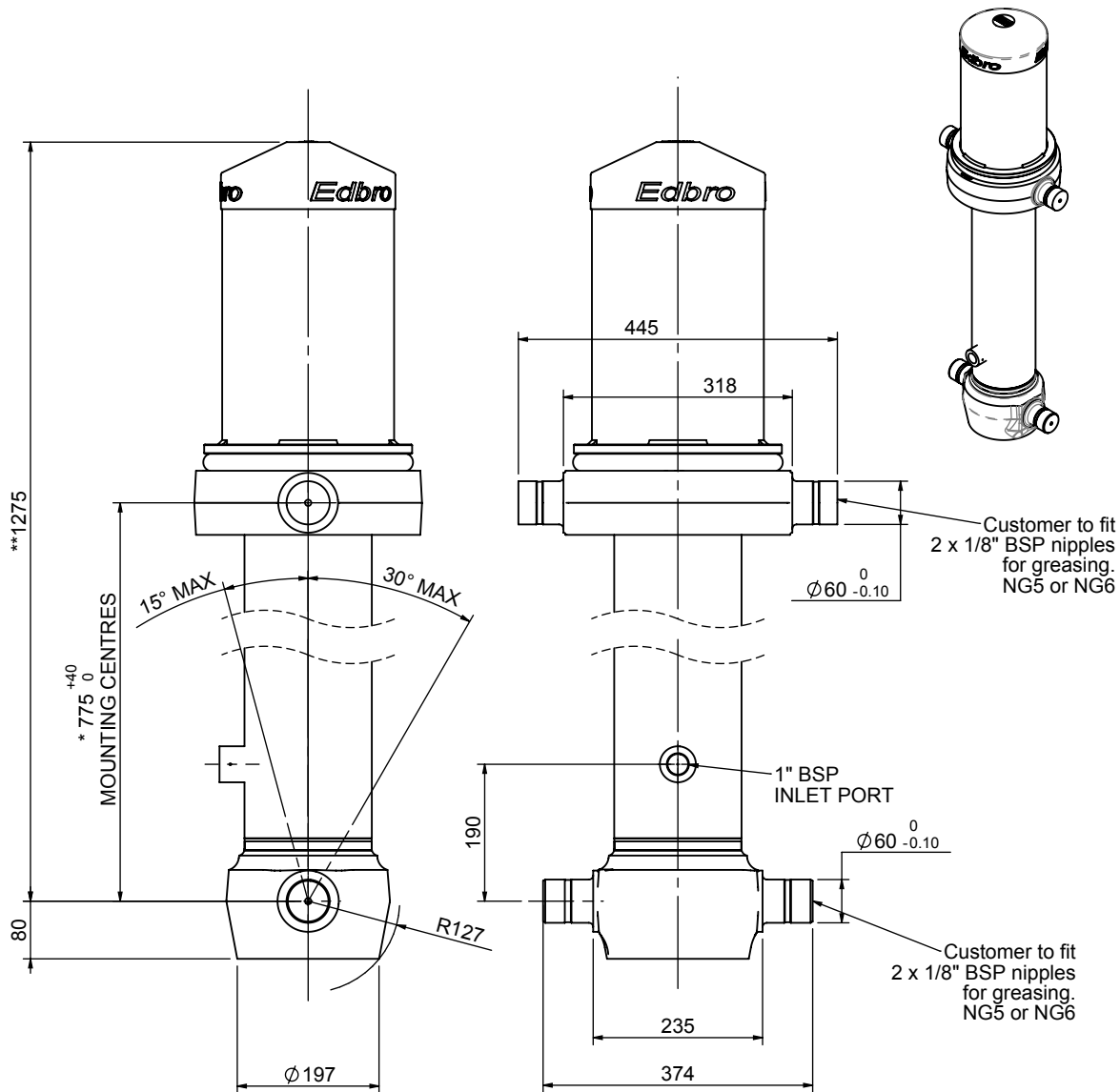


Cylinder 5 stage front end with outer cover

****ALLOW 50mm TO REMOVE CAP FOR SERVICING**

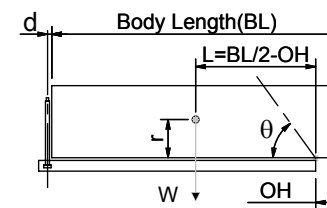


*Includes 11mm Pull Out.

CS150055027B19A13

| SPECIFICATION | | TIPPING CAPACITY : 26-38 TONNES*** | | |
|-------------------------|----------|------------------------------------|--------|--------------|
| Stage | Diameter | Length | Stroke | Swept Volume |
| OUTER COVER | 239 | 465 | - | - |
| 0 | 177 | 1225 | - | - |
| 1 | 155 | 1190 | 975 | 18 |
| 2 | 136 | 1190 | 997 | 14 |
| 3 | 117 | 1190 | 1012 | 11 |
| 4 | 98 | 1190 | 1017 | 8 |
| 5 | 79 | 1190 | 1022 | 5 |
| Total (+5/-10) | | | 5023 | 56 |
| Final stroke reduced by | 0 | Priming Volume | | 12 |
| Cylinder Mass (Kg) | 199 | Total Volume (Litres) | | 68 |
| Maximum Pressure (Bar) | 190 | Max. first stage thrust | | 225 KN |

***TIPPING CAPACITY AT WORKING PRESSURE



| | | BODY LENGTH (BL) | | | | OH |
|----|-----|------------------|------|------|-----|-----|
| | | 6250 | 6500 | 6750 | | |
| 28 | 47° | 27 | 45° | 26 | 44° | 150 |
| 32 | 50° | 30 | 47° | 29 | 46° | 450 |
| 38 | 53° | 35 | 50° | 33 | 48° | 750 |

d = 229; r = 750; Working Pressure 175 bar

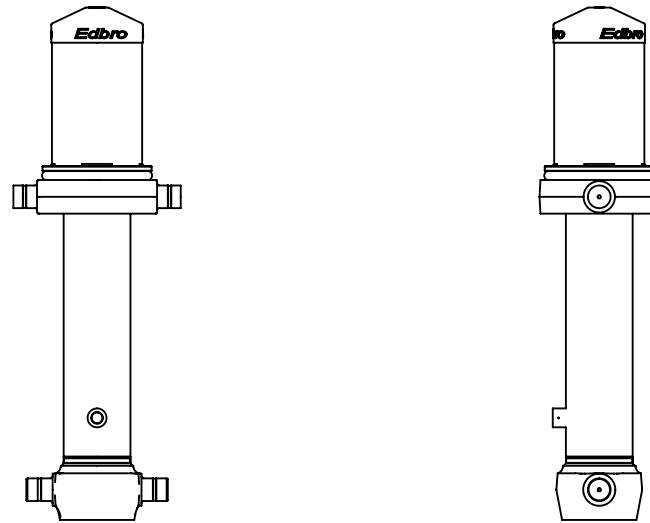
Tipping angle (θ)
Body + payload mass, W (tonne)

For guidance only;

Higher working pressures and tipping capacities may be possible.
To check your application email - applications@edbro.co.uk

NOTES

1. This cylinder is for lifting purposes only and side load conditions should be avoided
2. Cylinder is painted in primer paint to RAL5013
3. Refer to www.edbro.com for:-
 - Bracket details
 - Installation instructions that must be observed
 - Correct oil selection
 - An explanation of tipping capacity



CS150055027B19A13