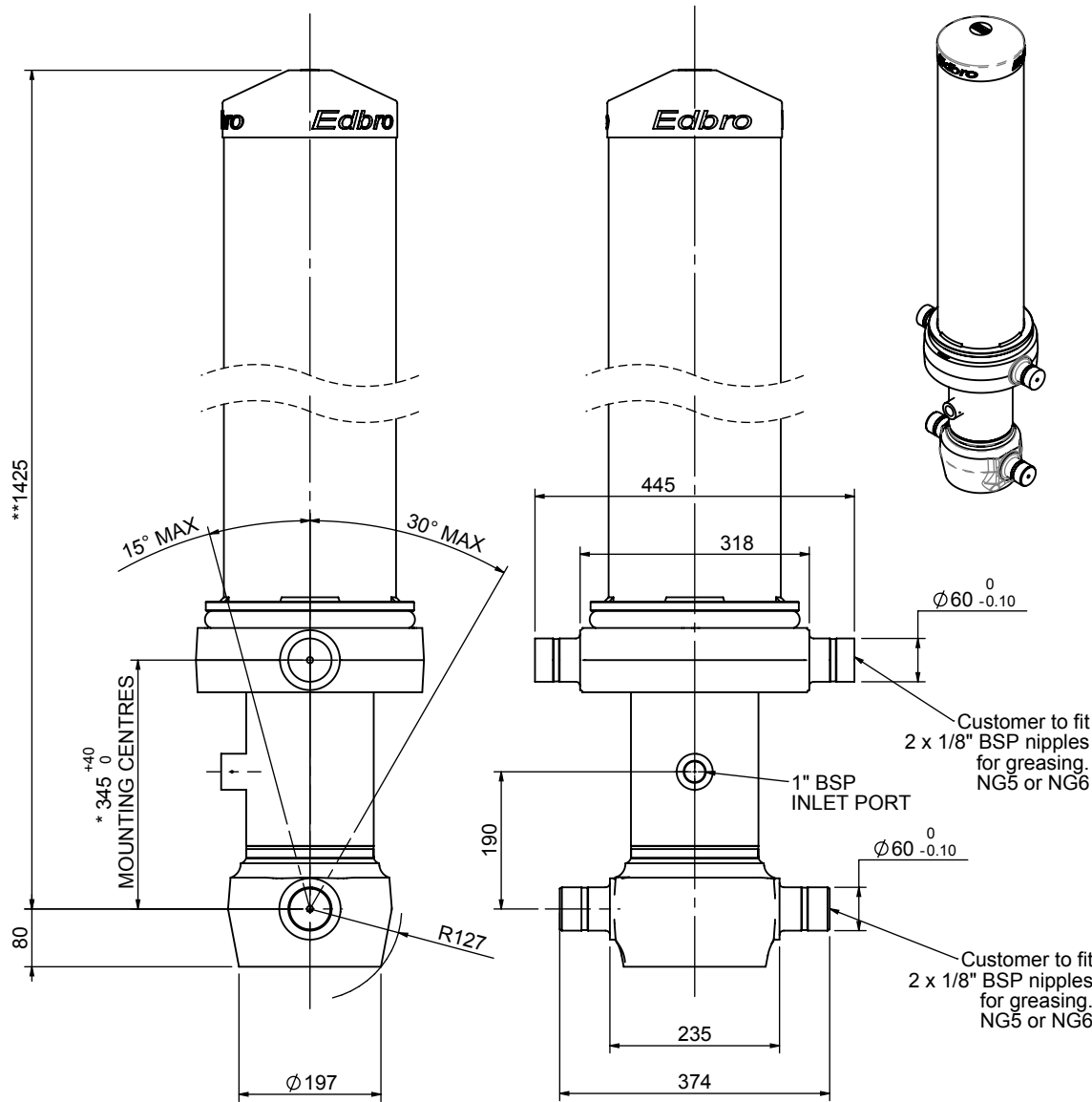


Cylinder 5 stage front end with outer cover

****ALLOW 50mm TO REMOVE CAP FOR SERVICING**

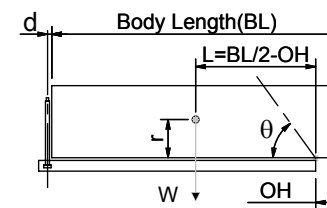


*Includes 11mm Pull Out.

CS150055777B19A11

| SPECIFICATION | | TIPPING CAPACITY : 24-35 TONNES*** | | |
|-------------------------|----------|------------------------------------|--------|--------------|
| Stage | Diameter | Length | Stroke | Swept Volume |
| OUTER COVER | 239 | 1045 | - | - |
| 0 | 177 | 1375 | - | - |
| 1 | 155 | 1340 | 1125 | 21 |
| 2 | 136 | 1340 | 1147 | 17 |
| 3 | 117 | 1340 | 1162 | 12 |
| 4 | 98 | 1340 | 1167 | 9 |
| 5 | 79 | 1340 | 1172 | 6 |
| Total (+5/-10) | | | 5773 | 65 |
| Final stroke reduced by | 0 | Priming Volume | | 14 |
| Cylinder Mass (Kg) | 227 | Total Volume (Litres) | | 79 |
| Maximum Pressure (Bar) | 190 | Max. first stage thrust | 225 KN | |

***TIPPING CAPACITY AT WORKING PRESSURE



| BODY LENGTH (BL) | | | | | | OH |
|------------------|------|------|-----|----|-----|-----|
| 7000 | 7500 | 8000 | | | | |
| 27 | 48° | 26 | 45° | 24 | 42° | 150 |
| 31 | 51° | 28 | 47° | 26 | 44° | 450 |
| 35 | 53° | 32 | 49° | 29 | 46° | 750 |

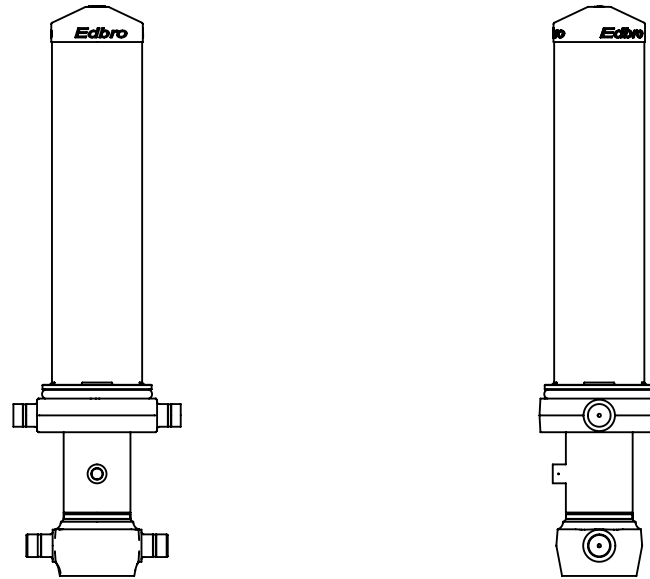
d = 229; r = 750; Working Pressure 175 bar

For guidance only;

Higher working pressures and tipping capacities may be possible.
To check your application email - applications@edbro.co.uk

NOTES

1. This cylinder is for lifting purposes only and side load conditions should be avoided
2. Cylinder is painted in primer paint to RAL5013
3. Refer to www.edbro.com for:-
 - Bracket details
 - Installation instructions that must be observed
 - Correct oil selection
 - An explanation of tipping capacity



CS150055777B19A11