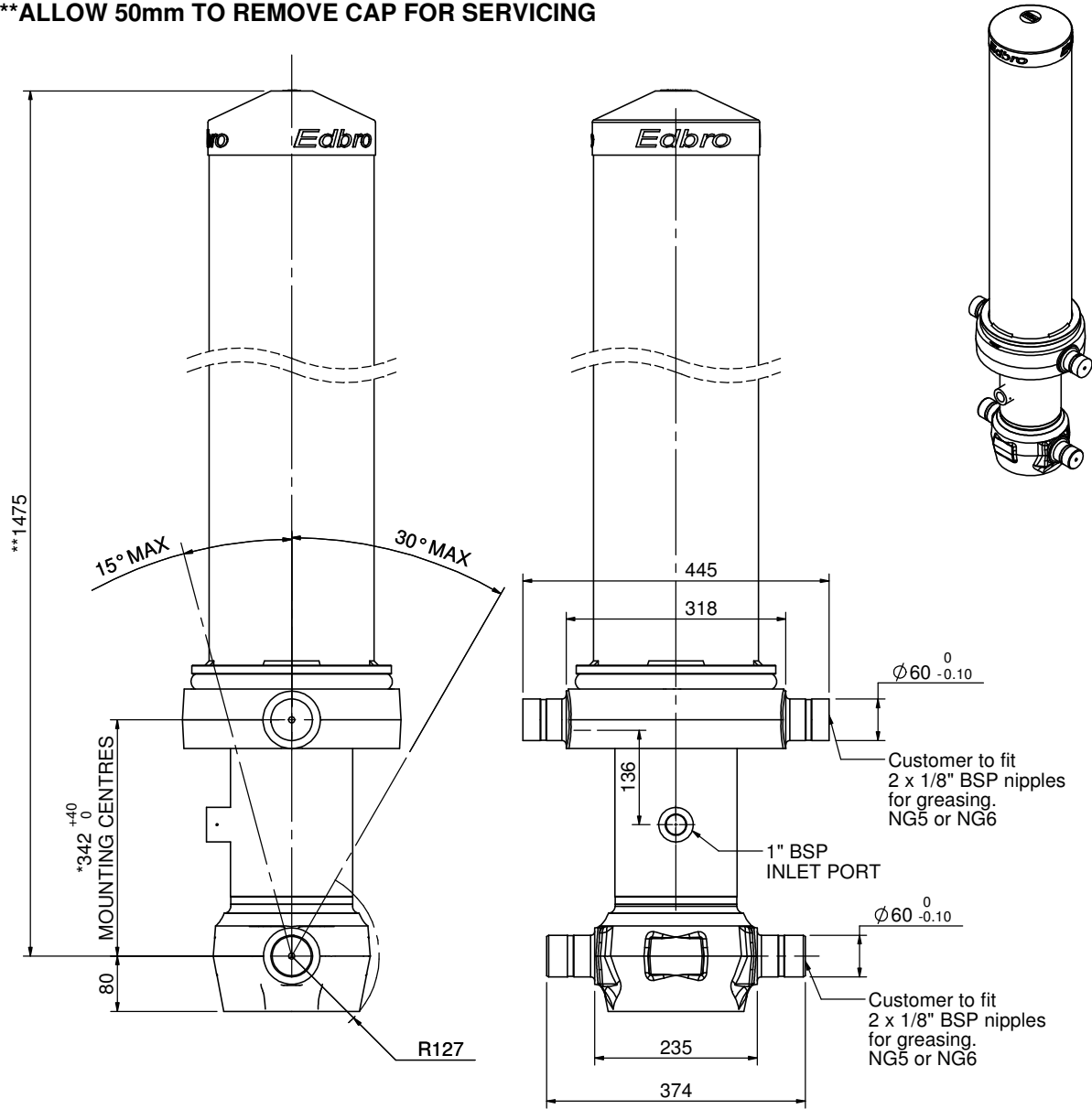


Cylinder 5 stage front end with outer cover

****ALLOW 50mm TO REMOVE CAP FOR SERVICING**

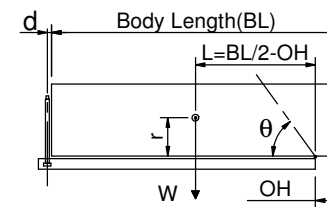


*Includes 11mm Pull Out. None

CS150056028B19A11

SPECIFICATION		TIPPING CAPACITY : 24-35 TONNES***		
Stage	Diameter	Length	Stroke	Swept Volume
OUTER COVER	239	1095	-	-
0	177	1425	-	-
1	155	1390	1175	22
2	136	1390	1197	17
3	117	1390	1212	13
4	98	1390	1217	9
5	79	1390	1222	6
Total (+5/-10)			6023	67
Final stroke reduced by	0	Priming Volume		15
Cylinder Mass (Kg)	231	Total Volume (Litres)		82
Maximum Pressure (Bar)	190	Max. first stage thrust		230 KN

***TIPPING CAPACITY AT WORKING PRESSURE



BODY LENGTH (BL)						OH
7250		7750		8250		
27	49°	26	45°	24	43°	150
30	51°	28	47°	26	44°	450
35	54°	31	50°	29	46°	750

$d = 229$; $r = 750$; Working Pressure 175 bar

Tipping angle (θ)

Body + payload mass, W (tonne)

For guidance only;

Higher working pressures and tipping capacities may be possible.

To check your application email - applications@edbro.co.uk

NOTES

1. This cylinder is for lifting purposes only and side load conditions should be avoided
2. Cylinder is painted in primer paint to RAL5013
3. Refer to www.edbro.com for:-
 - Bracket details
 - Installation instructions that must be observed
 - Correct oil selection
 - An explanation of tipping capacity