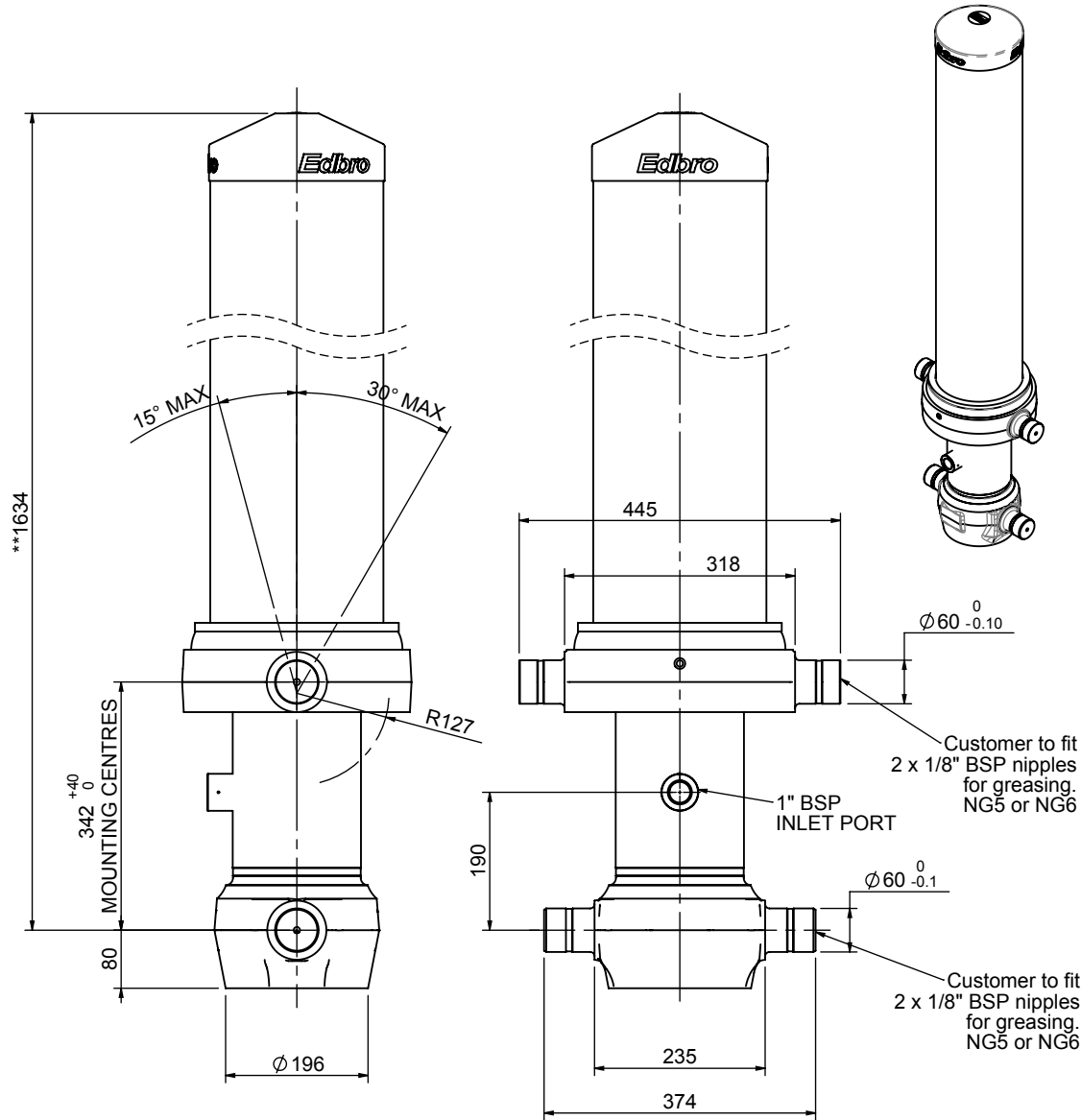


# Cylinder 5 stage front end with outer cover

**\*\*ALLOW 50mm TO REMOVE CAP FOR SERVICING**

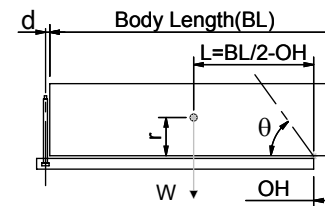


**\*Includes 11mm Pull Out.  
All Stages Chrome Plated**

# CS150056527B19F31C

SPECIFICATION		TIPPING CAPACITY : 26-38 TONNES***		
Stage	Diameter	Length	Stroke	Swept Volume
OUTER COVER	239	1255	-	-
0	177	1575	-	-
1	155	1540	1325	25
2	136	1540	1347	20
3	117	1540	1362	15
4	98	1540	1367	10
5	79	1540	1122	6
Total (+5/-10)			6523	76
Final stroke reduced by	250	Priming Volume		15
Cylinder Mass (Kg)	249	Total Volume (Litres)		91
Maximum Pressure (Bar)	175	Max. first stage thrust		230 KN

## \*\*\*TIPPING CAPACITY AT WORKING PRESSURE



BODY LENGTH (BL)						OH
8000	8500	9000				
28	48°	27	45°	25	42°	150
31	50°	29	47°	27	44°	450
36	52°	32	48°	30	45°	750

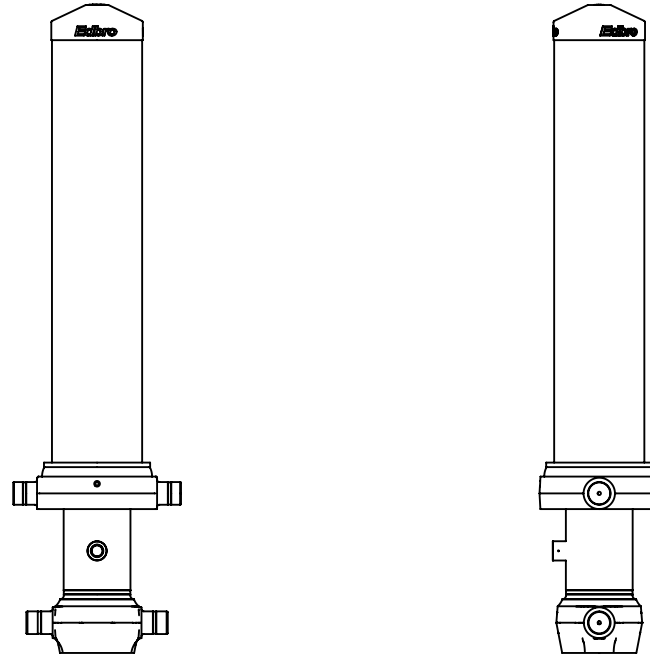
d = 229; r = 750; Working Pressure 175 bar

### For guidance only;

Higher working pressures and tipping capacities may be possible.  
To check your application email - [applications@edbro.co.uk](mailto:applications@edbro.co.uk)

## NOTES

1. This cylinder is for lifting purposes only and side load conditions should be avoided
2. Cylinder is painted in primer paint to RAL5013
3. Refer to [www.edbro.com](http://www.edbro.com) for:-
  - Bracket details
  - Installation instructions that must be observed
  - Correct oil selection
  - An explanation of tipping capacity



CS150056527B19F31C