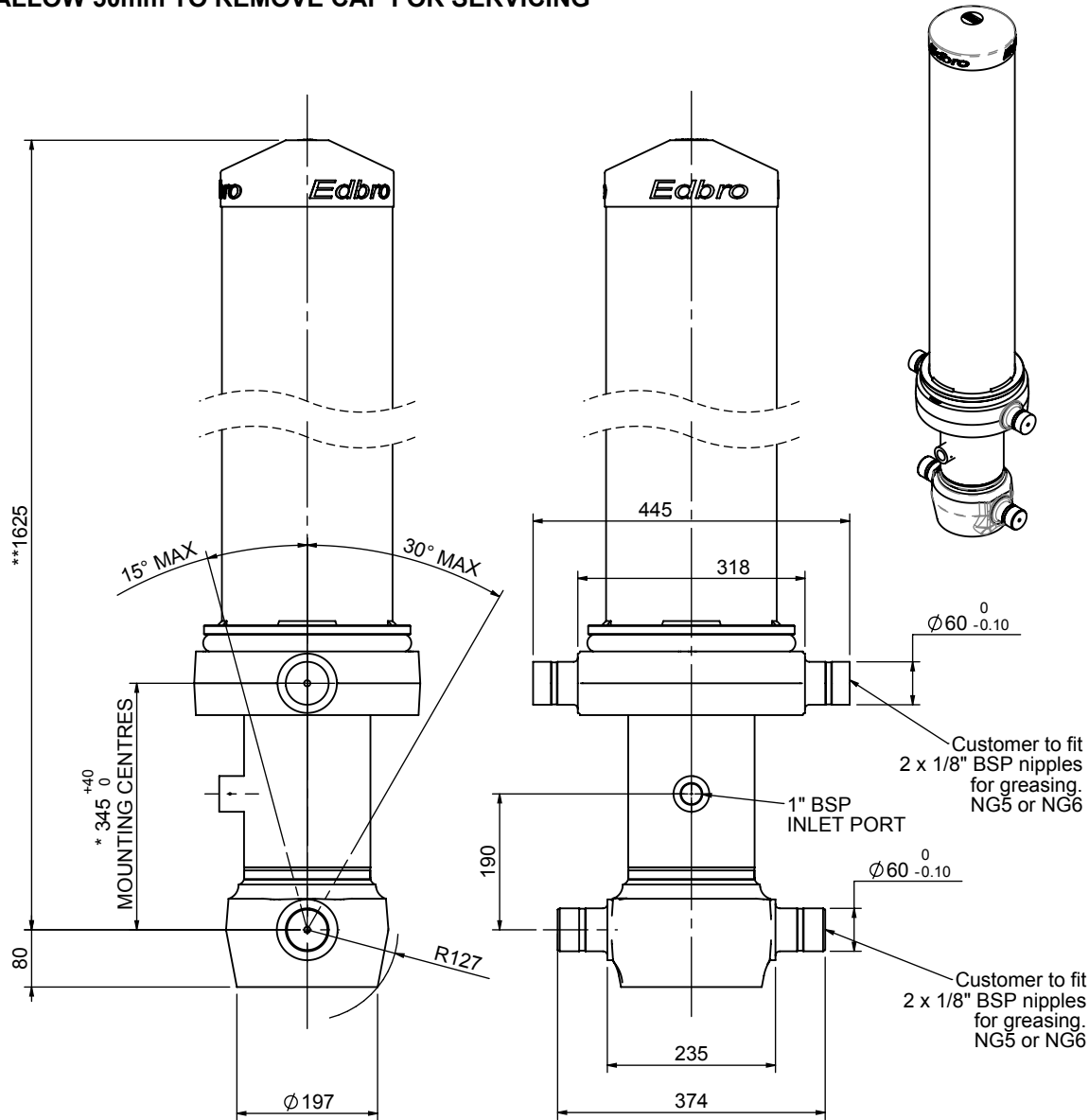


Cylinder 5 stage front end with outer cover

****ALLOW 50mm TO REMOVE CAP FOR SERVICING**

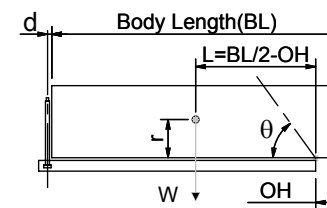


***Includes 11mm Pull Out. All Stages Chrome Plated**

CS150056777B19A11C

SPECIFICATION		TIPPING CAPACITY : 24-33 TONNES***		
Stage	Diameter	Length	Stroke	Swept Volume
OUTER COVER	239	1245	-	-
0	177	1575	-	-
1	155	1540	1325	25
2	136	1540	1347	20
3	117	1540	1362	15
4	98	1540	1367	10
5	79	1540	1372	7
Total (+5/-10)			6773	77
Final stroke reduced by	0	Priming Volume		16
Cylinder Mass (Kg)	252	Total Volume (Litres)		93
Maximum Pressure (Bar)	190	Max. first stage thrust		225 KN

***TIPPING CAPACITY AT WORKING PRESSURE



BODY LENGTH (BL)						OH
8000	8500	9000				
27	50°	26	47°	24	44°	150
30	52°	28	49°	26	46°	450
33	54°	30	51°	28	47°	750

$d = 229; r = 750; \text{Working Pressure } 175 \text{ bar}$

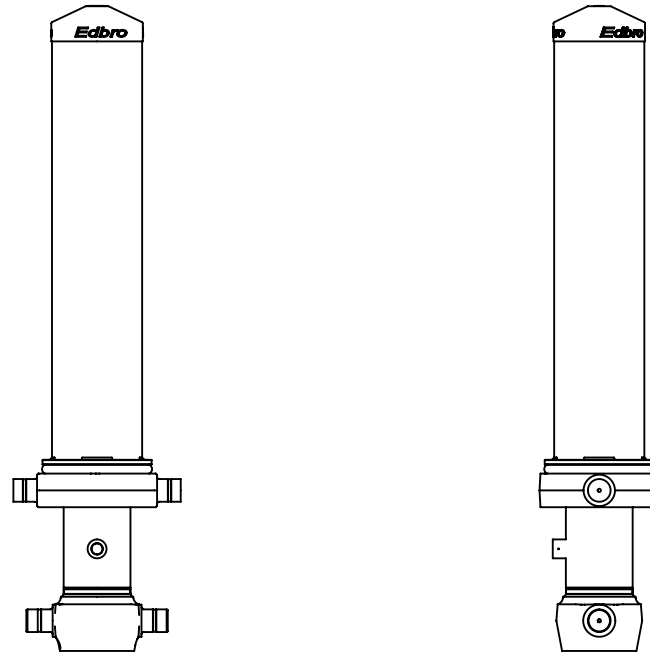
Tipping angle (θ)
Body + payload mass, W (tonne)

For guidance only;

Higher working pressures and tipping capacities may be possible.
To check your application email - applications@edbro.co.uk

NOTES

1. This cylinder is for lifting purposes only and side load conditions should be avoided
2. Cylinder is painted in primer paint to RAL5013
3. Refer to www.edbro.com for:-
 - Bracket details
 - Installation instructions that must be observed
 - Correct oil selection
 - An explanation of tipping capacity



CS150056777B19A11C