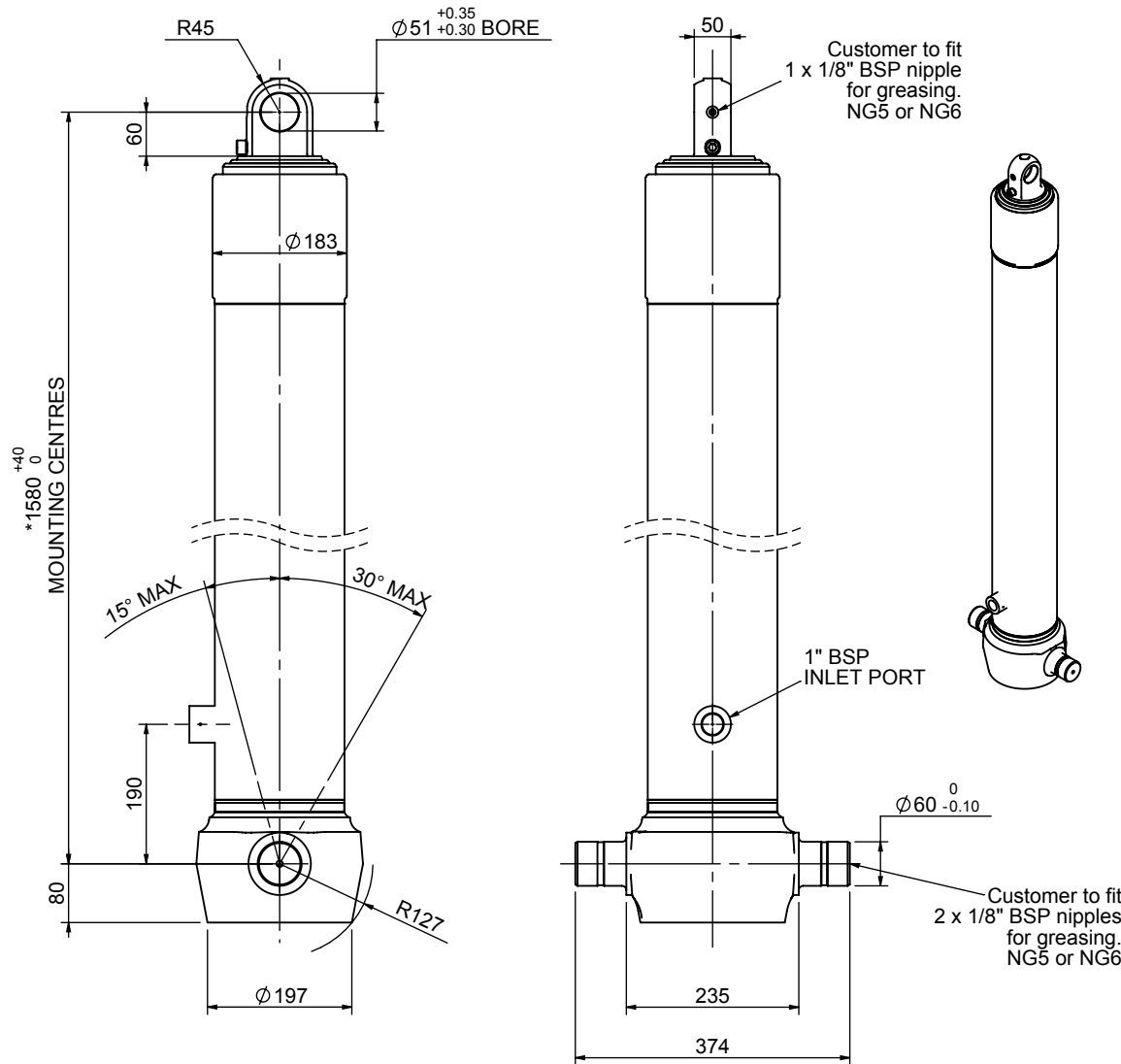


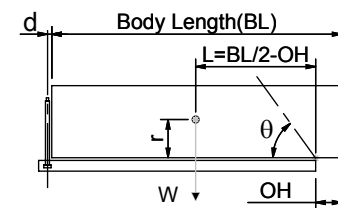
Cylinder 3 stage front end with plain eye

CS150E34039B19A01



SPECIFICATION		TIPPING CAPACITY : 35-52 TONNES***		
Stage	Diameter	Length	Stroke	Swept Volume
-	-	-	-	-
-	-	-	-	-
-	-	-	-	-
0	177	1575	-	-
1	155	1540	1327	25
2	136	1540	1347	20
3	117	1340	1362	15
Total (+5/-10)			4036	60
Final stroke reduced by	0	Priming Volume		20
Cylinder Mass (Kg)	159	Total Volume (Litres)		80
Maximum Pressure (Bar)	190	Max. first stage thrust		225 KN

***TIPPING CAPACITY AT WORKING PRESSURE



BODY LENGTH (BL)						OH
5250		5500		5750		
37	48°	36	45°	35	43°	150
43	51°	40	48°	39	46°	450
52	55°	48	52°	45	49°	750

d = 0; r = 750; Working Pressure 120 bar

For guidance only;
Higher working pressures and tipping capacities may be possible.
To check your application email - applications@edbro.co.uk

NOTES

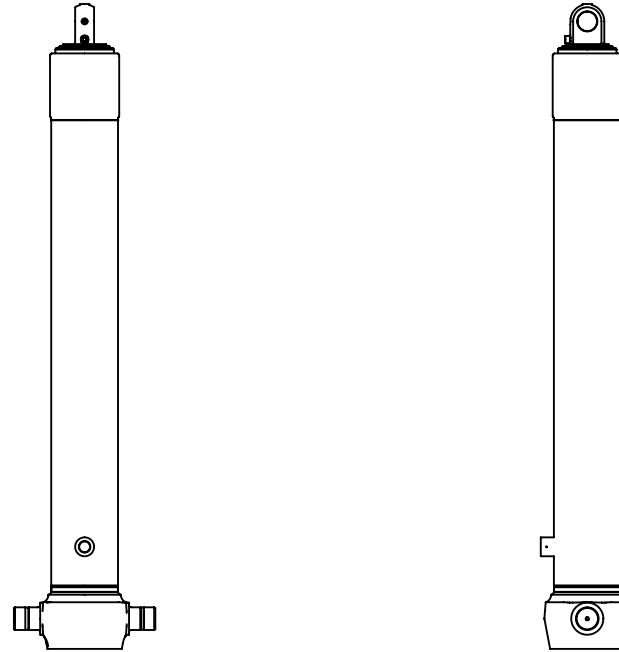
1. This cylinder is for lifting purposes only and side load conditions should be avoided
2. Cylinder is painted in primer paint to RAL5013
3. Refer to www.edbro.com for:-
 - Bracket details
 - Installation instructions that must be observed
 - Correct oil selection
 - An explanation of tipping capacity

*Includes 9mm Pull Out.
Last Stage Chrome Plated



Edbro plc
Nelson Street, Bolton, England, BL3 2JJ
Tel +44 (0) 1204 528888 Fax +44 (0) 1204 531957
Email: postmaster@edbro.com Web: www.edbro.com

Technical Specifications are subject to change without notice
Date Created/Updated: 04 September 2012
Refer www.edbro.com to confirm latest specification
All dimensions are in 'mm', unless otherwise stated



CS150E34039B19A01