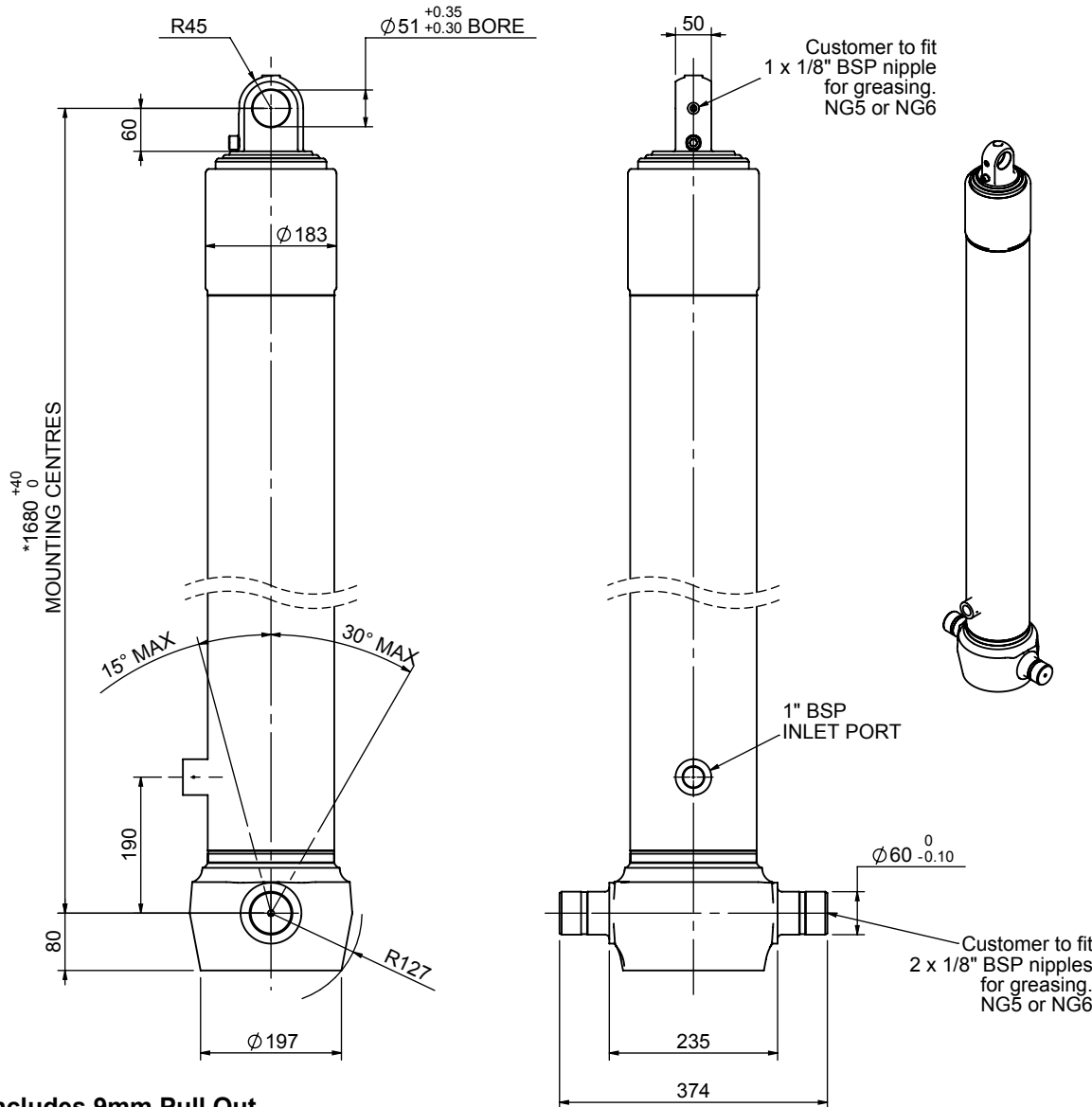


Cylinder 3 stage front end with plain eye

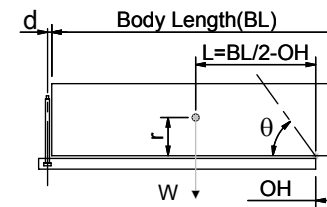
CS150E34339B19A01



*Includes 9mm Pull Out.
Last Stage Chrome Plated

SPECIFICATION		TIPPING CAPACITY : 38-53 TONNES***		
Stage	Diameter	Length	Stroke	Swept Volume
-	-	-	-	-
-	-	-	-	-
-	-	-	-	-
0	177	1675	-	-
1	155	1640	1427	27
2	136	1640	1447	21
3	117	1340	1462	16
Total (+5/-10)			4336	64
Final stroke reduced by	0	Priming Volume		21
Cylinder Mass (Kg)	167	Total Volume (Litres)		85
Maximum Pressure (Bar)	190	Max. first stage thrust		225 KN

***TIPPING CAPACITY AT WORKING PRESSURE



BODY LENGTH (BL)						OH
5750	6000	6250				
40	47°	39	45°	38	43°	150
45	50°	43	47°	42	45°	450
53	53°	50	50°	47	48°	750

$d = 0$; $r = 750$; Working Pressure 135 bar

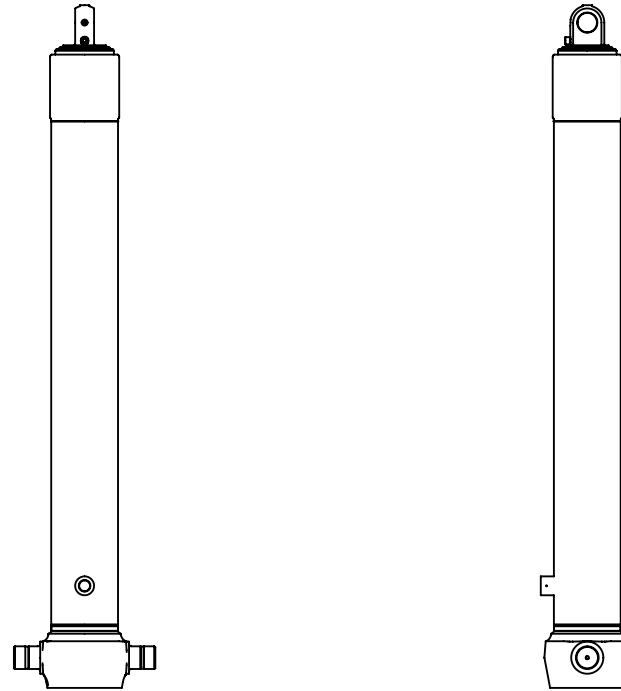
For guidance only;

Higher working pressures and tipping capacities may be possible.

To check your application email - applications@edbro.co.uk

NOTES

1. This cylinder is for lifting purposes only and side load conditions should be avoided
2. Cylinder is painted in primer paint to RAL5013
3. Refer to www.edbro.com for:-
 - Bracket details
 - Installation instructions that must be observed
 - Correct oil selection
 - An explanation of tipping capacity



CS150E34339B19A01