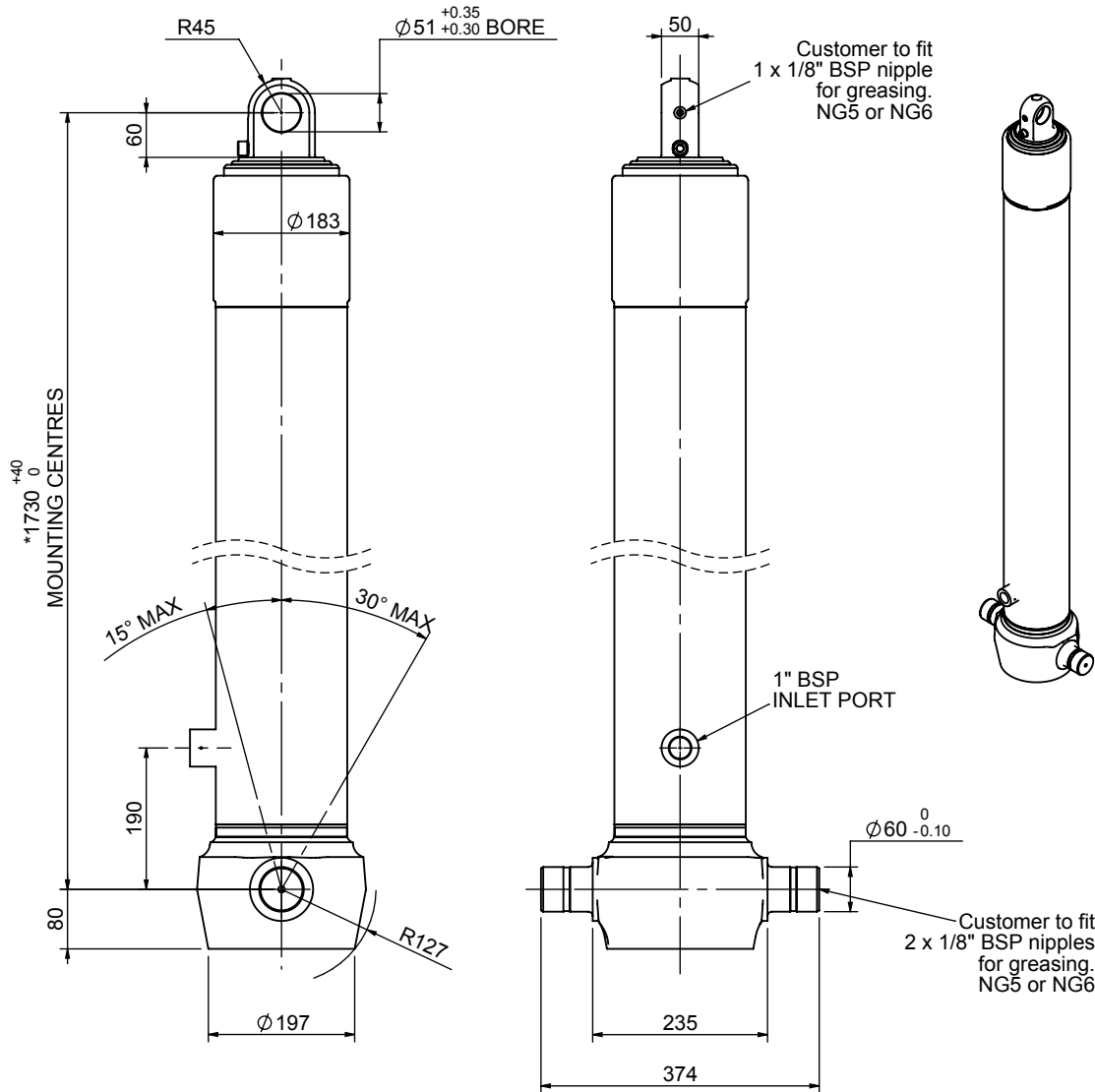


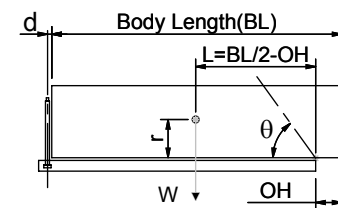
Cylinder 3 stage front end with plain eye

CS150E34489B19A01



SPECIFICATION		TIPPING CAPACITY : 38-52 TONNES***		
Stage	Diameter	Length	Stroke	Swept Volume
-	-	-	-	-
-	-	-	-	-
-	-	-	-	-
0	177	1725	-	-
1	155	1690	1477	28
2	136	1690	1497	22
3	117	1340	1512	16
		Total (+5/-10)	4486	66
Final stroke reduced by	0	Priming Volume		22
Cylinder Mass (Kg)	171	Total Volume (Litres)		88
Maximum Pressure (Bar)	190	Max. first stage thrust		225 KN

***TIPPING CAPACITY AT WORKING PRESSURE



BODY LENGTH (BL)						OH
5900	6150	6400				
40	47°	39	45°	38	43°	150
45	50°	43	48°	42	45°	450
52	53°	49	51°	47	48°	750

$d = 0$; $r = 750$; Working Pressure 135 bar
 For guidance only;
 Higher working pressures and tipping capacities may be possible.
 To check your application email - applications@edbro.co.uk

NOTES

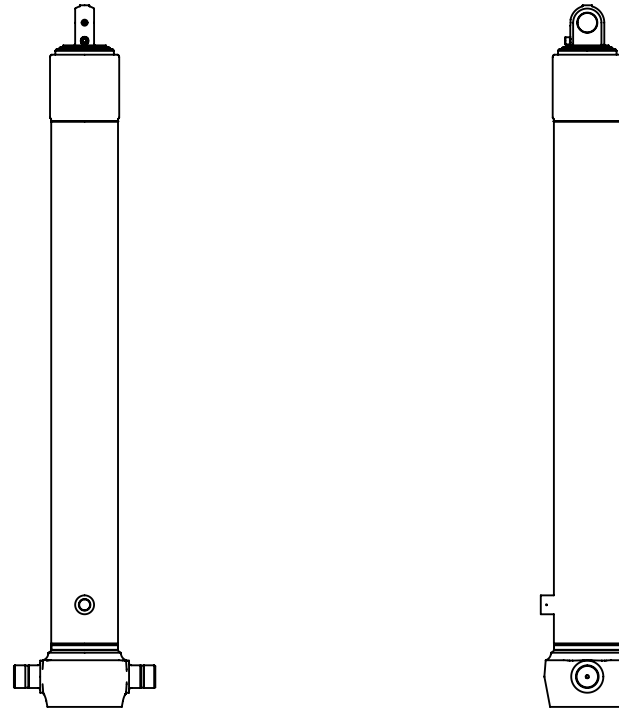
1. This cylinder is for lifting purposes only and side load conditions should be avoided
2. Cylinder is painted in primer paint to RAL5013
3. Refer to www.edbro.com for:-
 - Bracket details
 - Installation instructions that must be observed
 - Correct oil selection
 - An explanation of tipping capacity

*Includes 9mm Pull Out.
Last Stage Chrome Plated



Edbro plc
 Nelson Street, Bolton, England, BL3 2JJ
 Tel +44 (0) 1204 528888 Fax +44 (0) 1204 531957
 Email: postmaster@edbro.com Web: www.edbro.com

Technical Specifications are subject to change without notice
 Date Created/Updated: 04 September 2012
 Refer www.edbro.com to confirm latest specification
 All dimensions are in 'mm', unless otherwise stated



CS150E34489B19A01