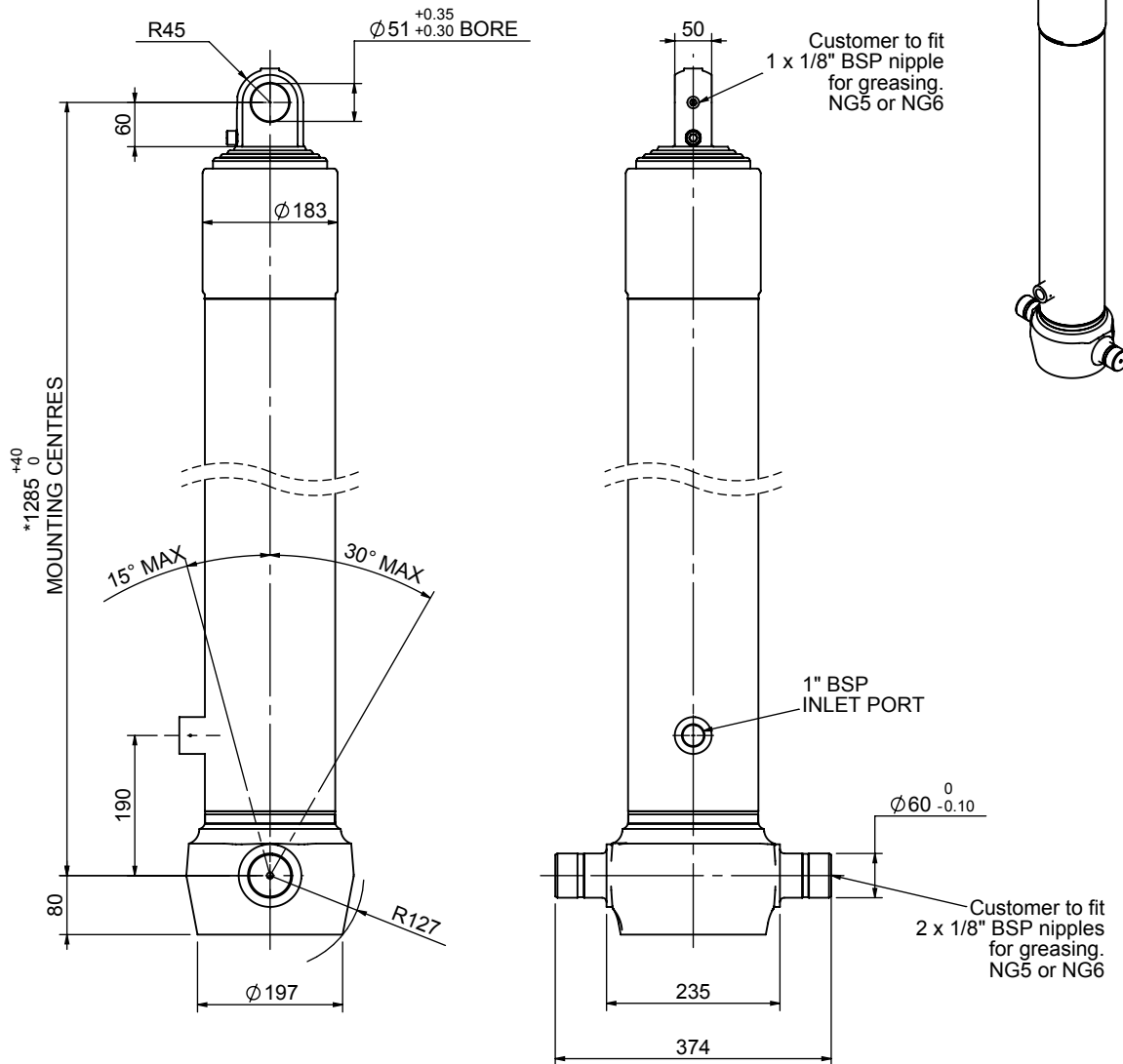


Cylinder 4 stage front end with plain eye

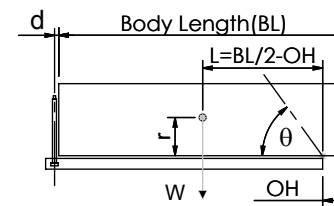
CS150E44206B19A01



SPECIFICATION TIPPING CAPACITY : 35-54 TONNES***

Stage	Diameter	Length	Stroke	Swept Volume
-	-	-	-	-
-	-	-	-	-
0	177	1275	-	-
1	155	1240	1027	19
2	136	1240	1047	15
3	117	1240	1062	11
4	98	1240	1067	8
Total (+5/-10)			4203	53
Final stroke reduced by	0	Priming Volume		14
Cylinder Mass (Kg)	149	Total Volume (Litres)		67
Maximum Pressure (Bar)	190	Max. first stage thrust		225 KN

***TIPPING CAPACITY AT WORKING PRESSURE



BODY LENGTH (BL)						OH
5500	5750	6000				
38	47°	36	45°	35	43°	150
44	50°	41	48°	39	45°	450
54	54°	49	51°	46	48°	750

d = 0; r = 750; Working Pressure 165 bar

For guidance only;

Higher working pressures and tipping capacities may be possible.
To check your application email - applications@edbro.co.uk

NOTES

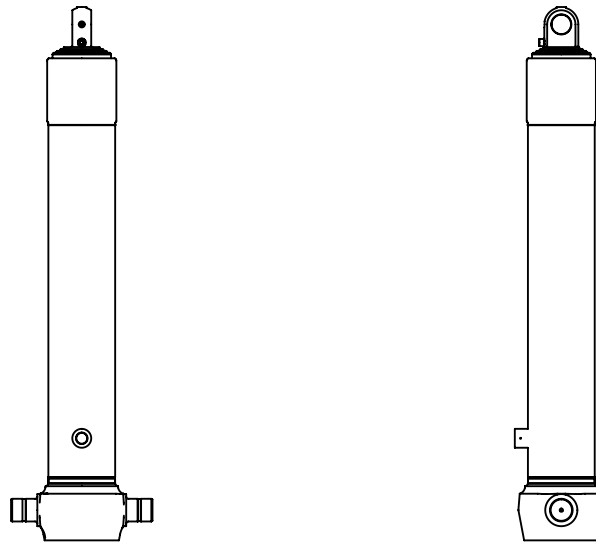
- This cylinder is for lifting purposes only and side load conditions should be avoided
- Cylinder is painted in primer paint to RAL5013
- Refer to www.edbro.com for:-
 - Bracket details
 - Installation instructions that must be observed
 - Correct oil selection
 - An explanation of tipping capacity

*Includes 9mm Pull Out.
Last Stage Chrome Plated

Edbro
SETTING THE INDUSTRY STANDARD

Edbro plc
Nelson Street, Bolton, England, BL3 2JJ
Tel +44 (0) 1204 528888 Fax +44 (0) 1204 531957
Email: postmaster@edbro.com Web: www.edbro.com

Technical Specifications are subject to change without notice
Date Created/Updated: 18 July 2012
Refer www.edbro.com to confirm latest specification
All dimensions are in 'mm', unless otherwise stated



CS150E44206B19A01