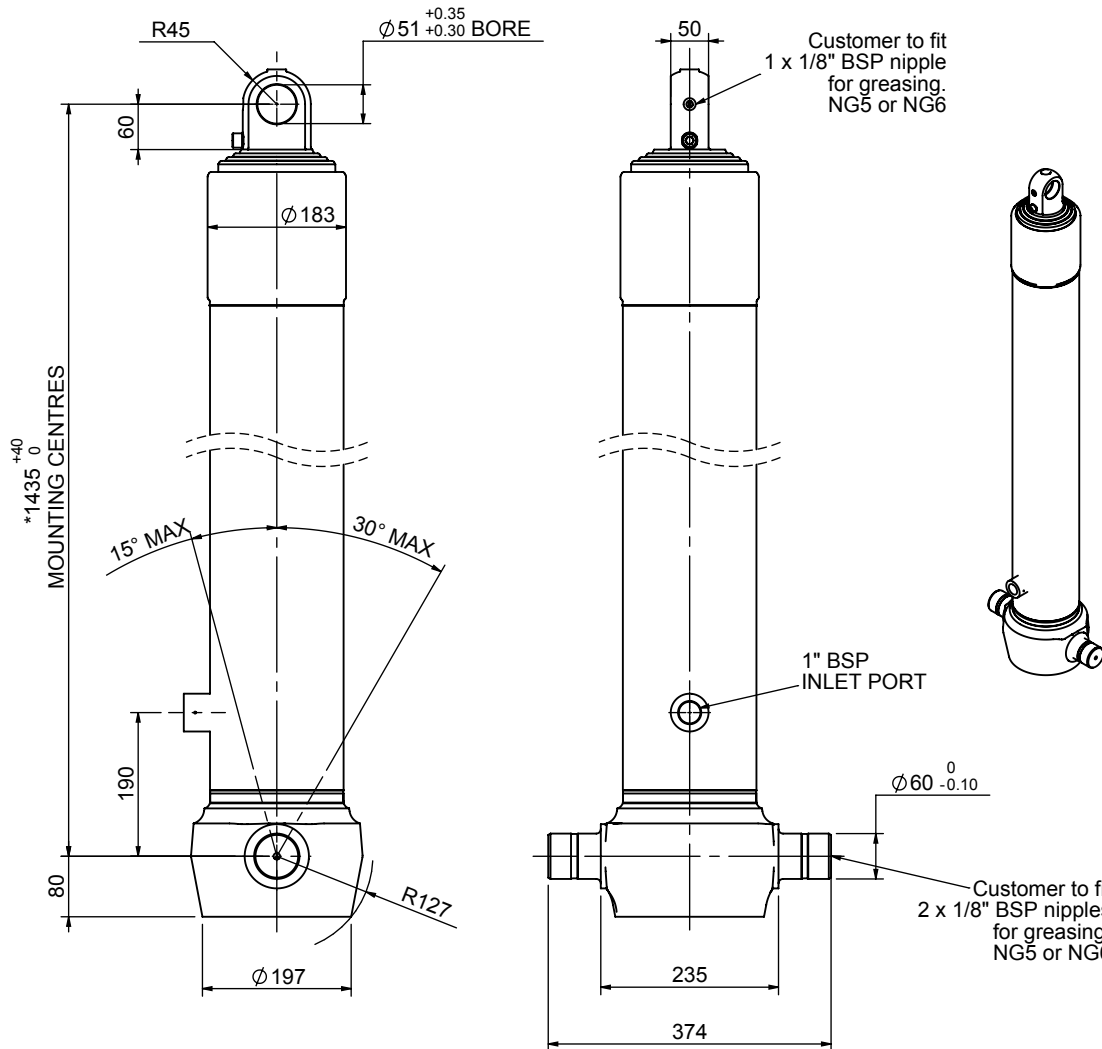


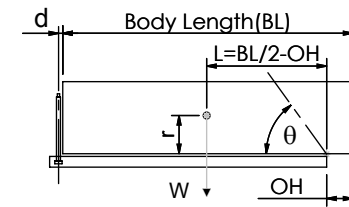
# Cylinder 4 stage front end with plain eye

CS150E44806B19A01



SPECIFICATION		TIPPING CAPACITY : 37-52 TONNES***		
Stage	Diameter	Length	Stroke	Swept Volume
-	-	-	-	-
-	-	-	-	-
0	177	1425	-	-
1	155	1390	1177	22
2	136	1390	1197	17
3	117	1390	1212	13
4	98	1390	1217	9
Total (+5/-10)			4803	61
Final stroke reduced by	0	Priming Volume		16
Cylinder Mass (Kg)	163	Total Volume (Litres)		77
Maximum Pressure (Bar)	190	Max. first stage thrust		225 KN

**\*\*\*TIPPING CAPACITY AT WORKING PRESSURE**



BODY LENGTH (BL)						OH
6200		6450		6700		
39	48°	38	46°	37	44°	150
44	51°	42	48°	40	46°	450
52	54°	48	51°	46	49°	750

d = 0; r = 750; Working Pressure 175 bar

**For guidance only;**

Higher working pressures and tipping capacities may be possible.  
To check your application email - [applications@edbro.co.uk](mailto:applications@edbro.co.uk)

**NOTES**

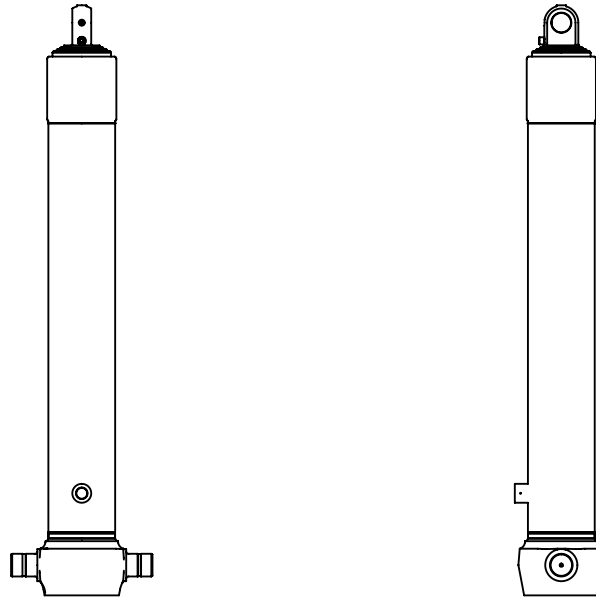
1. This cylinder is for lifting purposes only and side load conditions should be avoided
2. Cylinder is painted in primer paint to RAL5013
3. Refer to [www.edbro.com](http://www.edbro.com) for:-
  - Bracket details
  - Installation instructions that must be observed
  - Correct oil selection
  - An explanation of tipping capacity

\*Includes 9mm Pull Out. Last Stage Chrome Plated



**Edbro plc**  
Nelson Street, Bolton, England, BL3 2JJ  
Tel +44 (0) 1204 528888 Fax +44 (0) 1204 531957  
Email: [postmaster@edbro.com](mailto:postmaster@edbro.com) Web: [www.edbro.com](http://www.edbro.com)

Technical Specifications are subject to change without notice  
Date Created/Updated: 18 July 2012  
Refer [www.edbro.com](http://www.edbro.com) to confirm latest specification  
All dimensions are in 'mm', unless otherwise stated



CS150E44806B19A01