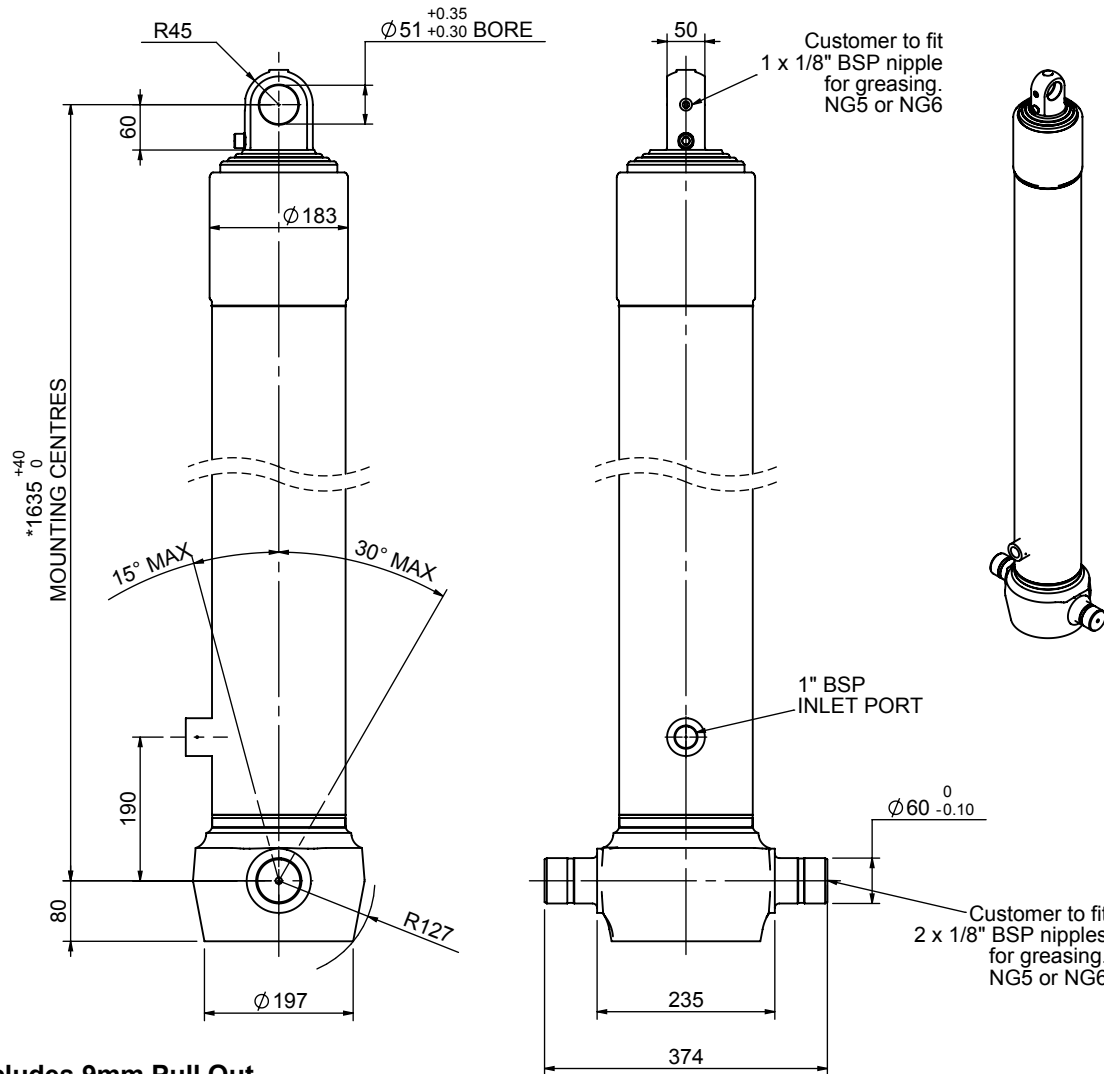


Cylinder 4 stage front end with plain eye

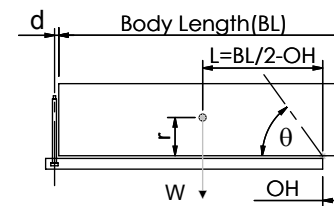
CS150E45606B19A01



*Includes 9mm Pull Out.
Last Stage Chrome Plated

SPECIFICATION		TIPPING CAPACITY : 27-37 TONNES***		
Stage	Diameter	Length	Stroke	Swept Volume
-	-	-	-	-
-	-	-	-	-
0	177	1625	-	-
1	155	1590	1377	26
2	136	1590	1397	20
3	117	1590	1412	15
4	98	1590	1417	11
Total (+5/-10)			5603	72
Final stroke reduced by	0	Priming Volume		18
Cylinder Mass (Kg)	181	Total Volume (Litres)		90
Maximum Pressure (Bar)	190	Max. first stage thrust		225 KN

***TIPPING CAPACITY AT WORKING PRESSURE



	BODY LENGTH (BL)				OH	
	7000	7500	8000			
30	49°	28	46°	27	42°	150
33	52°	31	48°	29	44°	450
37	55°	34	50°	32	46°	750

$d = 0$; $r = 750$; Working Pressure 135 bar

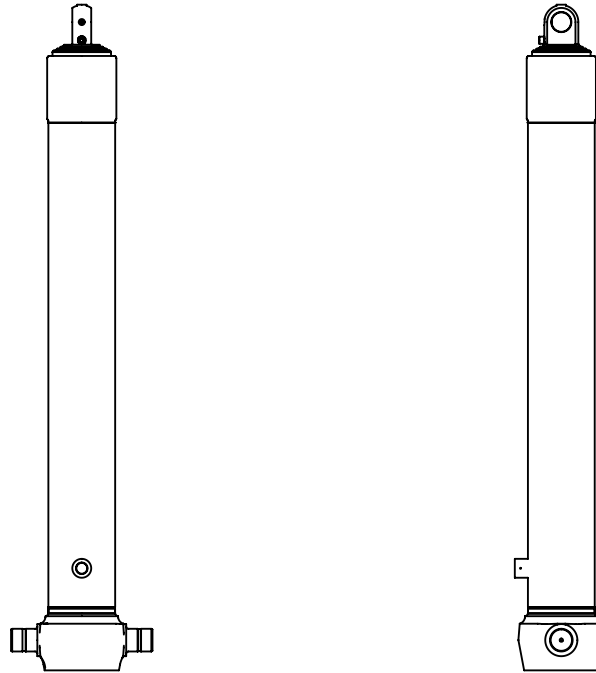
For guidance only;

Higher working pressures and tipping capacities may be possible.

To check your application email - applications@edbro.co.uk

NOTES

1. This cylinder is for lifting purposes only and side load conditions should be avoided
2. Cylinder is painted in primer paint to RAL5013
3. Refer to www.edbro.com for:-
 - Bracket details
 - Installation instructions that must be observed
 - Correct oil selection
 - An explanation of tipping capacity



CS150E45606B19A01