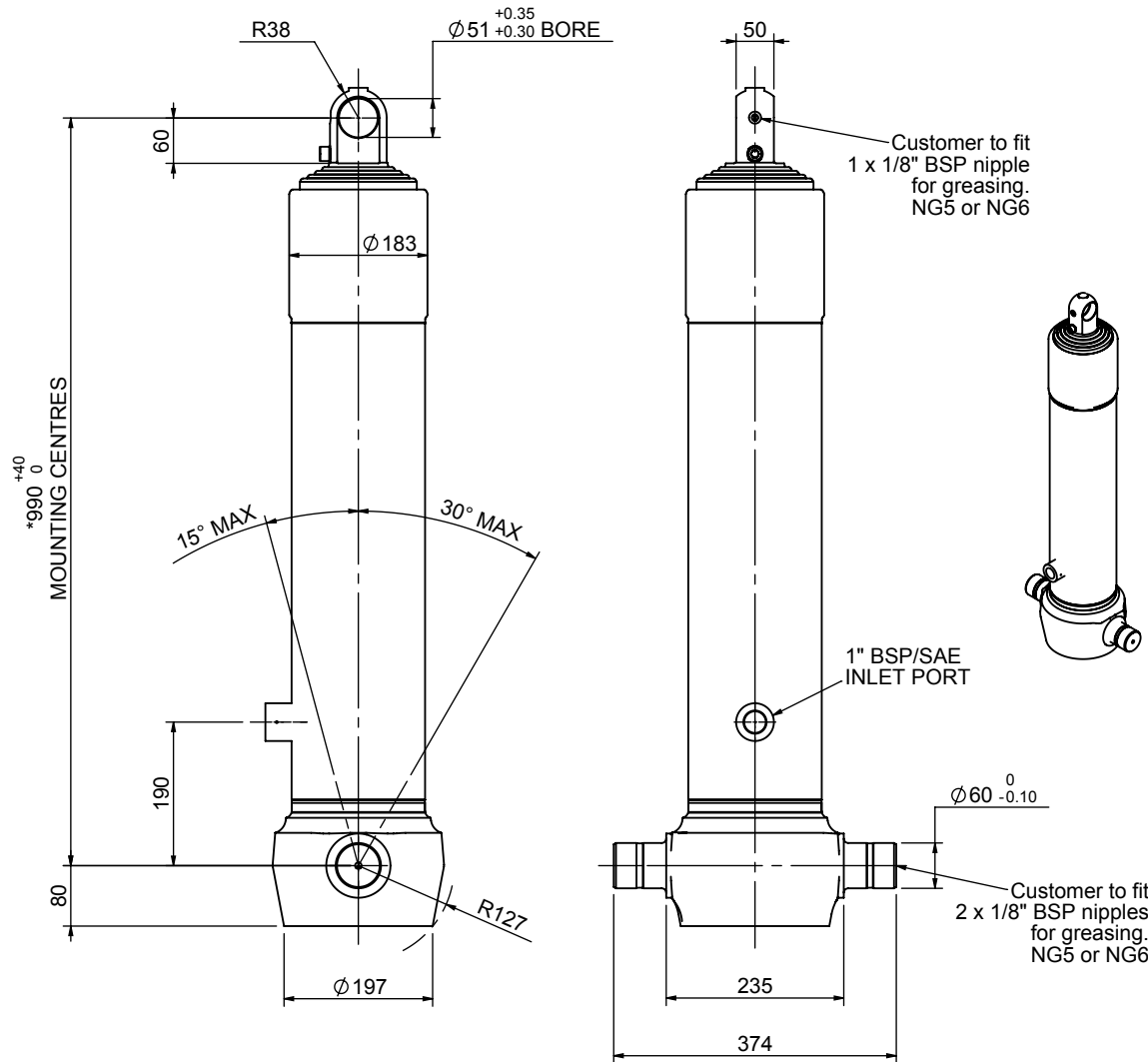


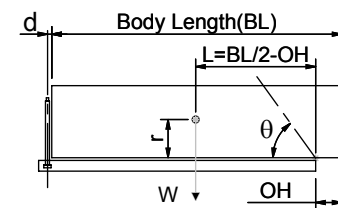
Cylinder 5 stage front end with plain eye

CS150E53778B19A01



SPECIFICATION		TIPPING CAPACITY : 25-46 TONNES***		
Stage	Diameter	Length	Stroke	Swept Volume
-	-	-	-	-
0	177	975	-	-
1	155	940	727	14
2	136	940	747	11
3	117	940	762	8
4	98	940	767	6
5	80	940	772	4
Total (+5/-10)			3775	43
Final stroke reduced by	0	Priming Volume		9
Cylinder Mass (Kg)	128	Total Volume (Litres)		52
Maximum Pressure (Bar)	190	Max. first stage thrust		225 KN

***TIPPING CAPACITY AT WORKING PRESSURE



BODY LENGTH (BL)						OH
5000	5250	5500				
28	47°	27	44°	25	42°	150
34	50°	31	47°	29	45°	450
46	54°	40	51°	36	48°	750

d = 0; r = 750; Working Pressure 175 bar

For guidance only;

Higher working pressures and tipping capacities may be possible.
To check your application email - applications@edbro.co.uk

NOTES

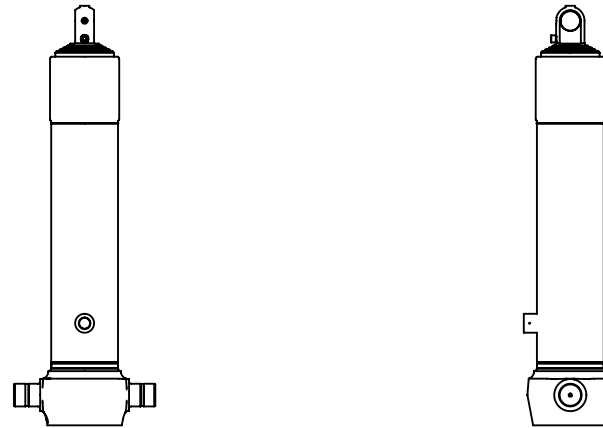
1. This cylinder is for lifting purposes only and side load conditions should be avoided
2. Cylinder is painted in primer paint to RAL5013
3. Refer to www.edbro.com for:-
 - Bracket details
 - Installation instructions that must be observed
 - Correct oil selection
 - An explanation of tipping capacity

*Includes 9mm Pull Out.
Last Stage Chrome Plated



Edbro plc
Nelson Street, Bolton, England, BL3 2JJ
Tel +44 (0) 1204 528888 Fax +44 (0) 1204 531957
Email: postmaster@edbro.com Web: www.edbro.com

Technical Specifications are subject to change without notice
Date Created/Updated: 04 September 2012
Refer www.edbro.com to confirm latest specification
All dimensions are in 'mm', unless otherwise stated



CS150E53778B19A01

