

Cylinder 5 stage front end with plain eye

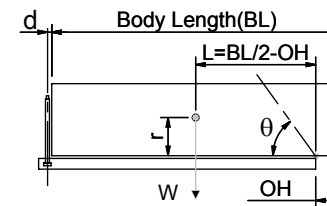
CS150E54778B19F03

SPECIFICATION

TIPPING CAPACITY : 25-37 TONNES***

Stage	Diameter	Length	Stroke	Swept Volume
-	-	-	-	-
0	177	1225	-	-
1	155	1190	977	18
2	136	1190	997	14
3	117	1190	1012	11
4	98	1190	1017	8
5	79	1240	772	4
Total (+5/-10)			4775	55
Final stroke reduced by	250	Priming Volume		12
Cylinder Mass (Kg)	151	Total Volume (Litres)		67
Maximum Pressure (Bar)	190	Max. first stage thrust		225 KN

***TIPPING CAPACITY AT WORKING PRESSURE



BODY LENGTH (BL)						OH
6300		6550		6800		
27	47°	26	45°	25	43°	150
31	49°	30	47°	28	45°	450
37	52°	34	50°	32	47°	750

$d = 0$; $r = 750$; Working Pressure 175 bar

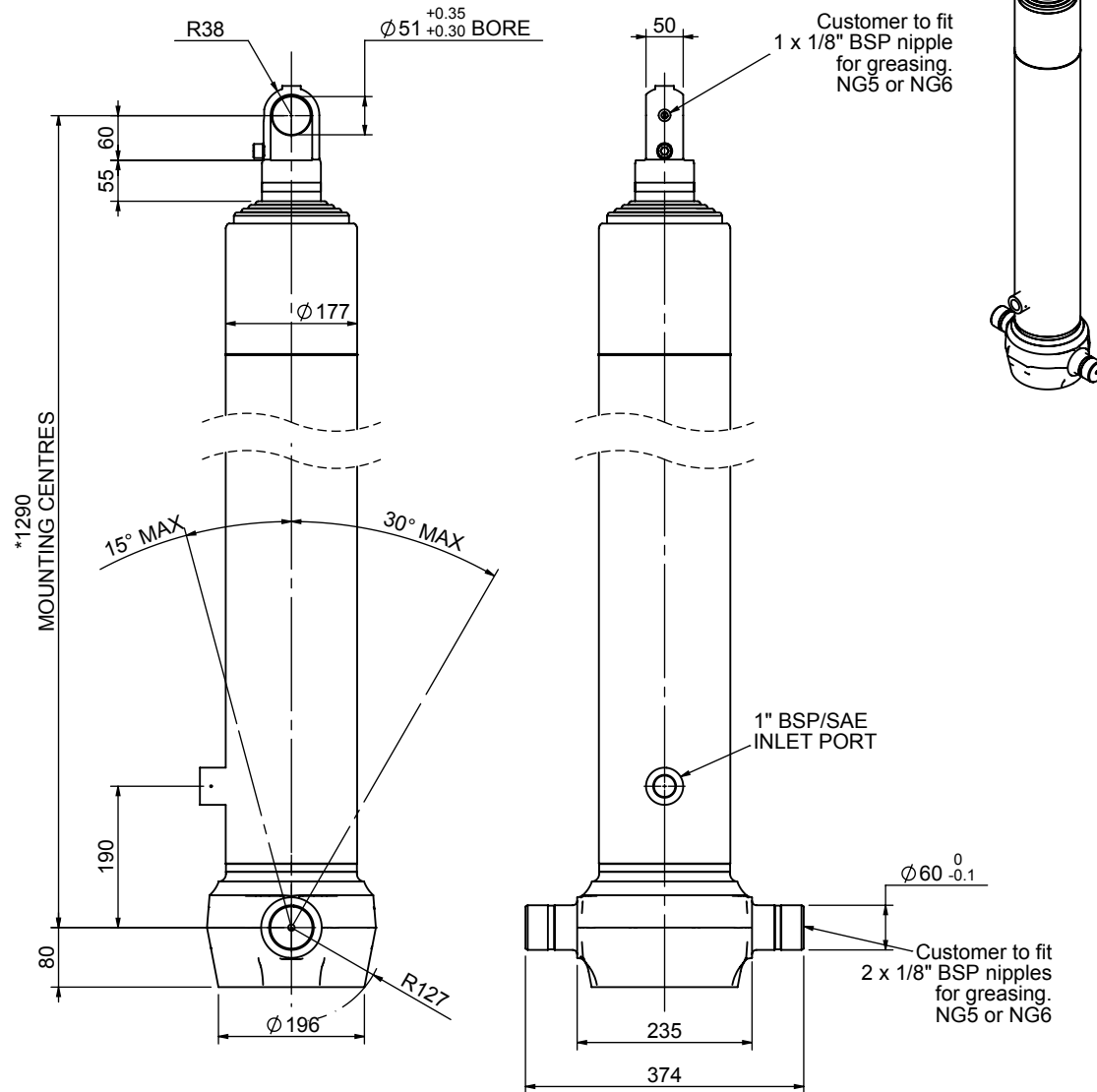
For guidance only;

Higher working pressures and tipping capacities may be possible.

To check your application email - applications@edbro.co.uk

NOTES

1. This cylinder is for lifting purposes only and side load conditions should be avoided
2. Cylinder is painted in primer paint to RAL5013
3. Refer to www.edbro.com for:-
 - Bracket details
 - Installation instructions that must be observed
 - Correct oil selection
 - An explanation of tipping capacity

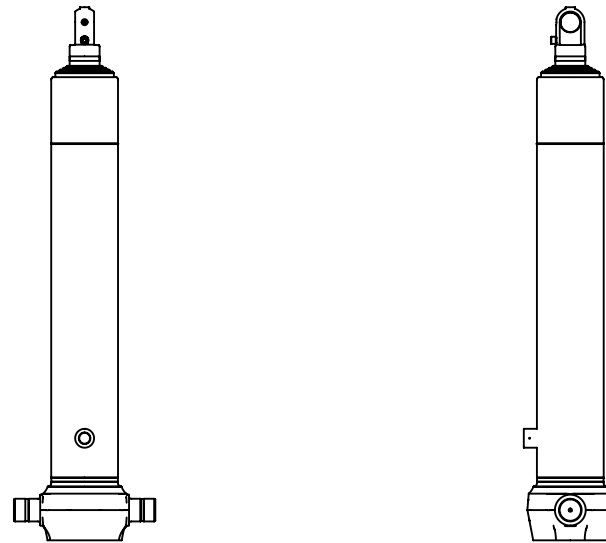


*Includes 9mm Pull Out.
Last Stage Chrome Plated

Edbro
SETTING THE INDUSTRY STANDARD

Edbro plc
Nelson Street, Bolton, England, BL3 2JJ
Tel +44 (0) 1204 528888 Fax +44 (0) 1204 531957
Email: postmaster@edbro.com Web: www.edbro.com

Technical Specifications are subject to change without notice
Date Created/Updated: 29 October 2015
Refer www.edbro.com to confirm latest specification
All dimensions are in 'mm', unless otherwise stated



CS150E54778B19F03