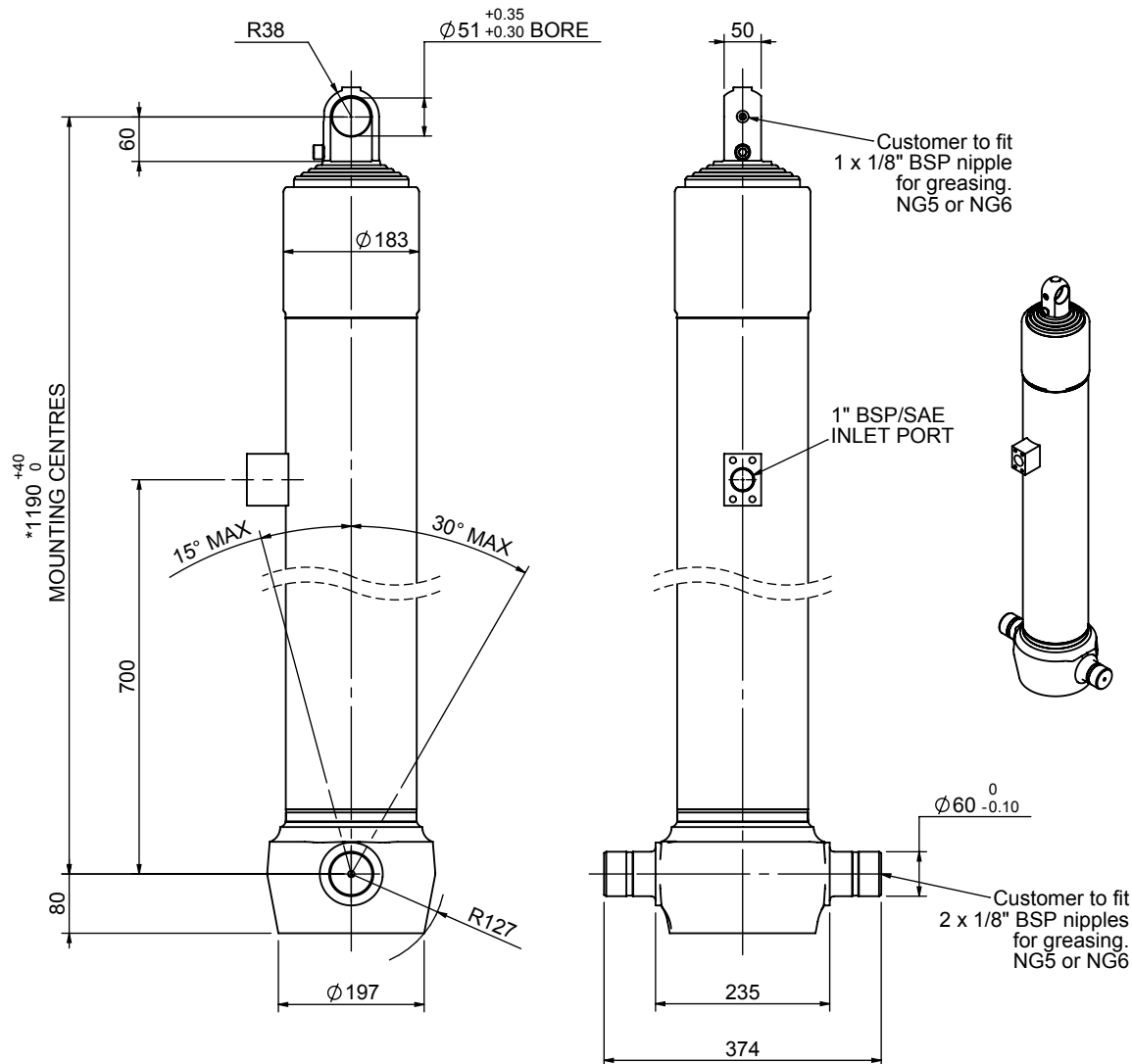


# Cylinder 5 stage front end with plain eye

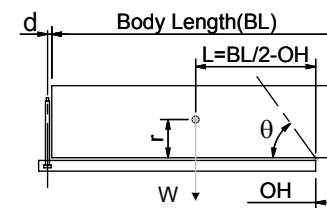
CS150E54778S70A01



## SPECIFICATION TIPPING CAPACITY : 18-26 TONNES\*\*\*

| Stage                   | Diameter | Length                  | Stroke | Swept Volume |
|-------------------------|----------|-------------------------|--------|--------------|
| -                       | -        | -                       | -      | -            |
| 0                       | 177      | 1175                    | -      | -            |
| 1                       | 155      | 1140                    | 927    | 17           |
| 2                       | 136      | 1140                    | 947    | 14           |
| 3                       | 117      | 1140                    | 962    | 10           |
| 4                       | 98       | 1140                    | 967    | 7            |
| 5                       | 80       | 1140                    | 972    | 5            |
| Total (+5/-10)          |          |                         | 4775   | 53           |
| Final stroke reduced by | 0        | Priming Volume          |        | 12           |
| Cylinder Mass (Kg)      | 149      | Total Volume (Litres)   |        | 65           |
| Maximum Pressure (Bar)  | 190      | Max. first stage thrust |        | 225 KN       |

### \*\*\*TIPPING CAPACITY AT WORKING PRESSURE



| BODY LENGTH (BL) |      |      |     |    |     | OH  |
|------------------|------|------|-----|----|-----|-----|
| 7150             | 7650 | 8150 |     |    |     |     |
| 20               | 50°  | 19   | 46° | 18 | 43° | 150 |
| 23               | 52°  | 21   | 48° | 20 | 45° | 450 |
| 26               | 55°  | 23   | 50° | 21 | 47° | 750 |

d = 0; r = 750; Working Pressure 135 bar

#### For guidance only;

Higher working pressures and tipping capacities may be possible.  
To check your application email - [applications@edbro.co.uk](mailto:applications@edbro.co.uk)

#### NOTES

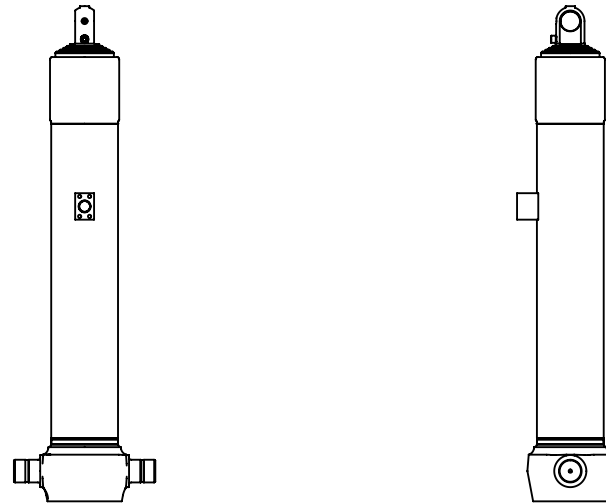
- This cylinder is for lifting purposes only and side load conditions should be avoided
- Cylinder is painted in primer paint to RAL5013
- Refer to [www.edbro.com](http://www.edbro.com) for:-
  - Bracket details
  - Installation instructions that must be observed
  - Correct oil selection
  - An explanation of tipping capacity

\*Includes 9mm Pull Out.  
Last Stage Chrome Plated



**Edbro plc**  
Nelson Street, Bolton, England, BL3 2JJ  
Tel +44 (0) 1204 528888 Fax +44 (0) 1204 531957  
Email: [postmaster@edbro.com](mailto:postmaster@edbro.com) Web: [www.edbro.com](http://www.edbro.com)

Technical Specifications are subject to change without notice  
Date Created/Updated: 04 September 2012  
Refer [www.edbro.com](http://www.edbro.com) to confirm latest specification  
All dimensions are in 'mm', unless otherwise stated



CS150E54778S70A01

