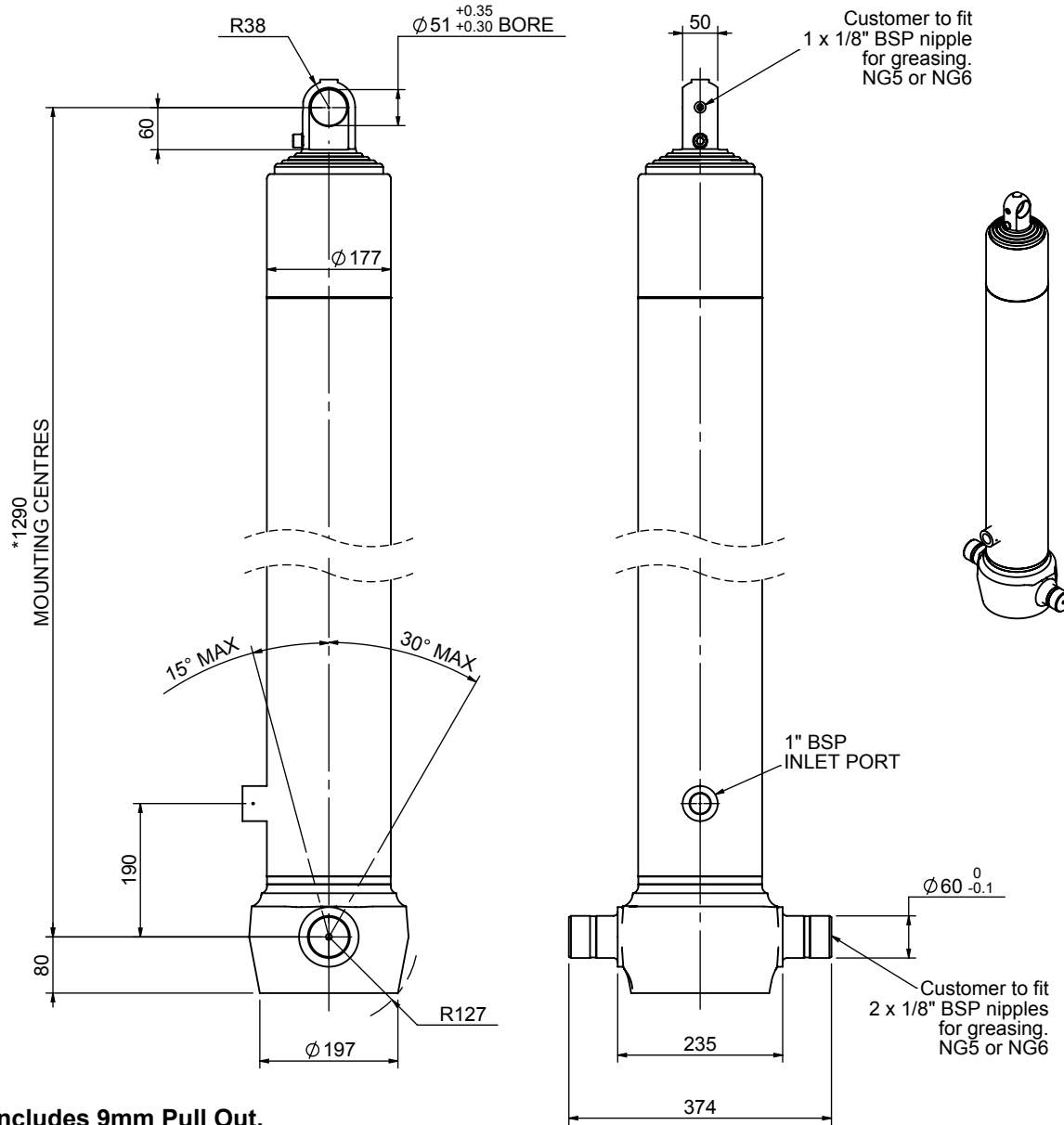


# Cylinder 5 stage front end with plain eye



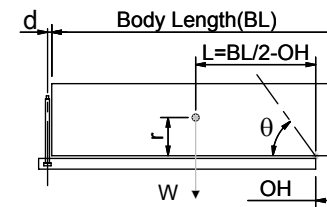
\*Includes 9mm Pull Out.  
All Stages Chrome Plated

# CS150E55278B19A01C

SPECIFICATION TIPPING CAPACITY : 25-38 TONNES\*\*\*

Stage	Diameter	Length	Stroke	Swept Volume
-	-	-	-	-
0	177	1275	-	-
1	155	1240	1027	19
2	136	1240	1047	15
3	117	1240	1062	11
4	98	1240	1067	8
5	79	1240	1072	5
Total (+5/-10)			5275	58
Final stroke reduced by		Priming Volume		12
Cylinder Mass (Kg)		155	Total Volume (Litres)	70
Maximum Pressure (Bar)		190	Max. first stage thrust	225 KN

### \*\*\*TIPPING CAPACITY AT WORKING PRESSURE



BODY LENGTH (BL)						OH
6600	6850	7100				
24	49°	23	47°	22	45°	150
27	52°	25	49°	24	48°	450
31	55°	29	52°	28	50°	750

d = 0; r = 750; Working Pressure 155 bar

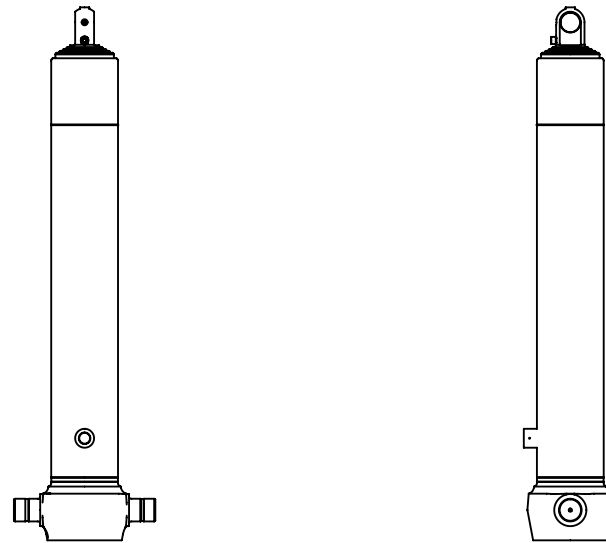
### For guidance only;

Higher working pressures and tipping capacities may be possible.

To check your application email - [applications@edbro.co.uk](mailto:applications@edbro.co.uk)

### NOTES

1. This cylinder is for lifting purposes only and side load conditions should be avoided
2. Cylinder is painted in primer paint to RAL5013
3. Refer to [www.edbro.com](http://www.edbro.com) for:-
  - Bracket details
  - Installation instructions that must be observed
  - Correct oil selection
  - An explanation of tipping capacity



CS150E55278B19A01C