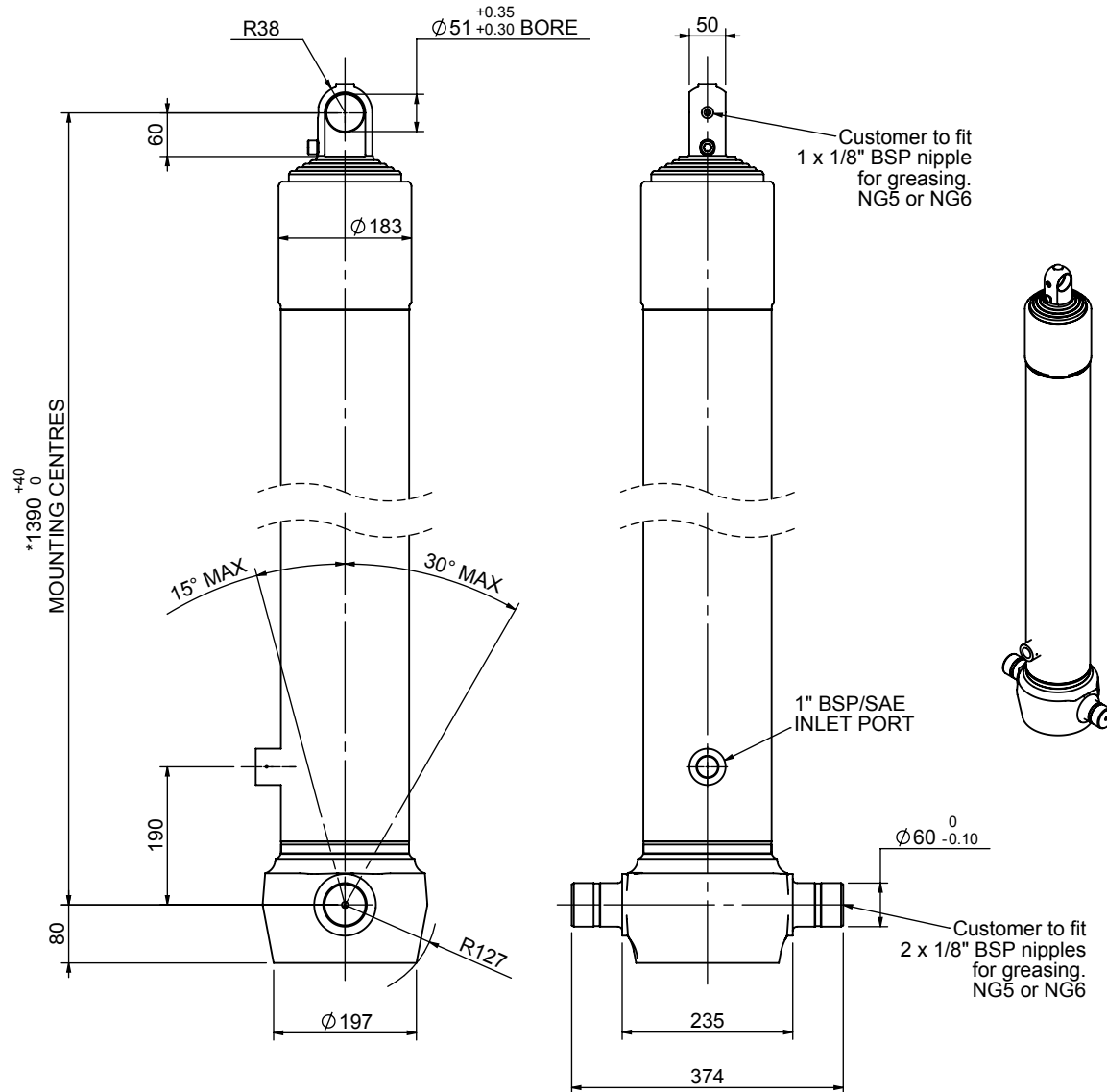


Cylinder 5 stage front end with plain eye

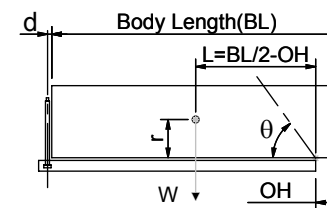
CS150E55778B19A01



SPECIFICATION

SPECIFICATION		TIPPING CAPACITY : 18-26 TONNES***		
Stage	Diameter	Length	Stroke	Swept Volume
-	-	-	-	-
0	177	1375	-	-
1	155	1340	1127	21
2	136	1340	1147	17
3	117	1340	1162	12
4	98	1340	1167	9
5	80	1340	1172	6
Total (+5/-10)			5775	65
Final stroke reduced by	0	Priming Volume		14
Cylinder Mass (Kg)	167	Total Volume (Litres)		79
Maximum Pressure (Bar)	190	Max. first stage thrust		225 KN

***TIPPING CAPACITY AT WORKING PRESSURE



		BODY LENGTH (BL)			OH	
		7150	7650	8150		
20	50°	19	46°	18	43°	150
23	52°	21	48°	20	45°	450
26	55°	23	50°	21	47°	750

d = 0; r = 750; Working Pressure 135 bar

For guidance only;

Higher working pressures and tipping capacities may be possible.
To check your application email - applications@edbro.co.uk

NOTES

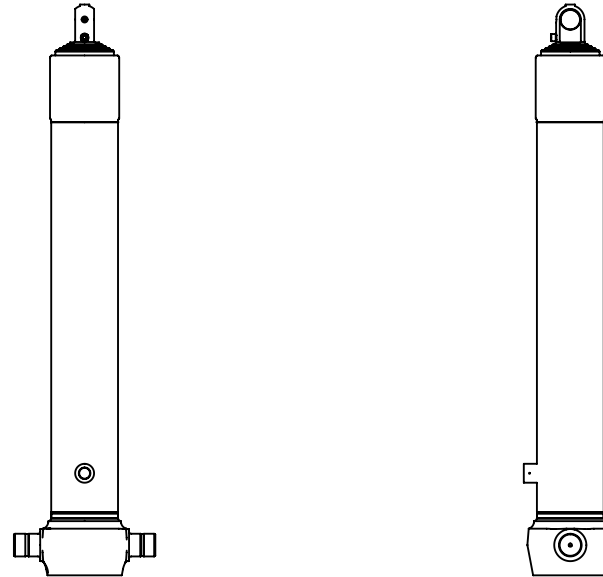
1. This cylinder is for lifting purposes only and side load conditions should be avoided
2. Cylinder is painted in primer paint to RAL5013
3. Refer to www.edbro.com for:-
 - Bracket details
 - Installation instructions that must be observed
 - Correct oil selection
 - An explanation of tipping capacity

*Includes 9mm Pull Out.
Last Stage Chrome Plated



Edbro plc
Nelson Street, Bolton, England, BL3 2JJ
Tel +44 (0) 1204 528888 Fax +44 (0) 1204 531957
Email: postmaster@edbro.com Web: www.edbro.com

Technical Specifications are subject to change without notice
Date Created/Updated: 04 September 2012
Refer www.edbro.com to confirm latest specification
All dimensions are in 'mm', unless otherwise stated



CS150E55778B19A01