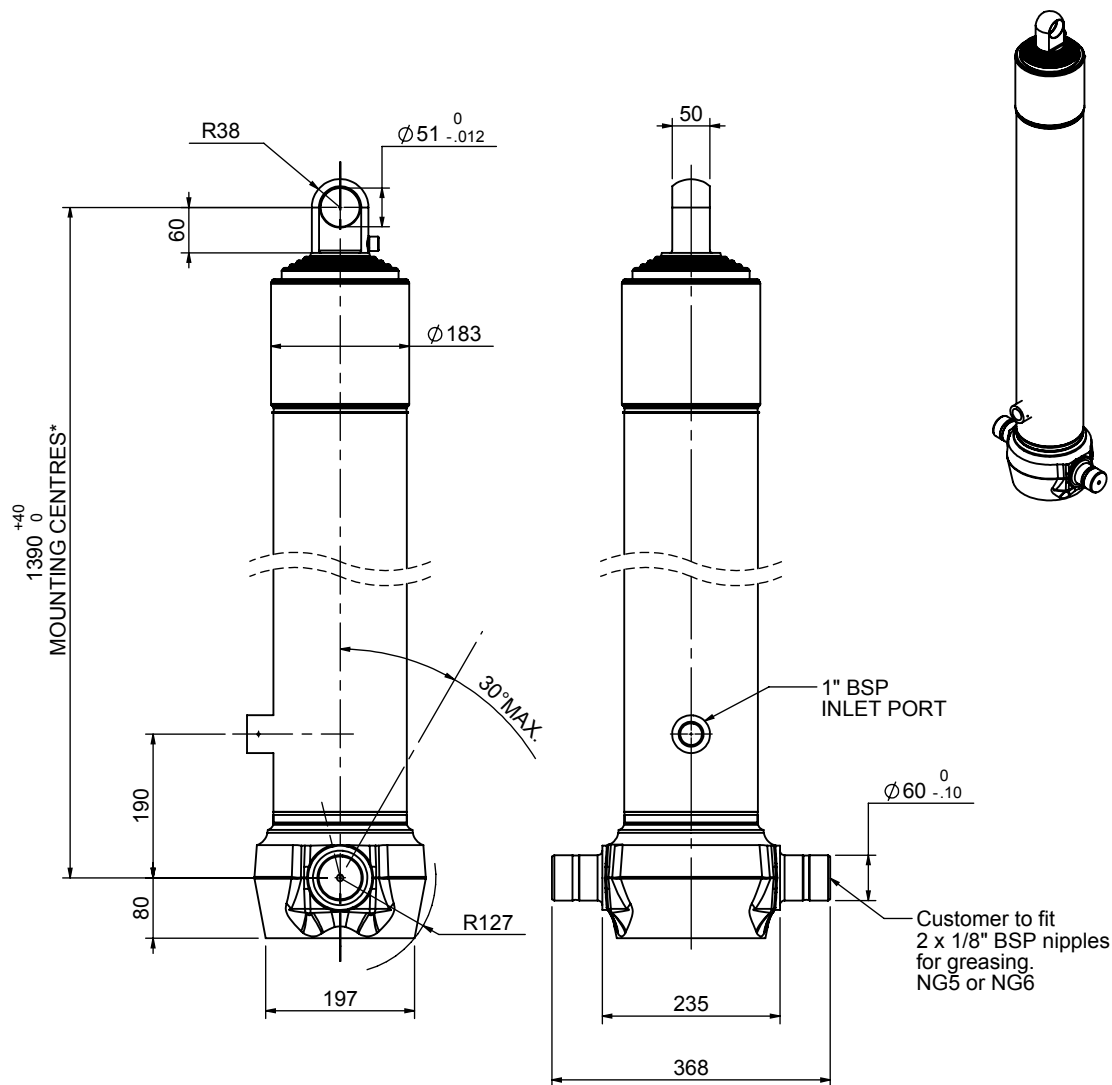


# Cylinder 5 stage front end with plain eye

## CS150E55778B19A01C

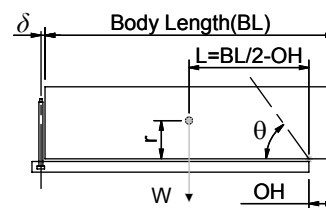


### SPECIFICATION RATED CAPACITY : 20-27 TONNES\*\*\*

Stage	Diameter	Length	Stroke	Swept Volume
-	-	-	-	-
0	177	-	-	-
1	155	1375	1127	-
2	136	1340	1147	17
3	117	1340	1162	12
4	102	1340	1167	10
5	79.74	1340	1172	6
Final stroke reduced by	0	Total (+5/-10)	5775	45
Cylinder Mass (Kg)	167.16	Priming Volume		13.9
Rated Pressure (Bar)	135	Total Volume (Litres)		58.9
Maximum Pressure (Bar)	175	Max. first stage thrust		230 KN

### \*\*\*TIPPING CAPACITY AT RATED PRESSURE

$d = 0 ; r = 750$



BODY LENGTH (BL)					OH	
7250	7500	7750				
20	49°	19	47°	19	45°	150
22	51°	21	49°	21	47°	450
25	54°	24	52°	23	50°	750

Tipping angle ( $\theta$ )  
Body + payload mass, W (tonne)

### For guidance only;

Higher Rated Pressures may be possible. To check your application, email Edbro plc at <applications@edbro.co.uk>

### NOTES

- If hydraulic pressure is used to limit overloading, the system relief valve must be set to the Rated Pressure unless agreed otherwise by Edbro
- The system relief valve can be set to Maximum Pressure if the load is limited by other means. See RATINGS page for advice
- This cylinder is for lifting purposes only and sideload conditions must be avoided
- Cylinder is painted in primer paint to RAL5013
- See bracket options page BRKT01, BRKT02
- See installation instructions INSTALL01
- Use oil according to specification OIL01

\*Include 9mm Pull Out  
All Stages Chrome Plated

**Edbro**  
SETTING THE INDUSTRY STANDARD

Edbro plc  
Nelson Street, Bolton, Lancashire BL3 2JJ UK  
Tel +44 (0) 1204 528888 Fax +44 (0) 1204 531957  
Email: postmaster@edbro.com Web: www.edbro.com

Technical Specifications are subject to change without notice  
Date Created/Updated: 05 March 2010 11:48:46  
Refer www.edbro.com to confirm latest specification  
All dimensions are in 'mm', unless otherwise stated