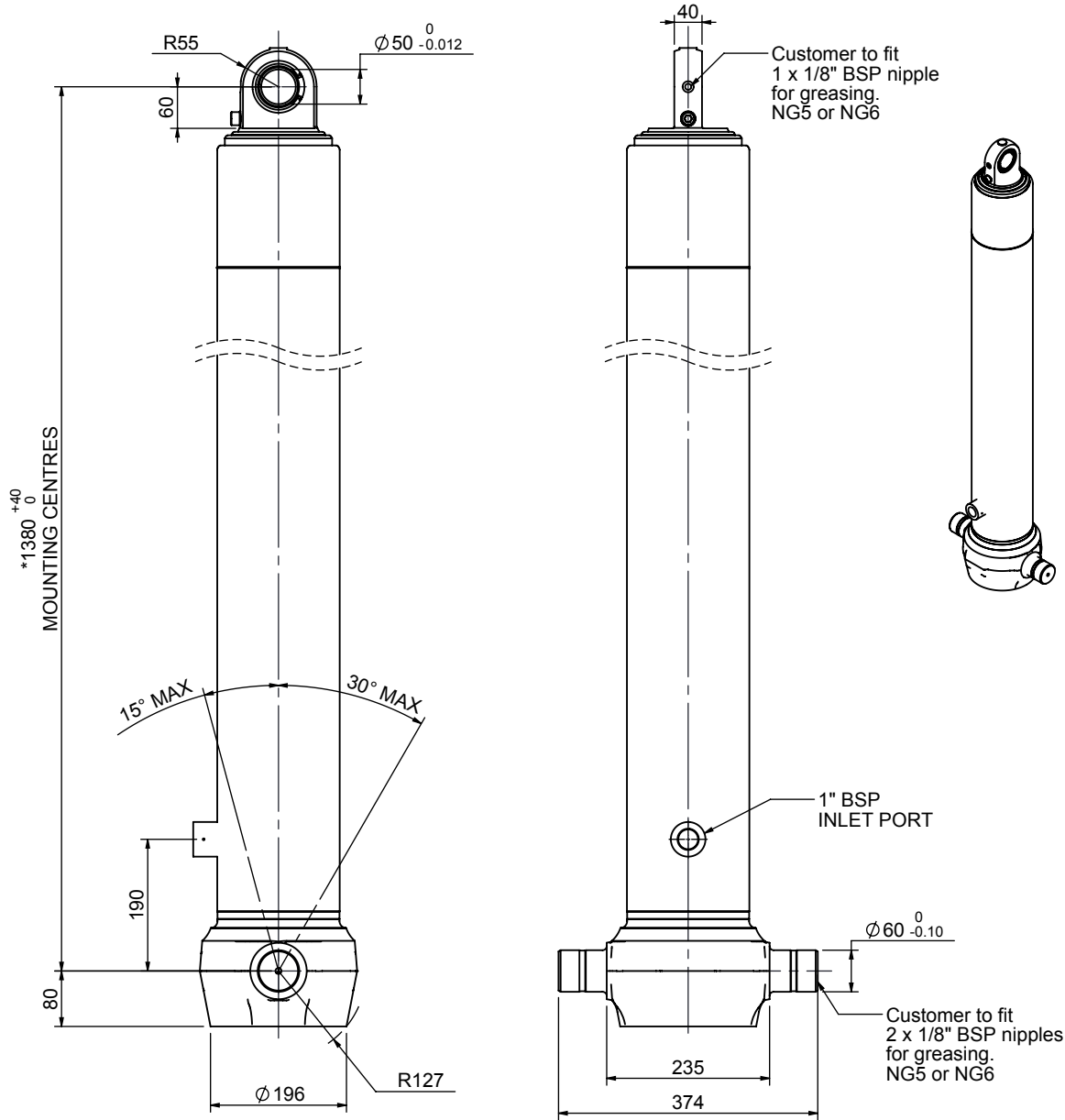


Cylinder 3 stage front end with spherical eye

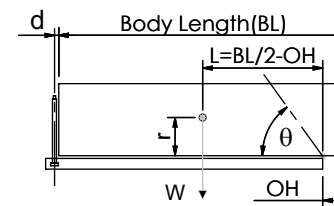


*Includes 9mm Pull Out. All Stages Chrome Plated

CS150S33439B19A01C

SPECIFICATION		TIPPING CAPACITY : 35-56 TONNES***		
Stage	Diameter	Length	Stroke	Swept Volume
-	-	-	-	-
-	-	-	-	-
-	-	-	-	-
0	177	1375	-	-
1	155	1340	1127	21
2	136	1340	1147	17
3	117	1340	1162	12
Total (+5/-10)			3436	50
Final stroke reduced by	0	Priming Volume		17
Cylinder Mass (Kg)	141	Total Volume (Litres)		67
Maximum Pressure (Bar)	190	Max. first stage thrust		230 KN

***TIPPING CAPACITY AT WORKING PRESSURE



BODY LENGTH (BL)						OH
4700		4950		5200		
37	45°	36	43°	35	41°	150
44	49°	41	46°	39	43°	450
56	53°	51	50°	47	47°	750

d = 0; r = 750; Working Pressure 120 bar

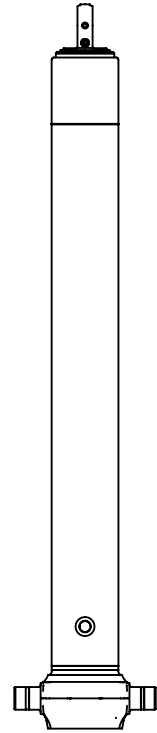
For guidance only;

Higher working pressures and tipping capacities may be possible.

To check your application email - applications@edbro.co.uk

NOTES

1. This cylinder is for lifting purposes only and side load conditions should be avoided
2. Cylinder is painted in primer paint to RAL5013
3. Refer to www.edbro.com for:-
 - Bracket details
 - Installation instructions that must be observed
 - Correct oil selection
 - An explanation of tipping capacity



CS150S34639B19A01C