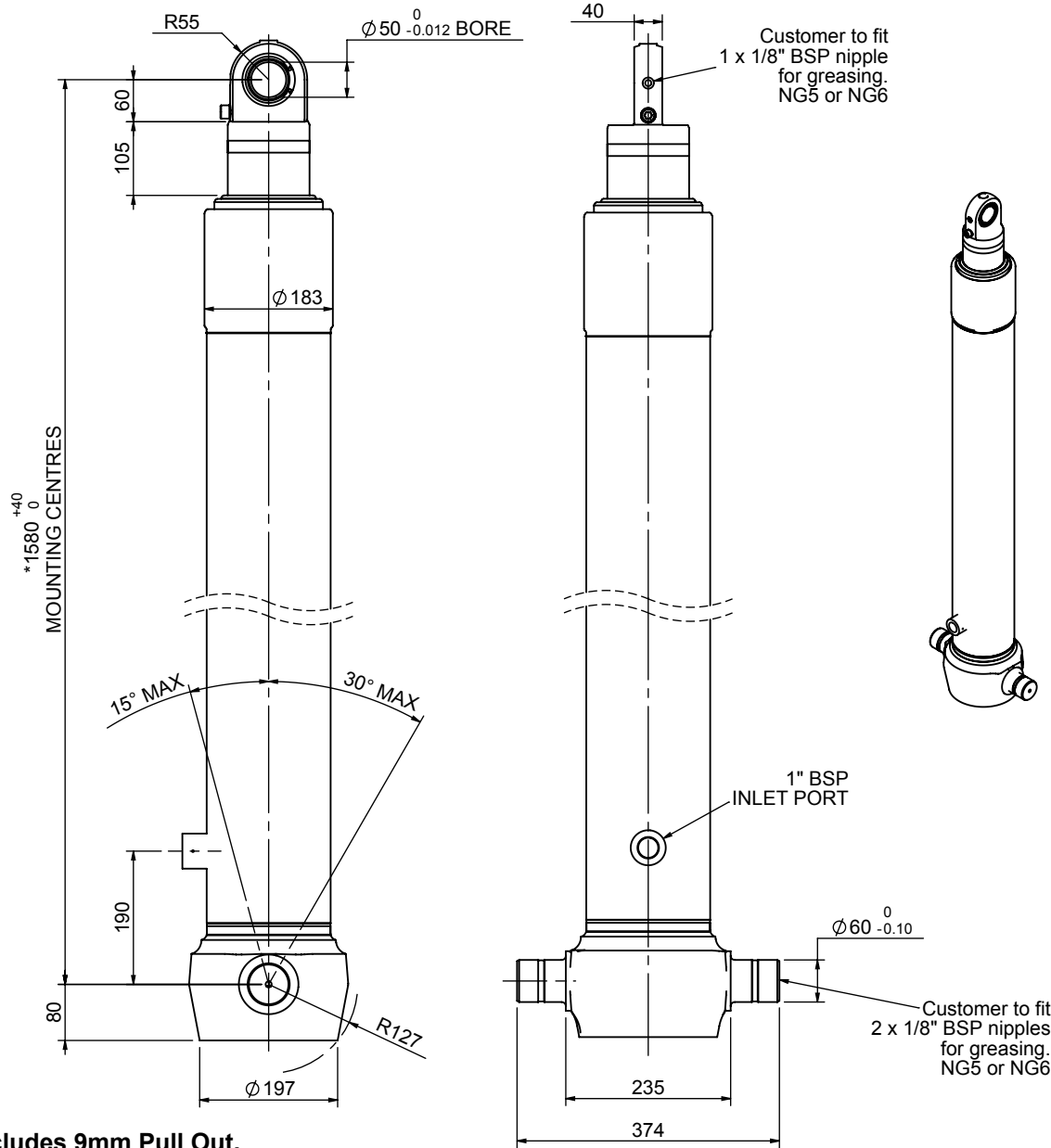


Cylinder 3 stage front end with spherical eye

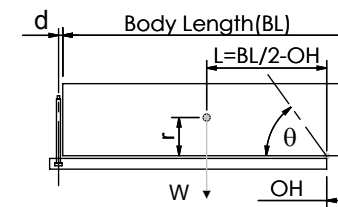
CS150S33739B19A05



SPECIFICATION TIPPING CAPACITY : 35-53 TONNES***

Stage	Diameter	Length	Stroke	Swept Volume
-	-	-	-	-
-	-	-	-	-
-	-	-	-	-
0	177	1475	-	-
1	155	1440	1227	23
2	136	1440	1247	18
3	117	1540	1262	14
Total (+5/-10)			3736	55
Final stroke reduced by	0	Priming Volume		18
Cylinder Mass (Kg)	152	Total Volume (Litres)		73
Maximum Pressure (Bar)	190	Max. first stage thrust		225 KN

***TIPPING CAPACITY AT WORKING PRESSURE



BODY LENGTH (BL)						OH
5000		5250		5500		
37	47°	36	44°	35	42°	150
43	50°	41	47°	39	44°	450
53	54°	49	51°	45	48°	750

d = 0; r = 750; Working Pressure 120 bar

For guidance only;

Higher working pressures and tipping capacities may be possible.

To check your application email - applications@edbro.co.uk

NOTES

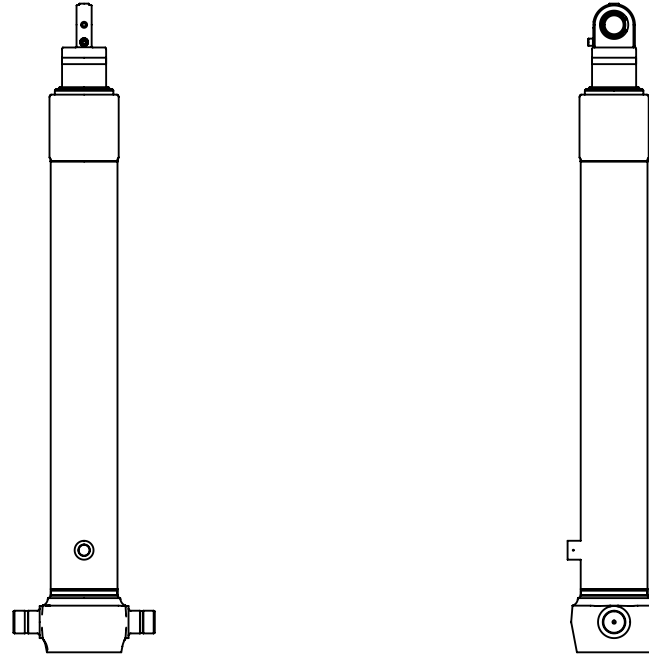
- This cylinder is for lifting purposes only and side load conditions should be avoided
- Cylinder is painted in primer paint to RAL5013
- Refer to www.edbro.com for:-
 - Bracket details
 - Installation instructions that must be observed
 - Correct oil selection
 - An explanation of tipping capacity

*Includes 9mm Pull Out.
Last Stage Chrome Plated

Edbro
SETTING THE INDUSTRY STANDARD

Edbro plc
Nelson Street, Bolton, England, BL3 2JJ
Tel +44 (0) 1204 528888 Fax +44 (0) 1204 531957
Email: postmaster@edbro.com Web: www.edbro.com

Technical Specifications are subject to change without notice
Date Created/Updated: 19 July 2012
Refer www.edbro.com to confirm latest specification
All dimensions are in 'mm', unless otherwise stated



CS150S33739B19A05