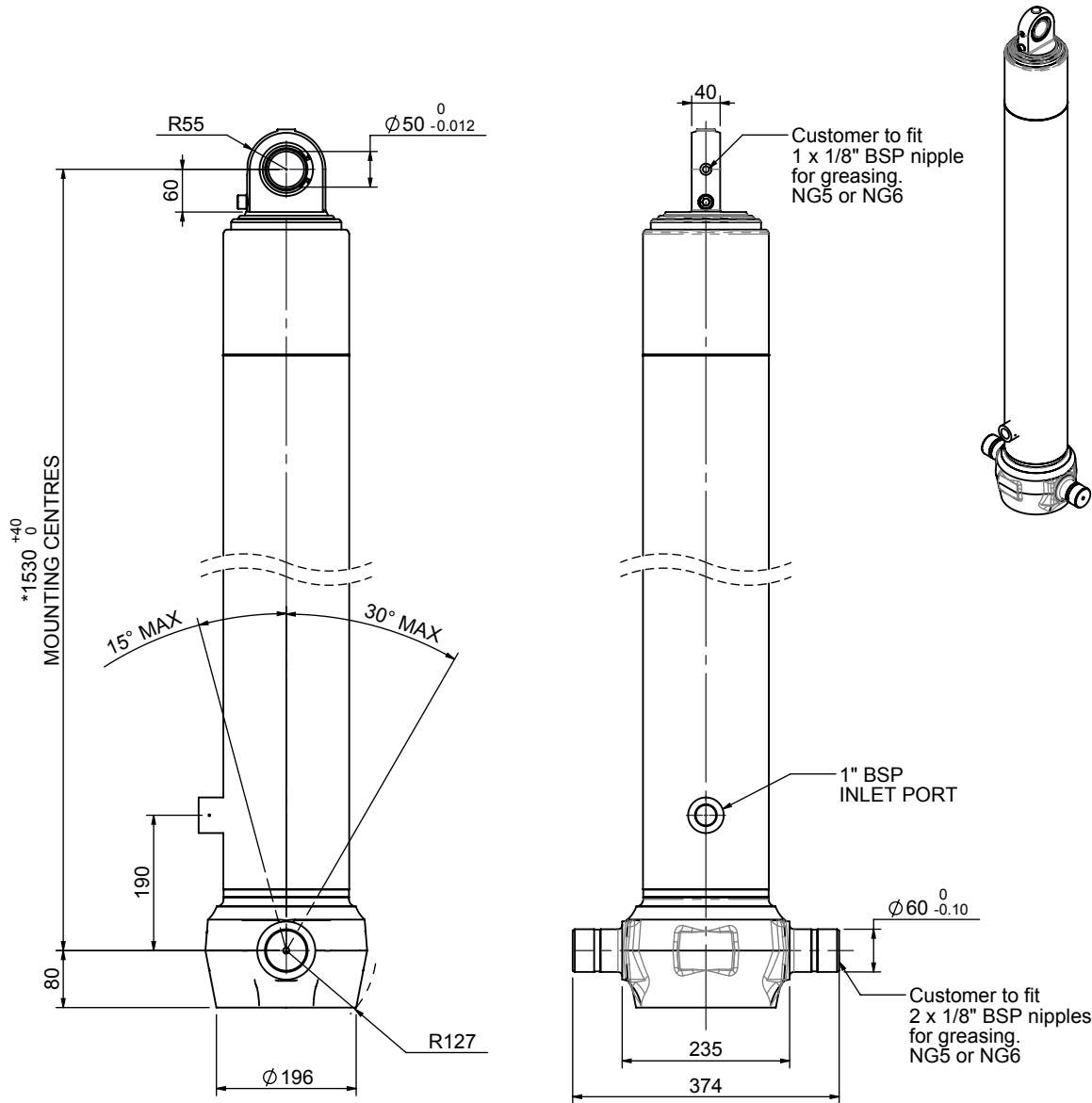


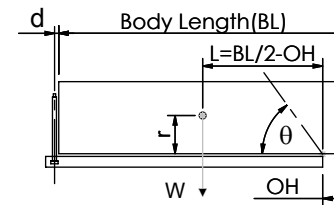
Cylinder 3 stage front end with spherical eye



CS150S33889B19A01

SPECIFICATION		TIPPING CAPACITY : 35-51 TONNES***		
Stage	Diameter	Length	Stroke	Swept Volume
-	-	-	-	-
-	-	-	-	-
-	-	-	-	-
0	177	1525	-	-
1	155	1490	1277	24
2	136	1490	1297	19
3	117	1490	1312	14
Total (+5/-10)			3886	57
Final stroke reduced by	0	Priming Volume		14.3
Cylinder Mass (Kg)	153	Total Volume (Litres)		71.3
Maximum Pressure (Bar)	190	Max. first stage thrust		230 KN

***TIPPING CAPACITY AT WORKING PRESSURE



BODY LENGTH (BL)						OH
5300		5550		5800		
38	45°	36	43°	35	41°	150
43	49°	41	46°	39	44°	450
51	52°	48	49°	45	46°	750

$d = 0$; $r = 750$; Working Pressure 125 bar

For guidance only;

Higher working pressures and tipping capacities may be possible.

To check your application email - applications@edbro.co.uk

NOTES

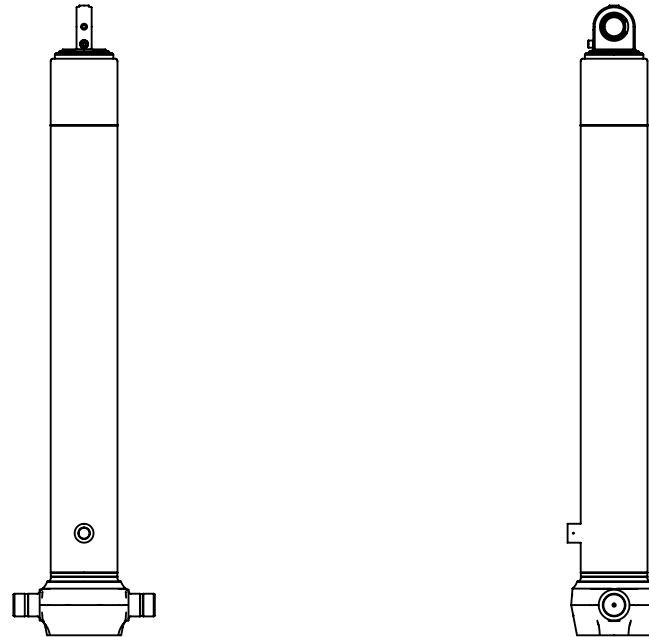
1. This cylinder is for lifting purposes only and side load conditions should be avoided
2. Cylinder is painted in primer paint to RAL5013
3. Refer to www.edbro.com for:-
 - Bracket details
 - Installation instructions that must be observed
 - Correct oil selection
 - An explanation of tipping capacity

*Includes 9mm Pull Out. Last Stage Chrome Plated

Edbro
SETTING THE INDUSTRY STANDARD

Edbro plc
Nelson Street, Bolton, England, BL3 2JJ
Tel +44 (0) 1204 528888 Fax +44 (0) 1204 531957
Email: postmaster@edbro.com Web: www.edbro.com

Technical Specifications are subject to change without notice
Date Created/Updated: 19 July 2012
Refer www.edbro.com to confirm latest specification
All dimensions are in 'mm', unless otherwise stated



CS150S33889B19A01