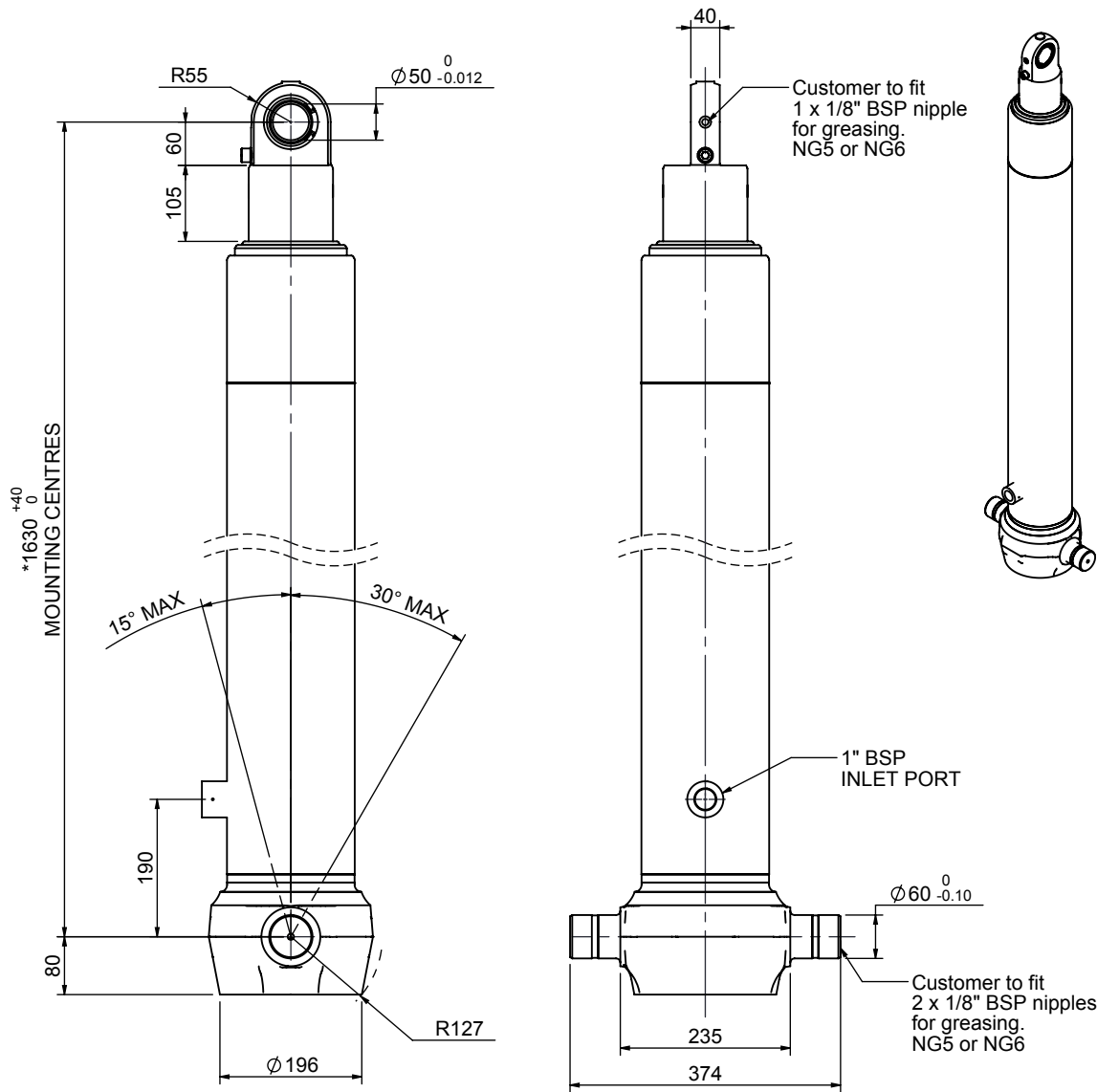


Cylinder 3 stage front end with spherical eye

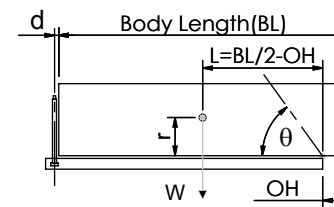


*Includes 9mm Pull Out. Last Stage Chrome Plated

CS150S33889B19A05

SPECIFICATION		TIPPING CAPACITY : 36-53 TONNES***		
Stage	Diameter	Length	Stroke	Swept Volume
-	-	-	-	-
-	-	-	-	-
-	-	-	-	-
0	177	1525	-	-
1	155	1490	1277	24
2	136	1490	1297	19
3	117	1590	1312	14
Total (+5/-10)			3886	57
Final stroke reduced by	0	Priming Volume		19
Cylinder Mass (Kg)	155	Total Volume (Litres)		76
Maximum Pressure (Bar)	190	Max. first stage thrust		230 KN

***TIPPING CAPACITY AT WORKING PRESSURE



BODY LENGTH (BL)					OH	
5200	5450	5700				
38	46°	37	44°	36	42°	150
44	50°	40	47°	40	44°	450
53	54°	49	50°	46	48°	750

d = 0; r = 750; Working Pressure 125 bar

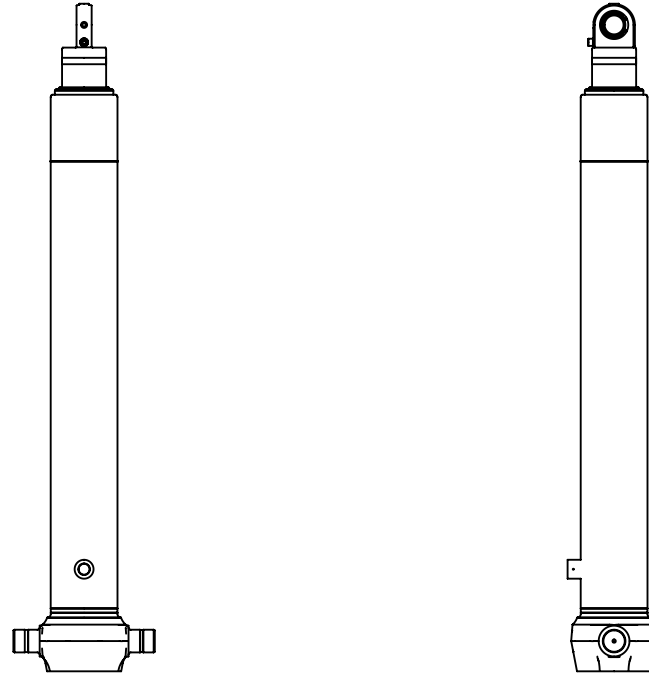
For guidance only;

Higher working pressures and tipping capacities may be possible.

To check your application email - applications@edbro.co.uk

NOTES

1. This cylinder is for lifting purposes only and side load conditions should be avoided
2. Cylinder is painted in primer paint to RAL5013
3. Refer to www.edbro.com for:-
 - Bracket details
 - Installation instructions that must be observed
 - Correct oil selection
 - An explanation of tipping capacity



CS150S33889B19A05