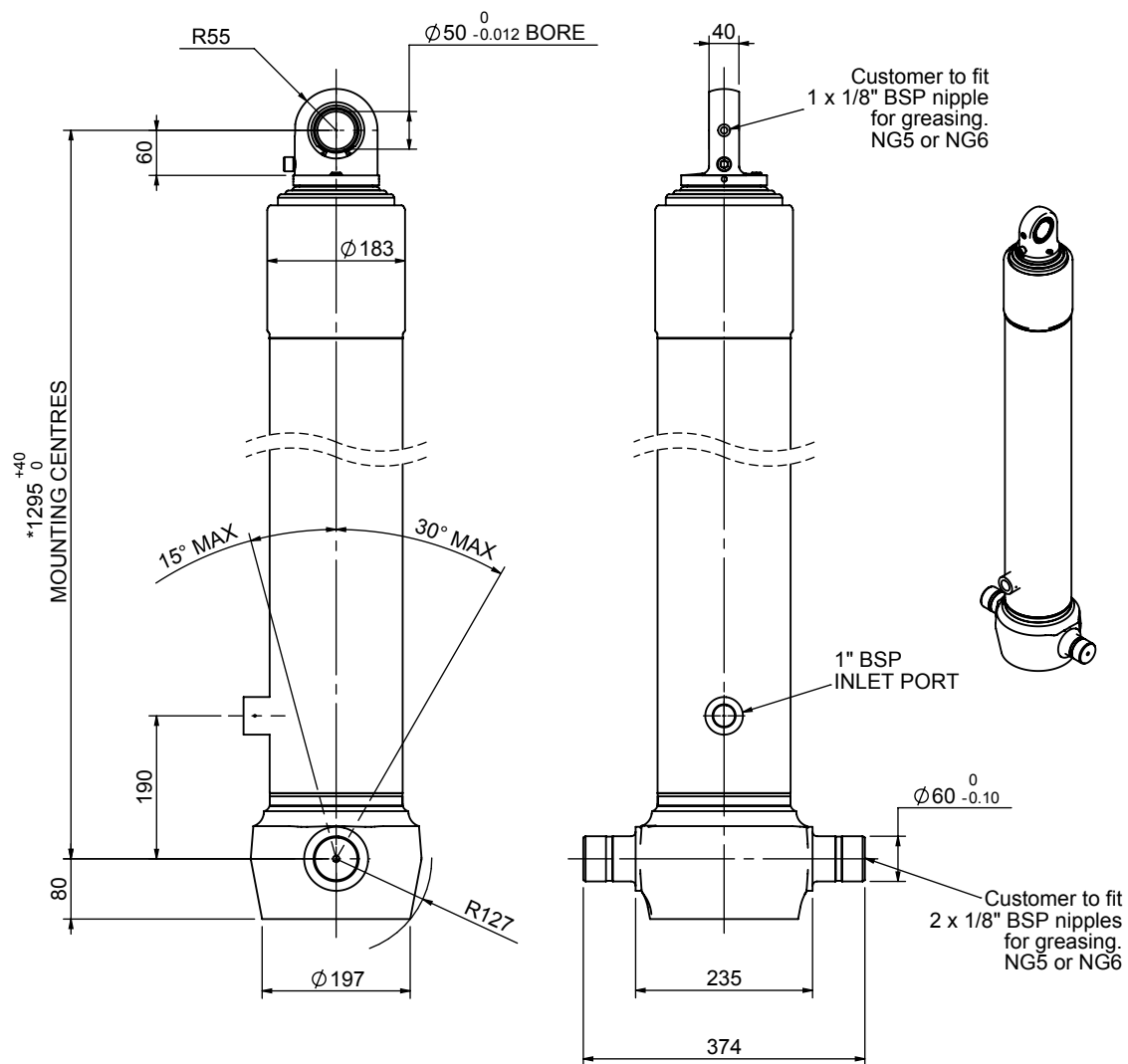


# Cylinder 4 stage front end with spherical eye



\*Includes 9mm Pull Out.  
Last Stage Chrome Plated

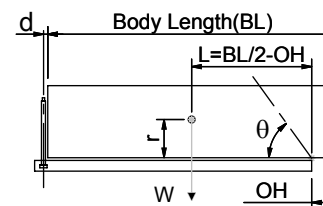


**Edbro plc**  
Nelson Street, Bolton, England, BL3 2JJ  
Tel +44 (0) 1204 528888 Fax +44 (0) 1204 531957  
Email: postmaster@edbro.com Web: www.edbro.com

# CS150S44206B19A01

SPECIFICATION		TIPPING CAPACITY : 35-54 TONNES***		
Stage	Diameter	Length	Stroke	Swept Volume
-	-	-	-	-
-	-	-	-	-
0	177	1275	-	-
1	155	1240	1027	19
2	136	1240	1047	15
3	117	1240	1062	11
4	98	1240	1067	8
Total (+5/-10)			4203	53
Final stroke reduced by	0	Priming Volume		14
Cylinder Mass (Kg)	152	Total Volume (Litres)		67
Maximum Pressure (Bar)	190	Max. first stage thrust		225 KN

## \*\*\*TIPPING CAPACITY AT WORKING PRESSURE



BODY LENGTH (BL)						OH
5500		5750		6000		
38	47°	36	45°	35	43°	150
44	50°	41	48°	39	45°	450
54	54°	49	51°	46	48°	750

d = 0; r = 750; Working Pressure 165 bar

### For guidance only;

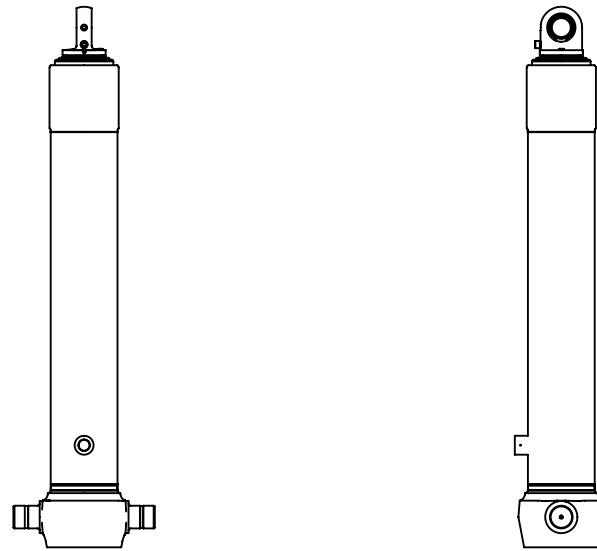
Higher working pressures and tipping capacities may be possible.

To check your application email - [applications@edbro.co.uk](mailto:applications@edbro.co.uk)

## NOTES

1. This cylinder is for lifting purposes only and side load conditions should be avoided
2. Cylinder is painted in primer paint to RAL5013
3. Refer to [www.edbro.com](http://www.edbro.com) for:-
  - Bracket details
  - Installation instructions that must be observed
  - Correct oil selection
  - An explanation of tipping capacity

Technical Specifications are subject to change without notice  
Date Created/Updated: 04 September 2012  
Refer [www.edbro.com](http://www.edbro.com) to confirm latest specification  
All dimensions are in 'mm', unless otherwise stated



CS150S44206B19A01